

Electric Supply & Delivery in Illinois

Businesses choosing to locate and expand in Illinois will find a state with abundant, diverse sources of energy and the ability to choose among suppliers.

In an effort to promote competition among electric power suppliers, Illinois lawmakers approved the Electric Service Customer Choice and Rate Relief Law of 1997. As a result, today's commercial or industrial customer can choose from a number of retail energy suppliers, and the market continues to develop. Whether you choose Ameren or another company to provide your electric power supply, our Illinois utilities — AmerenCILCO, AmerenCIPS and AmerenIP — are responsible for delivering safe, reliable electricity and natural gas to your business.

Ameren's Illinois utilities encourage customers to seek the options that best meet their electric needs. To assist in

this process, we have prepared this service proposal to help you better understand Illinois' energy environment and the prices Ameren Illinois utilities can offer.

As energy delivery companies, Ameren's Illinois utilities are proud to serve our customers and promote development in the communities we serve. We are eager to be part of your business success in Illinois.

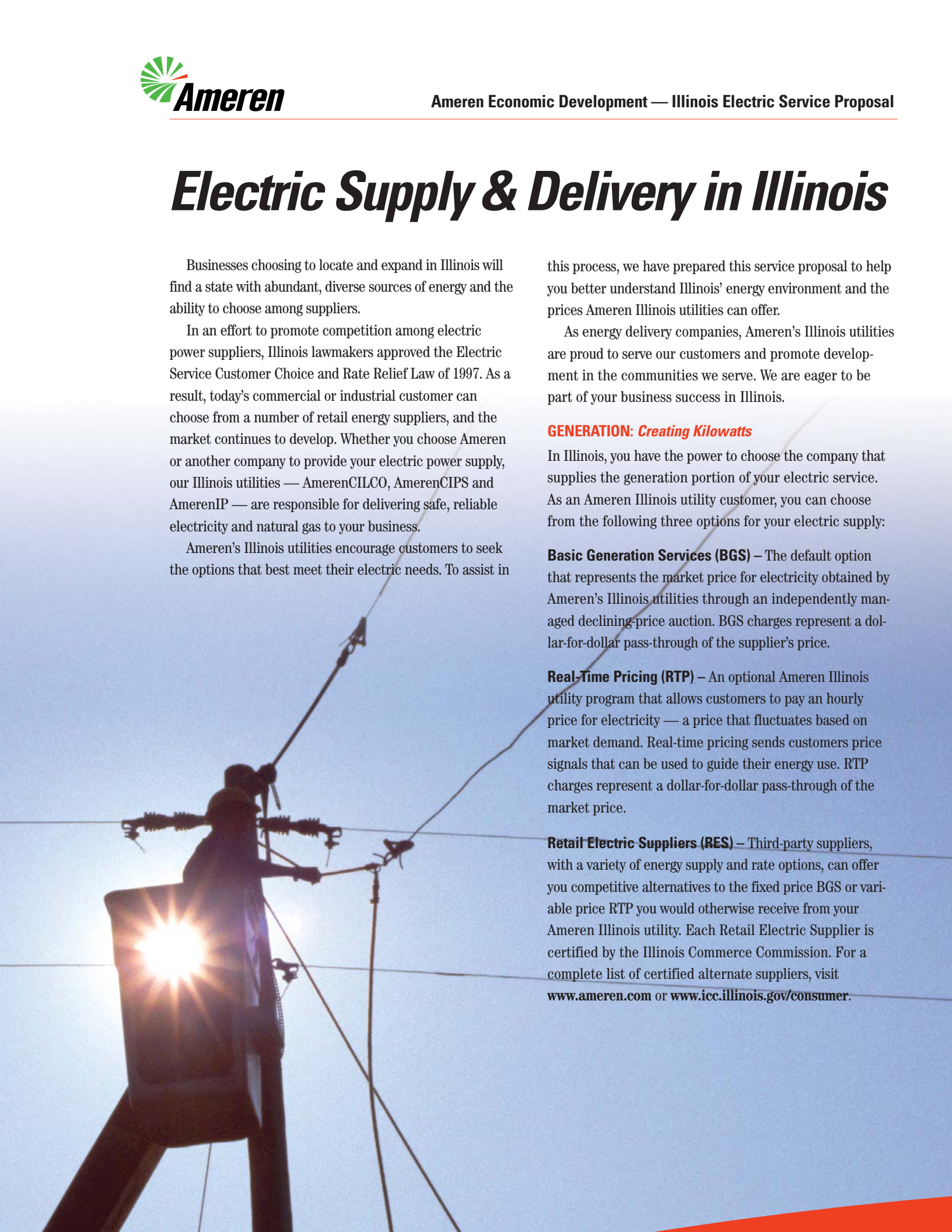
GENERATION: *Creating Kilowatts*

In Illinois, you have the power to choose the company that supplies the generation portion of your electric service. As an Ameren Illinois utility customer, you can choose from the following three options for your electric supply:

Basic Generation Services (BGS) – The default option that represents the market price for electricity obtained by Ameren's Illinois utilities through an independently managed declining-price auction. BGS charges represent a dollar-for-dollar pass-through of the supplier's price.

Real-Time Pricing (RTP) – An optional Ameren Illinois utility program that allows customers to pay an hourly price for electricity — a price that fluctuates based on market demand. Real-time pricing sends customers price signals that can be used to guide their energy use. RTP charges represent a dollar-for-dollar pass-through of the market price.

Retail Electric Suppliers (RES) – Third-party suppliers, with a variety of energy supply and rate options, can offer you competitive alternatives to the fixed price BGS or variable price RTP you would otherwise receive from your Ameren Illinois utility. Each Retail Electric Supplier is certified by the Illinois Commerce Commission. For a complete list of certified alternate suppliers, visit www.ameren.com or www.icc.illinois.gov/consumer.





TRANSMISSION SERVICE:

Carrying Kilowatts Closer to Customers

Transmission service is the process that transmits high-voltage energy from its source to a distribution system near your location. Depending on your choice of electric supplier, transmission charges are collected either by the RES or by your Ameren Illinois utility.

Ameren's transmission system is robust, with more than 7,300 circuit miles of high-voltage transmission lines in Illinois and Missouri. Since 2000, Ameren's transmission-owning companies have invested more than \$255 million in transmission system improvements, and will invest another \$340 million over the next five years.

In addition, all of Ameren's transmission-owning companies are members of the non-profit Midwest Independent Transmission System Operator, known as "MISO". Independent System Operators (ISOs), like MISO, ensure reliability and equal access to energy providers throughout the nation's transmission grid. MISO is the nation's geographically largest ISO, controlling some 94,000 miles of interconnected transmission lines in 15 U.S. states and the Canadian province of Manitoba.

DELIVERY SERVICES:

Distributing Kilowatts For Customer Consumption

Delivery services represent the systems and services that deliver energy directly to your business. Electric delivery charges are established by the Illinois Commerce Commission and will generally account for about one-third of the total electric costs on your monthly bill. Delivery service charges allow AmerenCILCO, AmerenCIPS and AmerenIP to build, maintain and improve the system that serves you, and respond around the clock to restore service when it is interrupted. Regardless of your choice for electric supply, Ameren's Illinois utilities will continue as the delivery companies for customers in their service territories.

ELECTRICITY IN ILLINOIS:

Benefits for Commercial & Industrial Customers

- Abundant energy supply and diverse sources of energy contribute to competitive rates.
- Because the regulatory environment encourages competition at the supplier level, in Illinois a wide variety of energy supply and pricing options are available to match your business' unique load profile.
- You can count on the same safe, reliable energy delivery throughout Ameren Illinois' widespread service territory – regardless of what company you choose to supply your electricity.

AT YOUR SERVICE

Ameren offers economic development services as part of our commitment to the growth and prosperity of the communities we serve. For further information about this proposal, contact Ameren's Economic Development group at **1.800.981.9409**.



*Development fuels the community.
We fuel the development.*