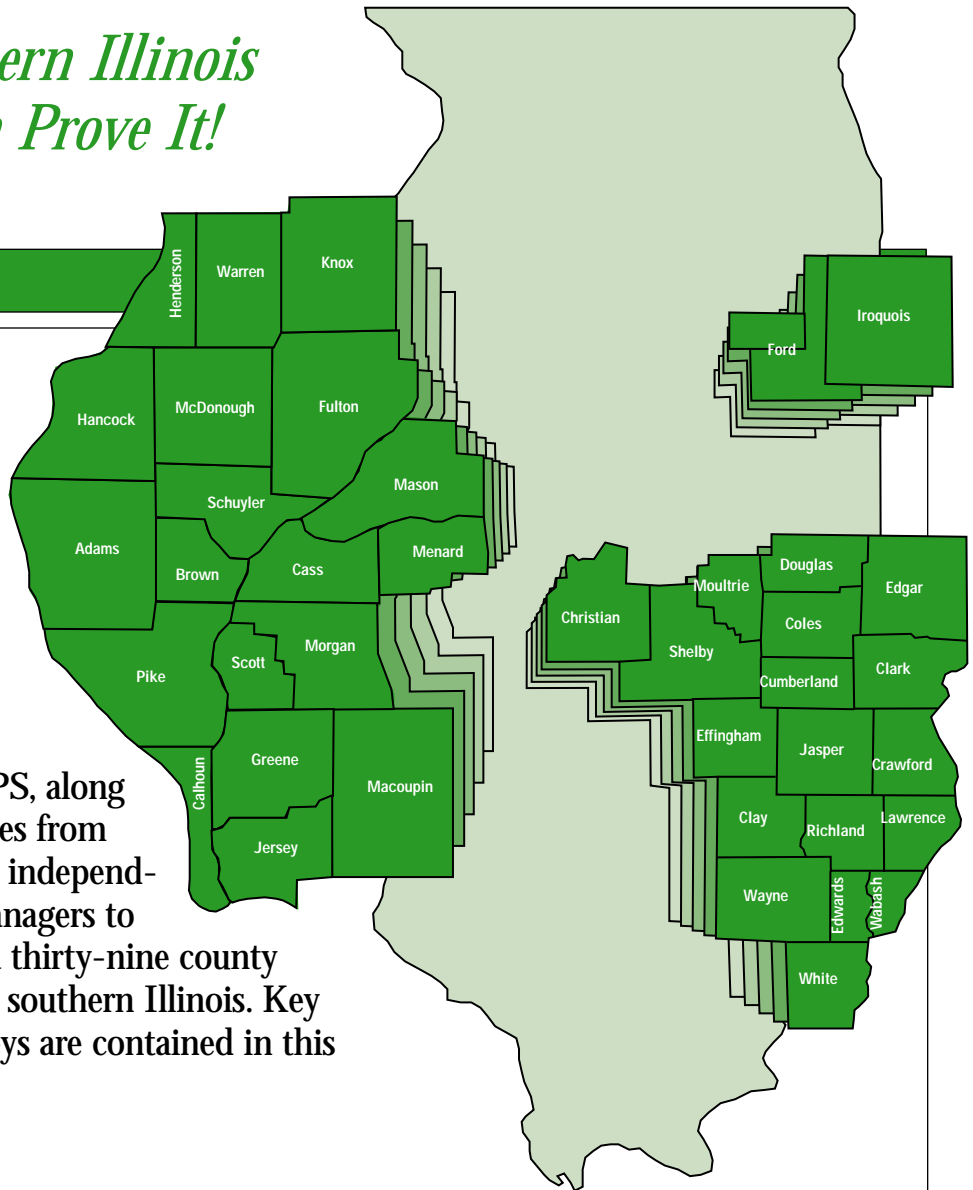


Quality Workforce

*Central & Southern Illinois
Has It and Can Prove It!*

Labor quality is an important consideration in the site selection process. An area's workforce and its skills will ultimately determine your company's ability to respond to competitive opportunities and contribute to the "bottom line."

With this in mind, AmerenCIPS, along with development representatives from the regions, commissioned four independent surveys of local business managers to determine the labor quality of a thirty-nine county combined region in central and southern Illinois. Key composite results of these surveys are contained in this brochure.



FOR A COMPLETE COPY OF THE SURVEY RESULTS . . .

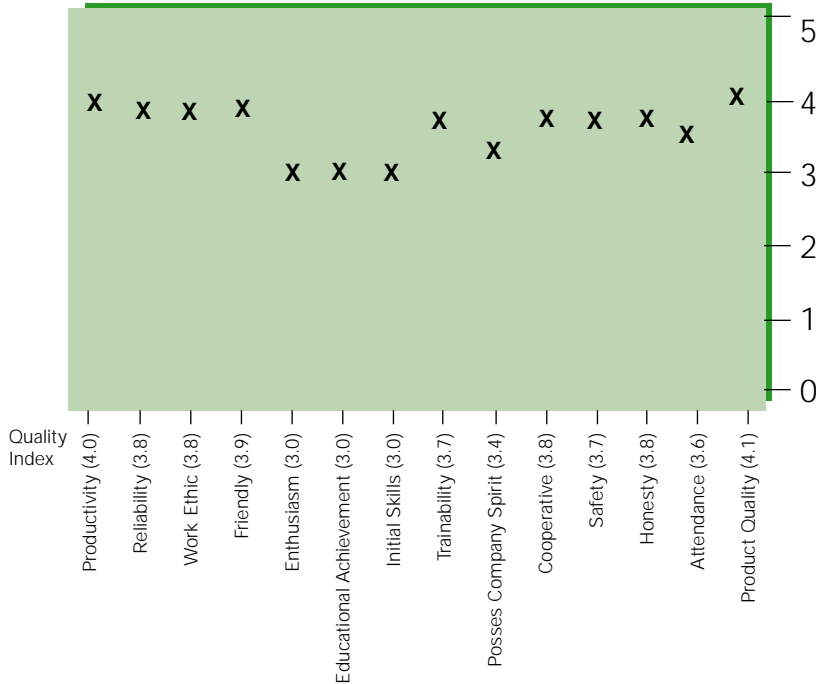
Contact: **The Economic Development Team**

P .O. Box 66149, MC 350
St. Louis, MO 63166-6149
Toll-Free: 800-981-9409
<http://www.ameren.com/ed>



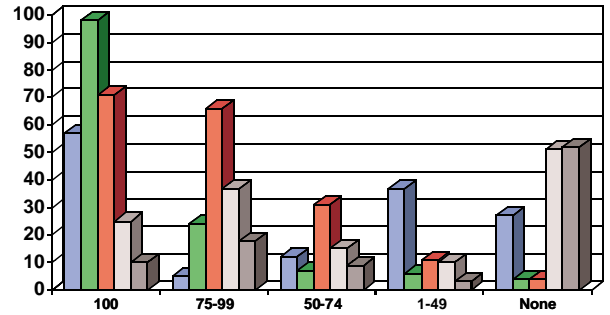
LABOR QUALITY CHARACTERISTICS

(scale 0-5: 5 is excellent)



Key Points: Productive, honest, friendly workforce with special recognition for product quality.

EMPLOYER BENEFITS PLANS



Key Points:

Service area employers offer competitive benefit packages costing less than the national average



QUALITY OF LABOR CHARACTERISTICS

Quality Characteristic	Range	*2000 Average	*96 Result	Difference
Product Quality	4.0 — 4.2	4.1	3.9	+2
Productivity	3.9 — 4.2	4.0	4.0	+2
Friendly	3.8 — 4.0	3.9	3.9	N/C
Cooperative	3.7 — 3.9	3.8	3.5	+3
Reliability	3.7 — 3.9	3.8	3.7	+1
Work Ethic	3.7 — 3.9	3.8	3.4	+4
Honesty	3.6 — 4.0	3.8	3.8	N/C
Trainability	3.7 — 3.8	3.7	3.5	+2
Safety	3.5 — 4.0	3.7	3.5	+2
Attendance	3.3 — 3.8	3.6	3.5	+1
Possess Company Spirit	3.2 — 3.7	3.4	3.0	+4
Enthusiasm	3.2 — 3.5	3.3	3.0	+3
Educational Achievement	3.0 — 3.3	3.0	2.8	+2
Initial Skills	2.9 — 3.4	3.0	2.8	+2

*Denotes non-weighted averages

Key Points: Quality characteristic scores are increasing. Top three worker characteristic are productivity, product quality and friendliness.