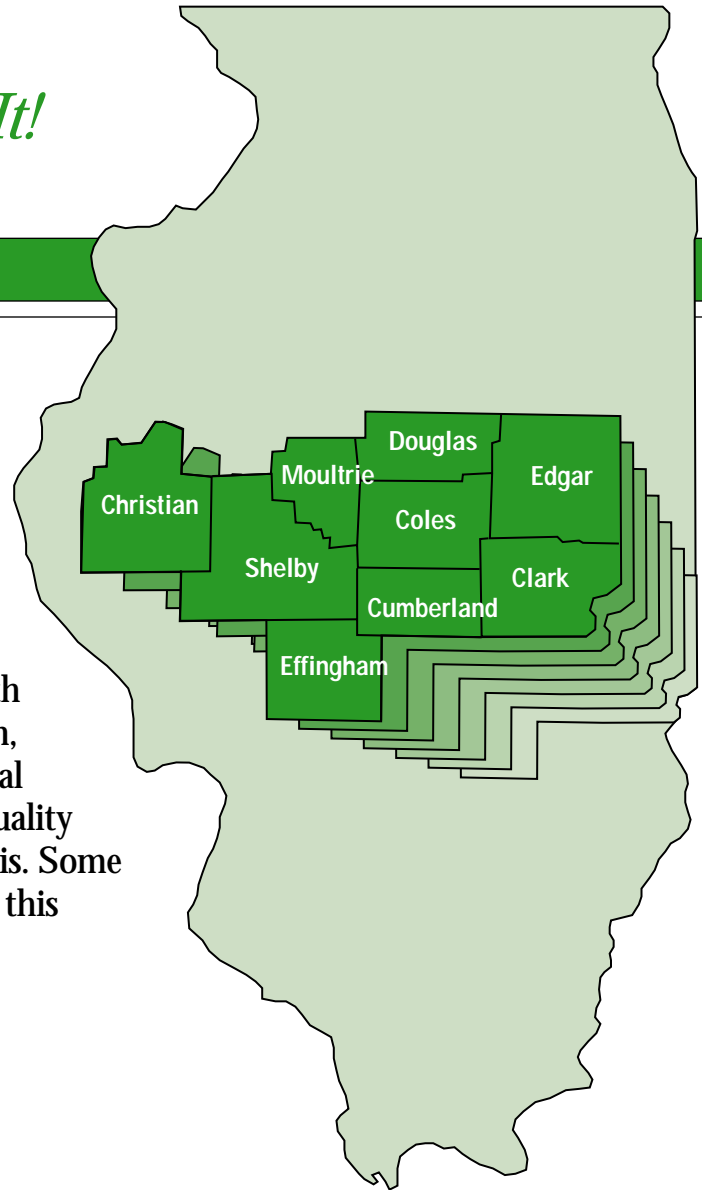


Quality Workforce

*East Central Illinois
Has It and Can Prove It!*

Labor quality is an important consideration in the site selection process. An area's workforce and its skills will ultimately determine your company's ability to respond to competitive opportunities and contribute to the "bottom line."

With this in mind, AmerenCIPS, along with development representatives from the region, commissioned an independent survey of local business managers to determine the labor quality of a nine county region in east central Illinois. Some of the results of this survey are contained in this brochure.



FOR A COMPLETE COPY OF THE SURVEY RESULTS . . .

Contact: **The Economic Development Team**

P .O. Box 66149, MC 350

St. Louis, MO 63166-6149

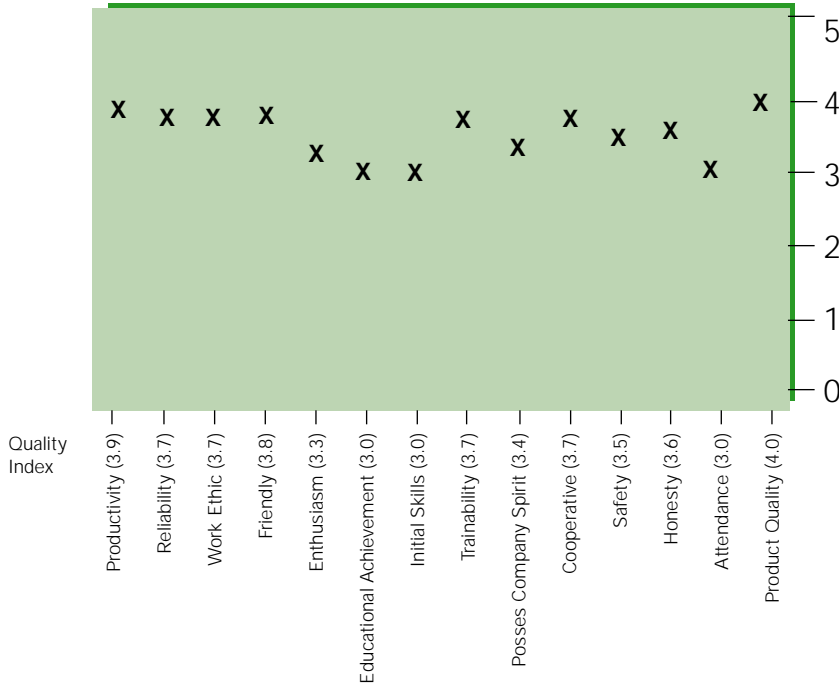
Toll-Free: 800-981-9409

<http://www.ameren.com/ed>



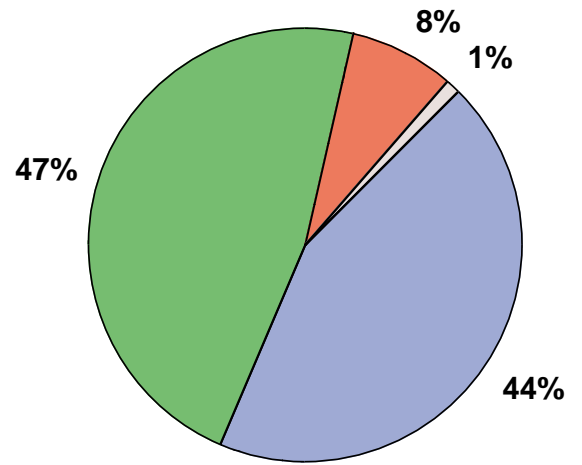
LABOR QUALITY CHARACTERISTICS

(scale 0-5: 5 is excellent)



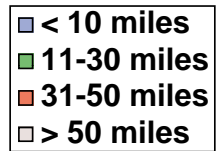
Key Points: Productive, honest, friendly workforce with special recognition for product quality.

COMMUTING DISTANCES

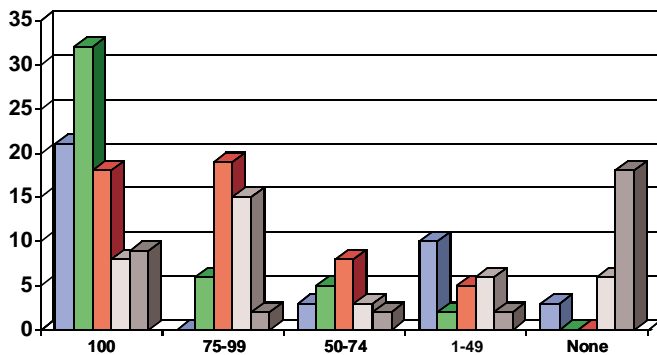


Key Points:

A large workforce will commute between 10-30 miles for employment positions.



EMPLOYER BENEFIT PLANS



Key Points:

- Seventy-five percent (75%) of employers provide Pension Plan benefits
- A salary reduction plan (401K) is offered by 96% of the employers
- Employees are provided an average of 9.7 paid holidays per year
- Thirty three percent (33%) of employers provide group life insurance.



AVERAGE HOURLY WAGE BY TITLE

Occupation	Average Hourly Wage	Range
Fork Lift Operator	\$10.91	\$7.50 - 17.95
Maintance Mechanic	\$14.44	\$9.50 - 19.92
Assembler	\$10.19	\$7.00 - 14.40
Machine Operator	\$12.52	\$9.00 - 19.92
Laborer	\$10.11	\$6.50 - 17.95
Secretary	\$ 9.40	\$7.50 - 13.25
Computer Operator	\$11.41	\$9.50 - 20.00
Clerk	\$ 9.27	\$7.00 - 16.50

Source: Local Survey

Key Points: AmerenCIPS area workforce is wage competitive with the rest of the country