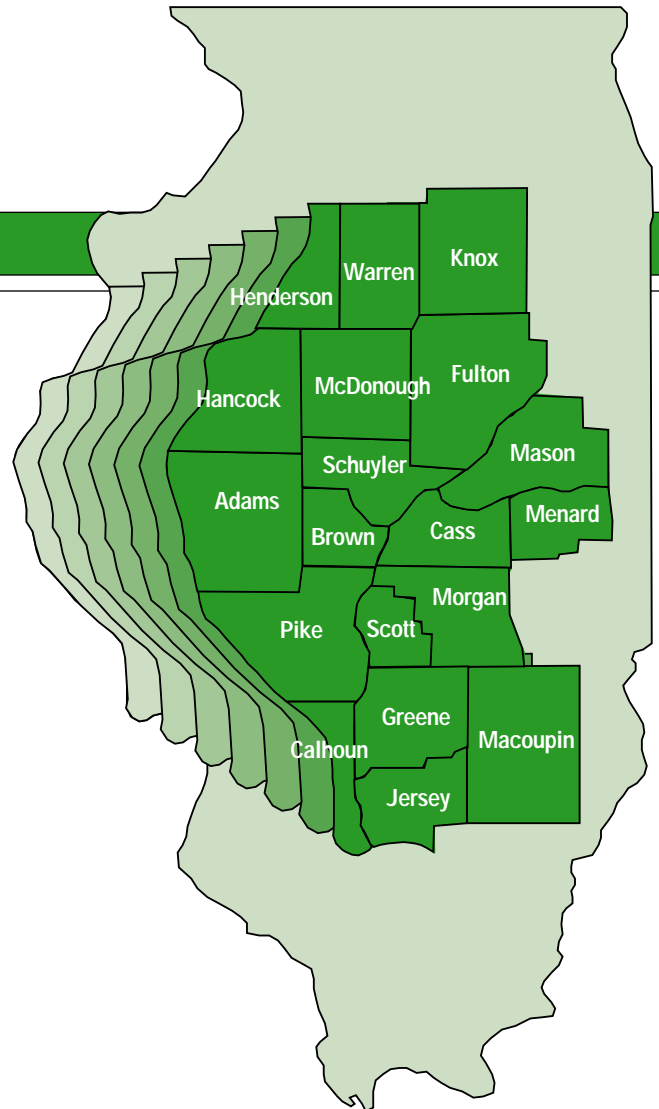


Quality Workforce

*West Central Illinois
Has It and Can Prove It!*

Labor quality is an important consideration in the site selection process. An area's workforce and its skills will ultimately determine your company's ability to respond to competitive opportunities and contribute to the "bottom line."

With this in mind, AmerenCIPS, along with development representatives from the region, commissioned an independent survey of local business managers to determine the labor quality of a nineteen county region in west central Illinois. Some of the results of this survey are contained in this brochure.



FOR A COMPLETE COPY OF THE SURVEY RESULTS . . .

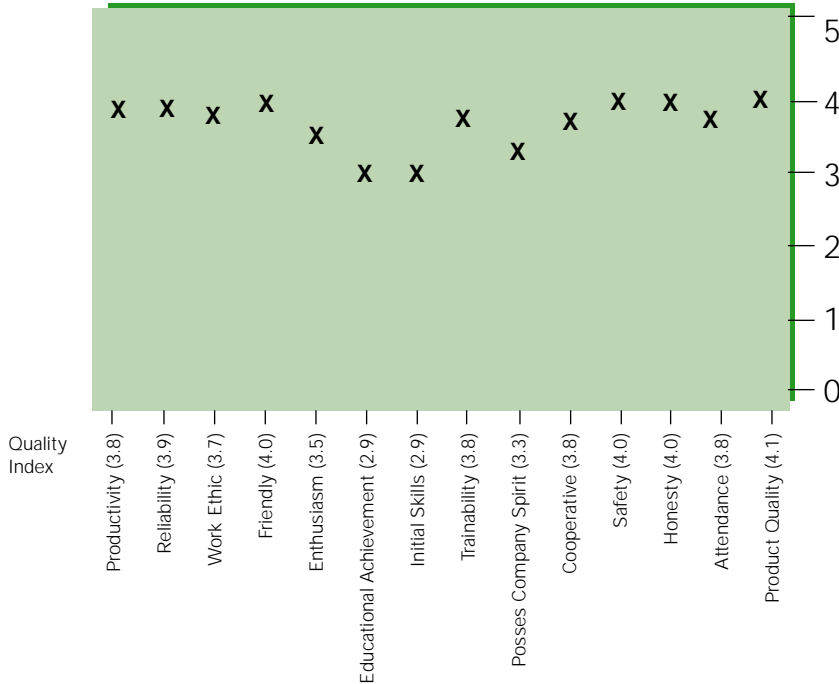
Contact: **The Economic Development Team**

P .O. Box 66149, MC 350
St. Louis, MO 63166-6149
Toll-Free: 800-981-9409
<http://www.ameren.com/ed>



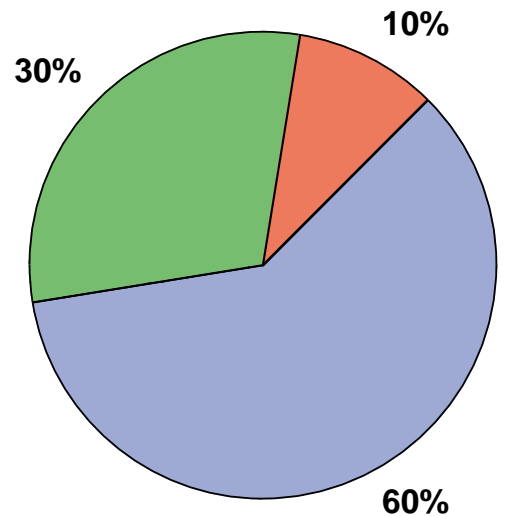
LABOR QUALITY CHARACTERISTICS

(scale 0-5: 5 is excellent)



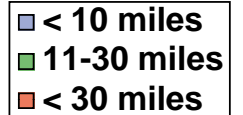
Key Points: Productive, reliable, honest, friendly workforce with special recognition for product quality.

COMMUTING DISTANCES

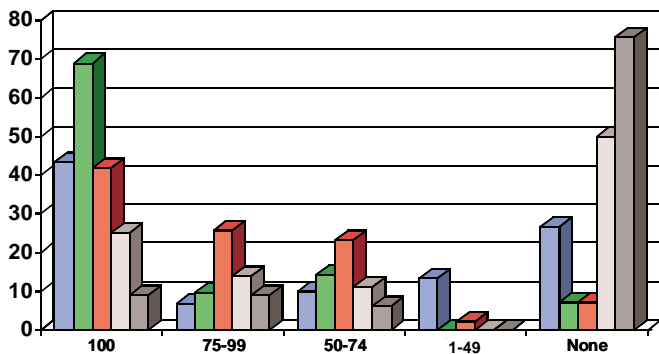


Key Points:

A large workforce will commute between 10-30 miles for employment positions.



EMPLOYER BENEFIT PLANS



Key Points:

- 93% of employers provide health insurance
- 78% of employers provide group life insurance
- A salary reduction plan (401K) is offered by 56% of the employers
- Employees are provided an average of 8.4 paid holidays per year

MORE QUALITY OF LABOR RESULTS

- Estimated average dollar contribution, as a percent of wages, is 22% that compares well to 33 to 40 percent national average.
- Quality workforce characteristics are rated higher than previous study in 1996.
- Average hourly production wage is \$10.11 with second shift differential of \$0.21 and \$0.24 for third shift.
- Average length of employment is 12 years.
- Study shows regional workforce meeting or exceeding expectations of manufacturing employers.
- The average number of years employer at present location is 23 years.