

### AmerenIP Electric Rates for Company-Owned Area or Directional Lighting

(effective Jan. 2, 2007)

The following fixture charges include the luminaire, the bracket for overhead lighting only (30 inches for protective lighting; six-foot bracket for street lighting), photoelectric cell, bulb, miscellaneous wire and connections, mounted on an existing company-owned distribution-type wood pole or standard. The estimated variable charges include the Distribution Delivery Charge, Power and Energy Charge and Transmission Service Charge.

Type of Luminaire	Lamp Wattage	Lumen Output	Monthly Fixture Charges	Estimated Monthly Variable Charges*	Estimated Total Monthly Charges**
Area Lighting	100 HPS	9,800	\$7.59	\$3.04	\$10.63
	250 HPS	29,000	\$8.66	\$7.23	\$15.89
	400 HPS	50,000	\$8.97	\$11.33	\$20.30
	250 MH	22,000	\$10.92	\$7.09	\$18.01
	400 MH	36,000	\$10.92	\$10.85	\$21.77
Directional Lighting	250 HPS	29,000	\$9.18	\$7.23	\$16.41
	400 HPS	50,000	\$9.25	\$11.33	\$20.58
	250 MH	22,000	\$11.25	\$7.09	\$18.34
	400 MH	36,000	\$11.25	\$10.85	\$22.10

\* Average cost based on monthly kWh consumption of fixture.

\*\* Plus all other applicable charges

### AmerenIP Decorative Lighting Fixture

Our freestanding, post-top, Early American-style decorative lighting is shown below. Its overall height is approximately 14 feet on a tapered pole.



Early American

The following fixture charges include the standard ornamental luminaire, photoelectric cell, bulb, miscellaneous wire and connections, and 17-foot (14-foot when mounted) black fiberglass pole. The estimated variable charges include the Distribution Delivery Charge, Power and Energy Charge and Transmission Service Charge. All post-top luminaires require underground wiring (the cost of which is not included in the rates noted below).

### AmerenIP Electric Rates for Company-Owned Decorative Lighting

(effective Jan. 2, 2007)

Type of Luminaire	Lamp Wattage	Lumen Output	Monthly Fixture Charges	Estimated Monthly Variable Charges*	Estimated Total Monthly Charges**
Sodium Vapor	100 HPS	9,800	\$14.10	\$3.04	\$17.14
Metal Halide	175 MH	14,400	\$18.57	\$4.97	\$23.54

\* Average cost based on monthly kWh consumption of fixture.

\*\* Plus all other applicable charges

### Additional Charges

Excess facilities charges will apply if additional or non-standard facilities or labor are required (e.g., poles, transformers, conductor, trenching or boring, guying, etc.) to install your lighting. And customers who ask AmerenIP to install a new company-owned pole will be charged applicable excess facilities charges.

### Typical Charges for Lighting Service Excess Facilities

Conductor installed overhead	\$ 5.00/ft.
Cable pulling in customer installed conduit	\$ 9.50/ft.
Conductor installed with new trench	\$ 13.00/ft.
6-foot protective light bracket (instead of 30-inch bracket)	\$ 85.00
Conversion from overhead to underground	\$ 600.00
15-foot street light bracket (instead of 6-foot bracket)	\$ 700.00
Down guy installed with anchor	\$1,100.00
30-foot wood pole with clevis	\$2,000.00
35-foot wood pole with clevis	\$2,200.00
40-foot wood pole with clevis	\$2,450.00
Transformer dedicated for customer lighting	\$2,500.00
30-foot fiberglass pole, gray	\$2,900.00
33-foot fiberglass pole, gray	\$4,000.00
38-foot fiberglass pole, gray	\$5,700.00

Other charges may apply depending upon circumstances specific to the job.

**All standard charges are subject to periodic review and revision.**

For detailed rate information, please visit our Web site. All utility rates are reviewed and approved by the Illinois Commerce Commission ([www.icc.illinois.gov](http://www.icc.illinois.gov)).

# 2007-2008 Outdoor Lighting Service



The electric rates you pay every month are made up of several components, outlined in detail in the regulatory filings posted at our Web site: [www.ameren.com](http://www.ameren.com). For a quick reference, this brochure provides a high-level overview of the electric rates for outdoor lighting service.

### Lighting Service Availability

AmerenIP lighting service is available to any customer for lighting outdoor areas and to any city, village, town, unincorporated community or subdivision for lighting of public roads, streets, alleys, walkways and public parking lots.

#### Lighting service is only available where:

- Lighting is controlled by a photoelectric cell (automatically turns “on” at dusk and “off” at dawn);
- The period of lighting is continuous from dusk to dawn;
- Lighting service is located within AmerenIP service territory;
- AmerenIP has truck access to lighting facilities; and
- The customer agrees to receive lighting service using a company-owned lighting fixture for a minimum term of two years.

### Our Responsibilities

As your electric delivery company, AmerenIP will:

- Furnish, install and maintain company-owned lighting facilities.
- Determine what charges may apply and provide an estimate.
- Call JULIE prior to installation at 1-800-892-0123.
- Bill you monthly for your lighting service.

### Your Responsibilities

As an AmerenIP customer, it is your responsibility to call us regarding your new lighting service at the appropriate number below:

**AmerenIP** ..... **1-800-892-7715**

Following your initial contact, an AmerenIP representative will contact you regarding a suitable location for your outdoor lighting service. It is important to follow these guidelines as you get started:

- Lighting facilities must be permanently accessible to the company by bucket truck.
- The customer is responsible for securing all required permits and inspections.
- The customer is responsible for all clearing and grading and the costs of rights of ways or easements. The proposed lighting site must be free of construction materials, debris and spoil, and be

within six inches of final grade before we will install the facilities.

- The customer is responsible for abiding by all applicable government lighting ordinances.
- The customer is responsible for reaching agreement with neighbors who may be impacted by the lighting facilities prior to the installation.
- The customer is responsible for locating and clearly marking all customer-owned underground facilities such as septic tanks and laterals, water and irrigation lines, gas lines, electric lines, etc. AmerenIP is not responsible for unmarked facilities.
- The customer is responsible for the care of company facilities located on his or her property.

### Monthly Charges

#### Fixed Charges:

- Fixture Charge (for **company**-owned lighting fixture only) or
- Customer Charge and Meter Charge (for **customer**-owned lighting fixture only)

#### Variable Charges

(based on kWh consumption of fixture):

- **Distribution Delivery Charge** – these charges cover our costs to construct, maintain and improve the

distribution system, and provide the employees and services that keep the power flowing.

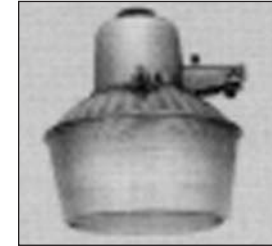
- **Power and Energy Charge** – these are your electric supply, or generation, costs – the costs of producing electricity at a power plant. As an energy delivery company, AmerenIP does not profit from the “power and energy charge” on your lighting bill; these charges are a dollar-for-dollar pass-through of the supplier’s price.
- **Transmission Service Charge** – these charges cover the costs of building and maintaining the high-voltage transmission towers and lines that bring electricity to delivery points near you.
- **Other charges** – these charges represent miscellaneous applicable charges such as taxes, etc.

#### Customer Choice

In Illinois, you have the power to choose the company that supplies the “power and energy” portion of your outdoor lighting service. For more information about your supply options, call AmerenIP at 1-800-755-5000 or visit [www.ameren.com](http://www.ameren.com) or [www.icc.illinois.gov/consumer](http://www.icc.illinois.gov/consumer).

### AmerenIP Area or Directional Lighting Fixtures

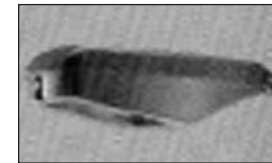
Our area or directional lighting fixtures, or luminaires, are available as shown below, for mounting to an existing company-owned pole.



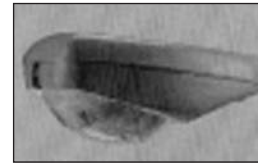
Open-Type Luminaire High Pressure Sodium (HPS)



Directional Luminaire HPS & MH



Enclosed Type - Cutoff Luminaire HPS & MH



Enclosed Type - Semi-Cutoff Luminaire HPS & Metal Halide (MH)