

Coffeen Power Station

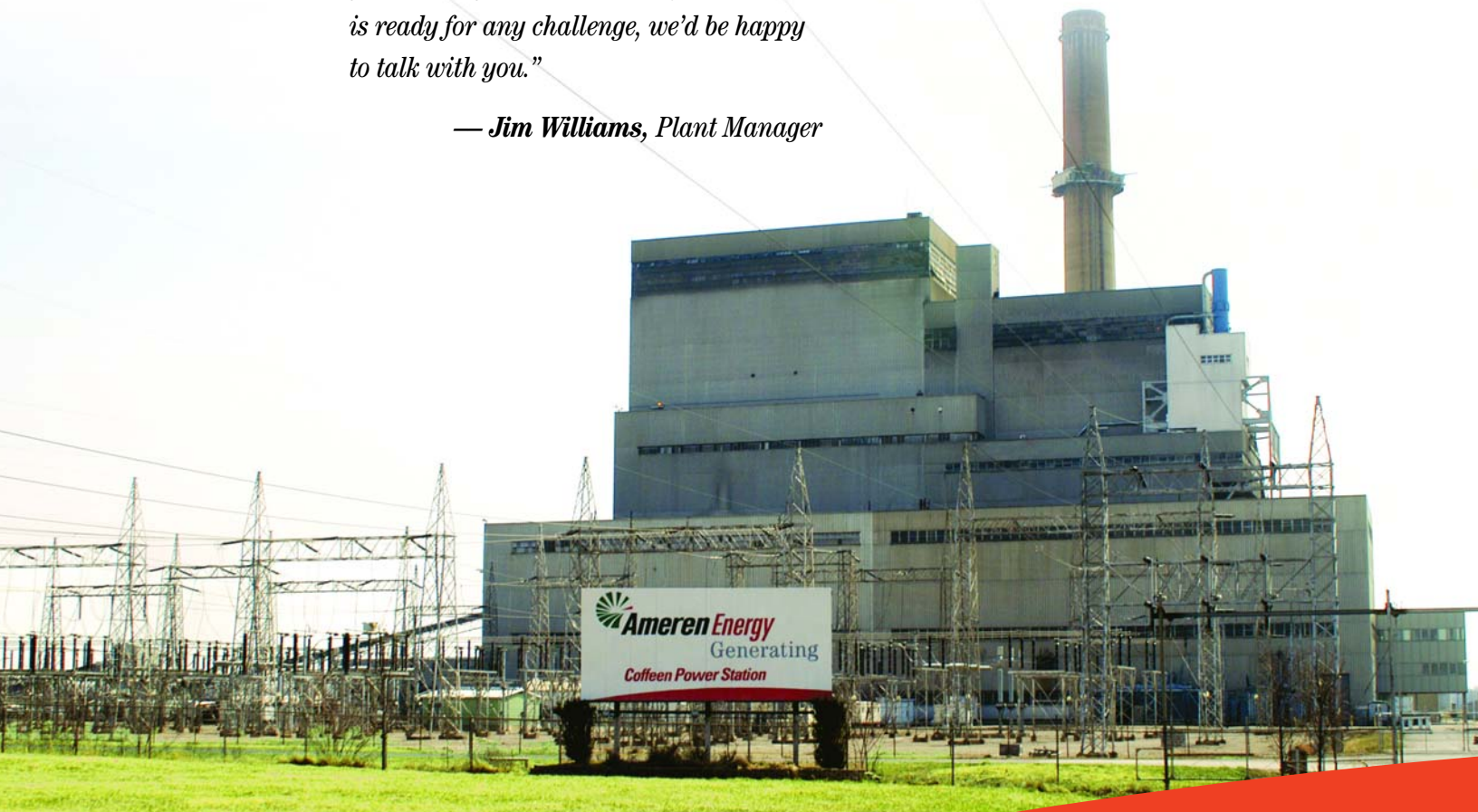


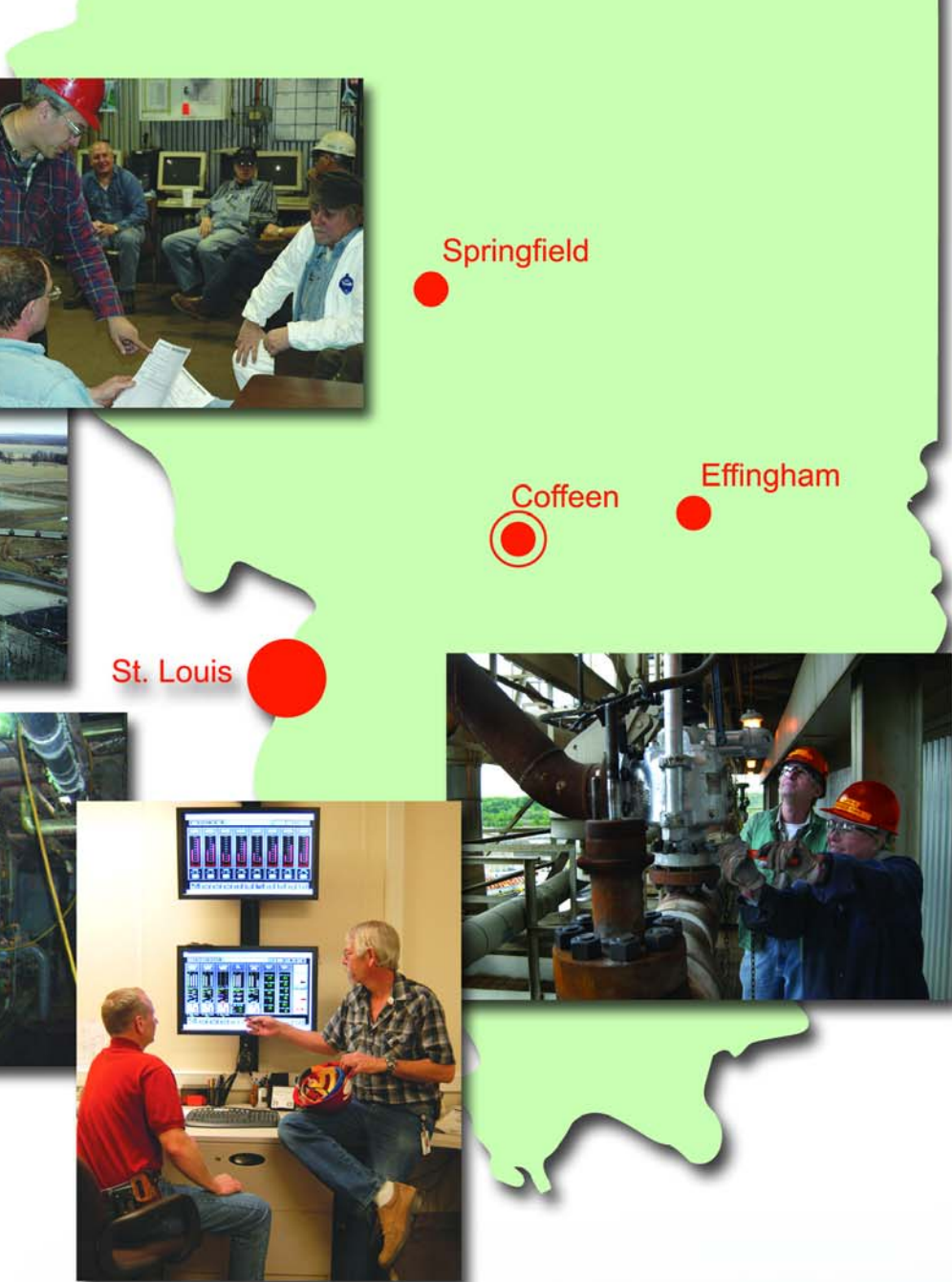
“At Coffeen Plant we like to think that there’s no job too big, no challenge too great, no obstacle we can’t overcome. Everyone here at Coffeen is determined to see this plant become one of the top performing coal-fired plants in the nation.

It’s something that permeates everything we do. We know that to be a top performer, we need to excel in the environmental, safety, and operational challenges we face every day. With every decision we make, we keep that goal in mind and we’re confident we’ll get there. If you’re ready to become part of a team that is ready for any challenge, we’d be happy to talk with you.”

— Jim Williams, Plant Manager

The 950-megawatt Coffeen Power Station has two B&W universal pressure once through cyclone-fired boilers, each mated to a General Electric turbine generator set. Unit 1 went into service in 1967 and produces 360 megawatts. Unit 2 came online in 1972 and produces 590 megawatts. Both units utilize overfire air and Selective Catalytic Reduction systems for NOx removal.





Springfield

Coffeen

Effingham

St. Louis

Location

Coffeen Power Station is located in Montgomery County, Ill., approximately two miles south of the city of Coffeen. The plant is built next to a 1,200 acre, man-made cooling water lake, which is managed by the Illinois Department of Natural Resources. Coffeen Lake is known for excellent bass, catfish, and crappie fishing.

Coffeen, IL is:

- 70 miles from St. Louis, MO
- 60 miles from Springfield, IL
- 20 miles from Vandalia, IL
- 20 miles from Litchfield, IL

Lifestyle

Coffeen and Montgomery County offer an excellent quality of life, including:

- Very affordable real estate in small town environment
- Year-round activities, from hunting, fishing and boating, to golfing, music festivals, and nature and wildlife preserves
- Close proximity to major universities and private colleges
- Convenient access to world class healthcare facilities

Links

To learn more about Coffeen and the surrounding area, visit:

- www.montgomeryco.com
- www.hillsboroillinois.net
- www.vandaliaillinois.com
- www.visit-springfieldillinois.com
- www.explorestlouis.com