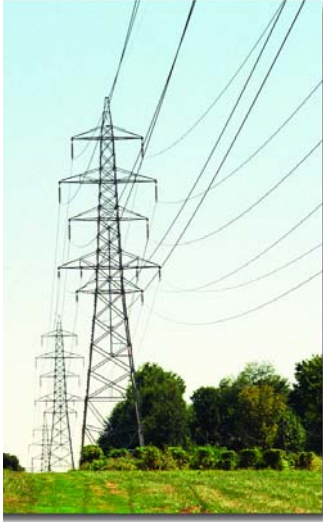


# Peoria Resource Center



**A**meren's Peoria Resource Center (PRC) provides integrated engineering support for the Edwards and Duck Creek power stations. PRC engineers work in partnership with plant engineers to achieve results through planning, multidisciplinary expertise and innovative solutions.

More than 30 professionals at the PRC work in flexible, cross-functional teams to analyze and solve a wide range of problems. PRC staff includes:

- Electrical engineers
- Environmental engineers
- Civil engineers
- Safety engineers
- Mechanical engineers
- Metallurgical engineers
- Chemical engineers
- Project managers
- Planners & schedulers

*The PRC provides:*

## Performance Services

State-of-the-art monitoring systems track and display thousands of real-time metrics from the power stations. PRC engineers perform sophisticated analyses to identify problems early and develop predictive maintenance procedures. They constantly explore and test new approaches to optimize plant performance.

## Project Design and Implementation

Working cooperatively with plant engineers, PRC engineers quickly assemble the right resources and expertise to research problems, develop solutions and manage projects efficiently. Key projects have run the gamut from replacing analog controls with digital systems to installing advanced high-efficiency turbines.



## Location

Peoria has a metropolitan area population of 350,000. It is located on the Illinois River, equal distance from Chicago and St. Louis.

## Peoria, IL is:

- 38 miles from Bloomington, IL
- 72 miles from Springfield, IL
- 166 miles from Chicago, IL
- 168 miles from St. Louis, MO





Duck Creek  
Power Station



Peoria  
Peoria Resource Center  
Edwards Power Station



### **Lifestyle**

Peoria combines the resources and attractions of a city with an affordable cost of living, safe streets and a relaxed lifestyle.

Peoria offers:

- Several public and parochial school systems
- Bradley University
- First-class medical facilities
- A broad range of shopping
- Cultural attractions like a symphony, ballet, theaters and museums
- Professional baseball and hockey
- College basketball

### **Links**

To learn more about Peoria and the surrounding area, visit:

[www.ci.peoria.il.us](http://www.ci.peoria.il.us)

[www.peoria.org](http://www.peoria.org)

[www.pjstar.com](http://www.pjstar.com)

[www.discoverpeoria.com](http://www.discoverpeoria.com)