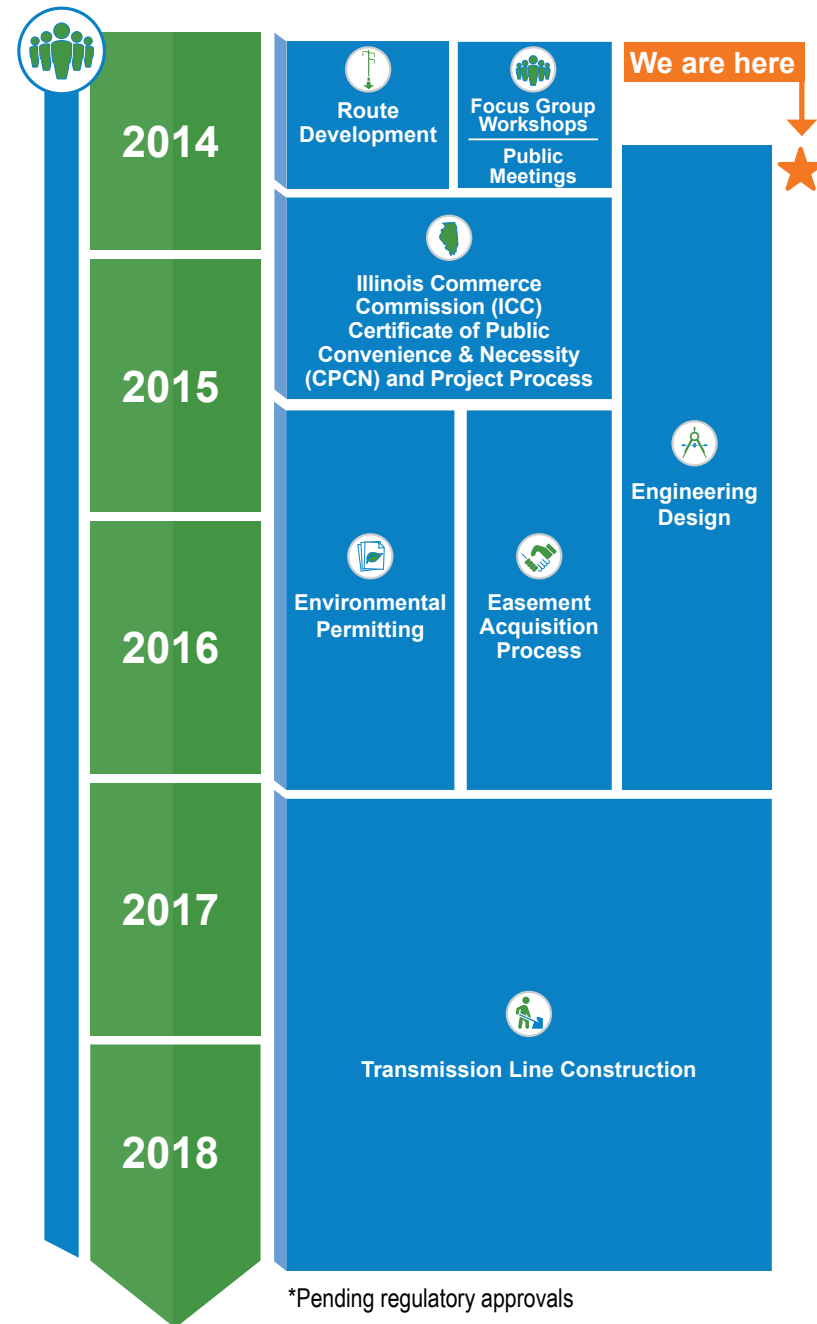


## PROJECT SCHEDULE\*

Stakeholder and public outreach will occur throughout the project

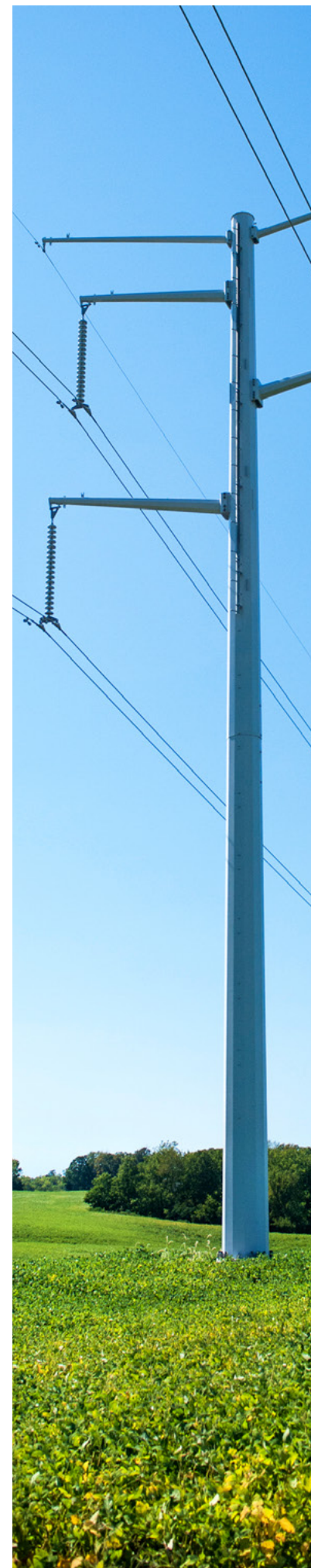
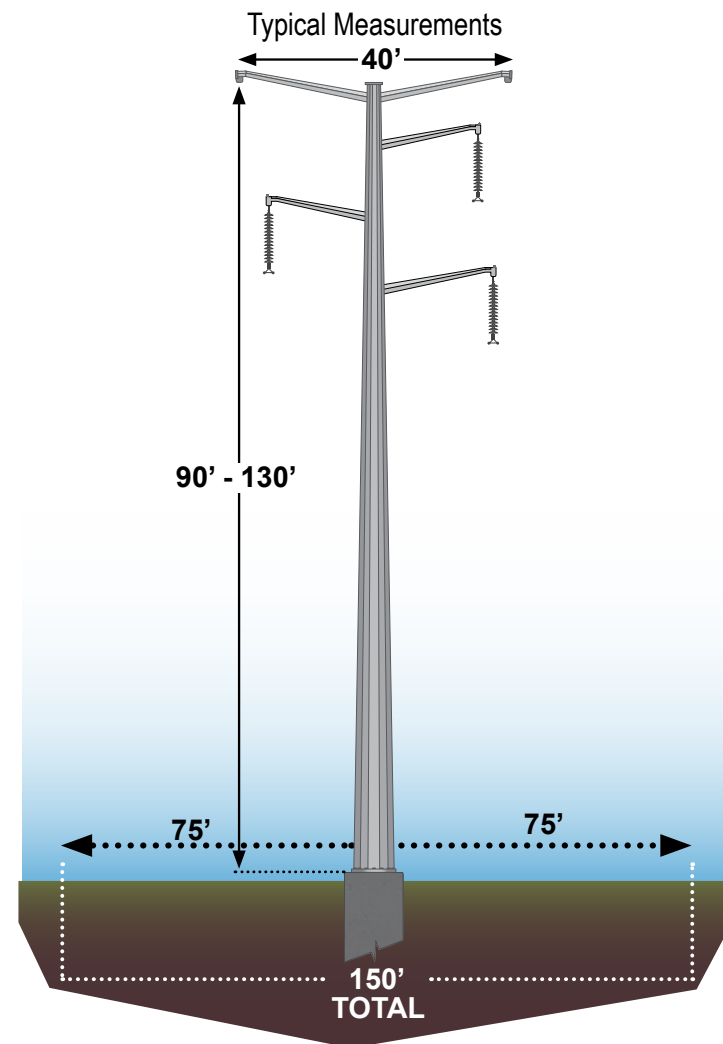


**What is an easement?** An easement is an interest or right to use the land of another for a specific purpose. For this project, landowners will be requested to grant an easement to ATXI for the right to use a defined strip of land for electric transmission line:

- construction
- operation
- maintenance

## STRUCTURE DESIGN AND EASEMENT

Voltage	345,000 volts
Structure Type	Single-shaft steel poles
Height Range	90 – 130 feet tall (typical)
Foundation	Concrete pier
Foundation Diameter	7 – 10 feet (typical)
Span Length	850 feet (average)
Structures per Mile	6 – 7 (average)
Conductor Clearance	25 feet (minimum)
Line Easement Width	150 feet



## Open House Handout SPOON RIVER TRANSMISSION LINE

### PROJECT OVERVIEW

Ameren Transmission Company of Illinois (ATXI) proposes to build a 345,000-volt transmission line that will connect Peoria and Galesburg. The Spoon River Transmission Line Project is part of a Multi-Value Project (MVP) that was approved in 2011 by the Midcontinent Independent System Operator (MISO), a regional transmission organization. The Spoon River Transmission Line Project is directly aligned with Ameren's strategic goals of providing customers with reliable, efficient, and environmentally responsible energy.

Structure type:	Single-shaft steel poles
Line easement width:	150 feet
Length:	40-46 miles
In-service date:	2018
Voltage:	345,000-volt

### PROJECT BENEFITS

- Improves access to lower-cost electricity and electricity from renewable sources
- Improves electric system reliability
- Reduces transmission congestion
- Supports approximately 100 construction jobs
- Supports the State of Illinois to meet its Renewable Portfolio Standard (RPS)

### RECAP: April/May Public Open Houses and Community Representative Forums

#### Community Representative Forums (CRF)

State and federal agency representatives, city, state, township, and county representatives, and non-government organizations were invited to attend a CRF in Galesburg, Wyoming, or Peoria from April 29 - May 1. Attendees were given a presentation with similar information available at the open houses, identified top three routing sensitivities their constituents would be most concerned about, provided input on large aerial maps of the potential route alternatives, and participated in a Q&A session.

#### Public Open Houses

More than 500 people attended six open houses in Galesburg, Wyoming, and Peoria from April 28 - May 1. Attendees were able to tour a variety of project information stations staffed with technical leads, view and provide input on route maps, and complete our comment forms. An online meeting was also available during this time.

### TOP SENSITIVITIES

(from the CRFs and open houses)

- Agricultural Lands
- Prime Farmland
- Residences/Residential Use Areas
- Schools
- Streams, Waterbodies, and Other Drainages
- Conservation Land and Easements
- Forests

### UP NEXT: Illinois Commerce Commission (ICC) Process

With the proposed routes identified, the next step for the Spoon River Transmission Line Project is to file a petition with the ICC requesting their review and approval of the project. If approved, the ICC will issue a Certificate of Public Convenience and Necessity (CPCN) and approve a final route.

Once the Petition is filed, the ICC will issue a docket number. For more information, visit: [www.icc.illinois.gov](http://www.icc.illinois.gov)

Docket documents can be viewed at: [www.icc.illinois.gov/e-docket](http://www.icc.illinois.gov/e-docket)

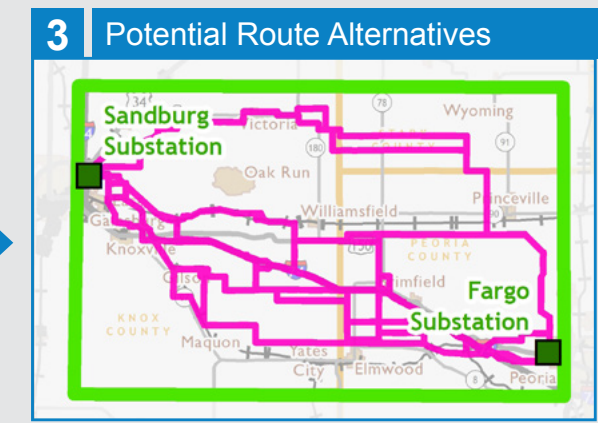
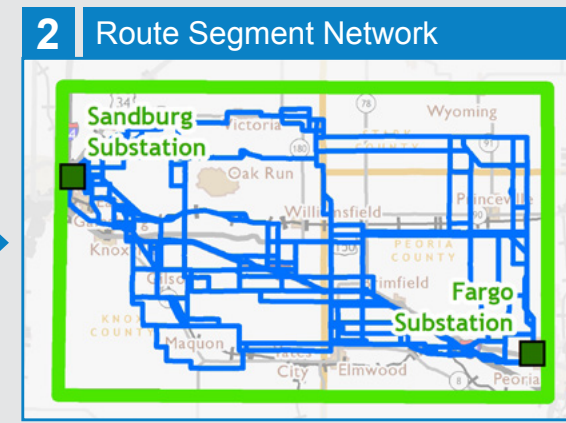
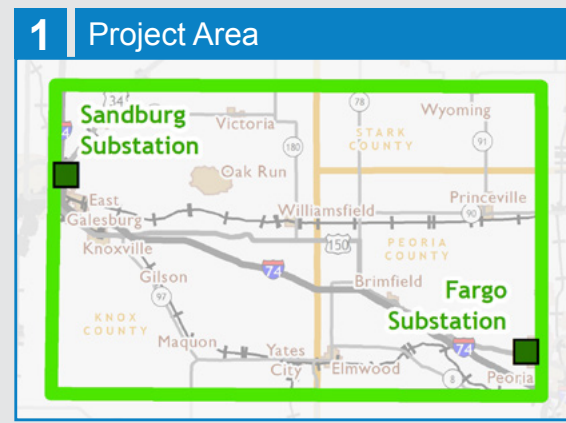
View a process graphic on our website at [SpoonRiverTransmission.com](http://SpoonRiverTransmission.com) on the Process page.

## NEED MORE INFORMATION OR TO SUBMIT INPUT? CONTACT US AT:

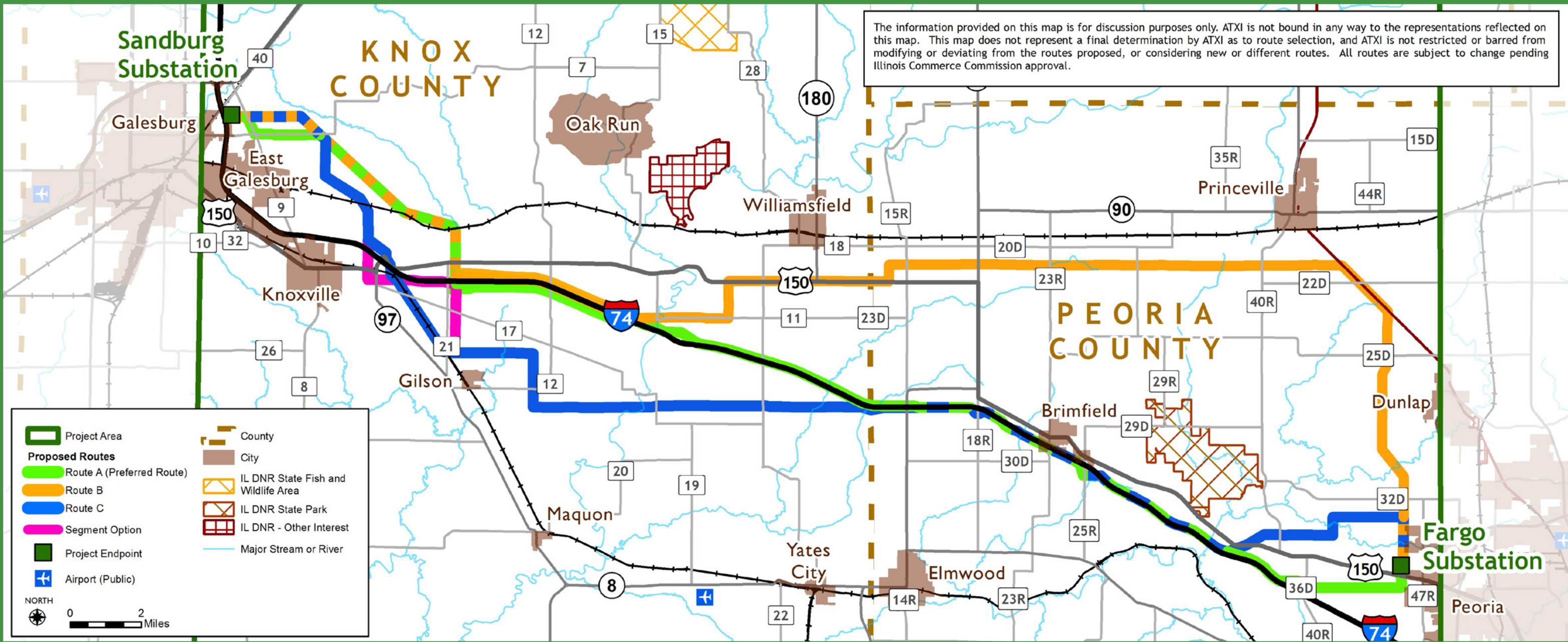
- [SpoonRiverTransmission.com](http://SpoonRiverTransmission.com)
- [SpoonRiverTransmission@ameren.com](mailto:SpoonRiverTransmission@ameren.com)
- 800.295.8912

# Routing Process

Routing a new transmission line is a multi-step process. The process has included the study of numerous route options throughout the project area. ATXI has solicited information and feedback from stakeholders and the public throughout the routing process as ATXI understands that local knowledge of the project area is vital in identifying the best possible route for the project.



## 4 ★ We are here Proposed Routes



5



Finalize and submit routes to the Illinois Commerce Commission for review and route approval