

# Limestone Ridge Project



# Hello!

Welcome to the  
Limestone Ridge Project Virtual Open House



Due to COVID-19, we are taking action to keep you and our staff safe and healthy. Rather than in-person open houses, we're providing community members with various engagement opportunities to learn more about the project and provide input on the project development within the study area. Detailed maps showing the construction area will be available for review and comment.

**CONNECT WITH THE PROJECT TEAM**

@ [LimestoneRidgeProject@ameren.com](mailto:LimestoneRidgeProject@ameren.com)

[www.LimestoneRidgeProject.com](http://www.LimestoneRidgeProject.com)

[573.232.3003](tel:573.232.3003)



# Limestone Ridge Project

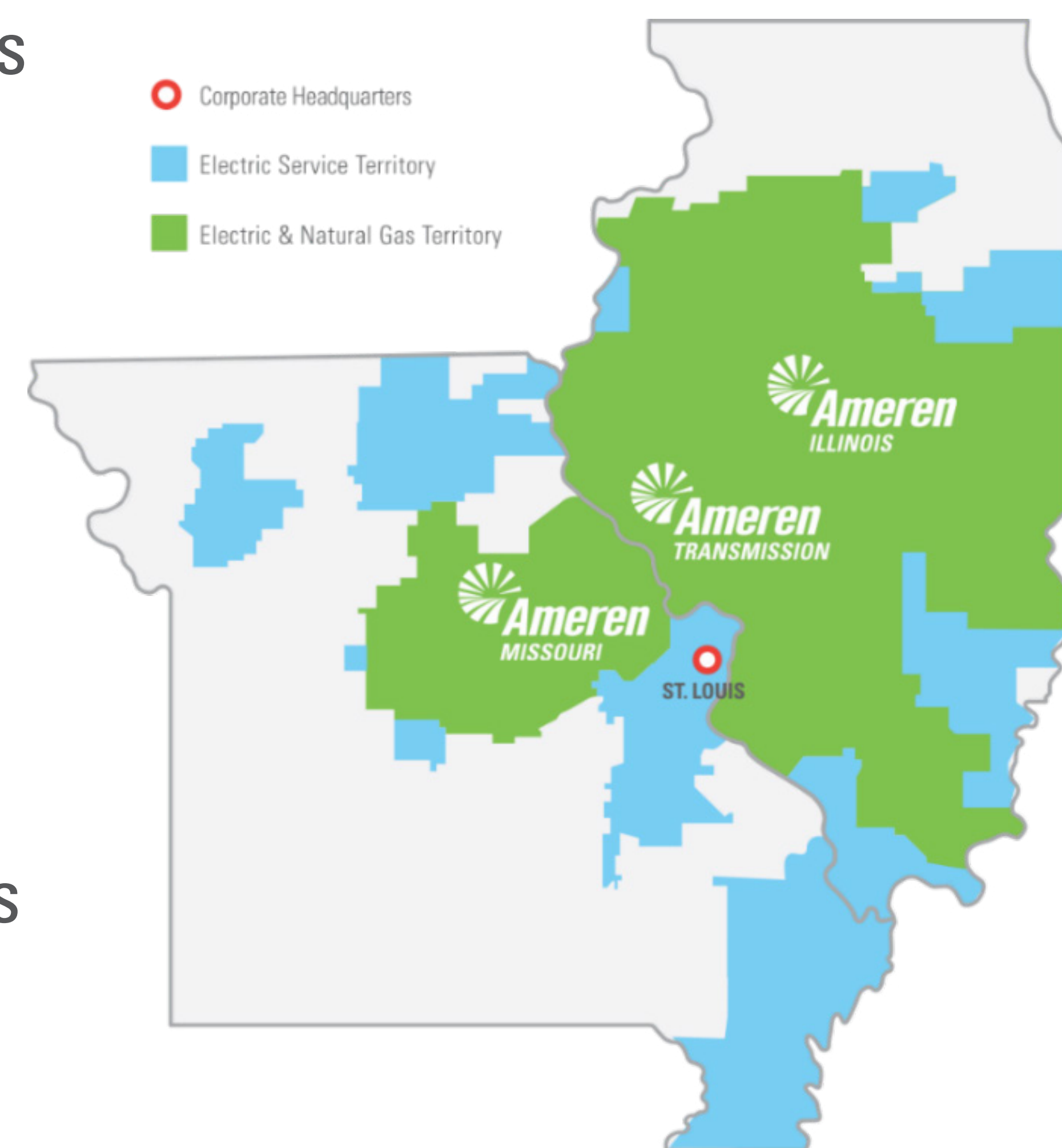


## The Project Team

Learn more about our project partners:

### Ameren Transmission Company of Illinois

- Electric transmission businesses of Ameren Illinois and ATXI are rate regulated by the Federal Energy Regulatory Commission
- Ameren invests in regional multi-value projects
- Operates over 8,200 circuit miles of transmission



Ameren will be supporting design, real estate and construction of the transmission line.

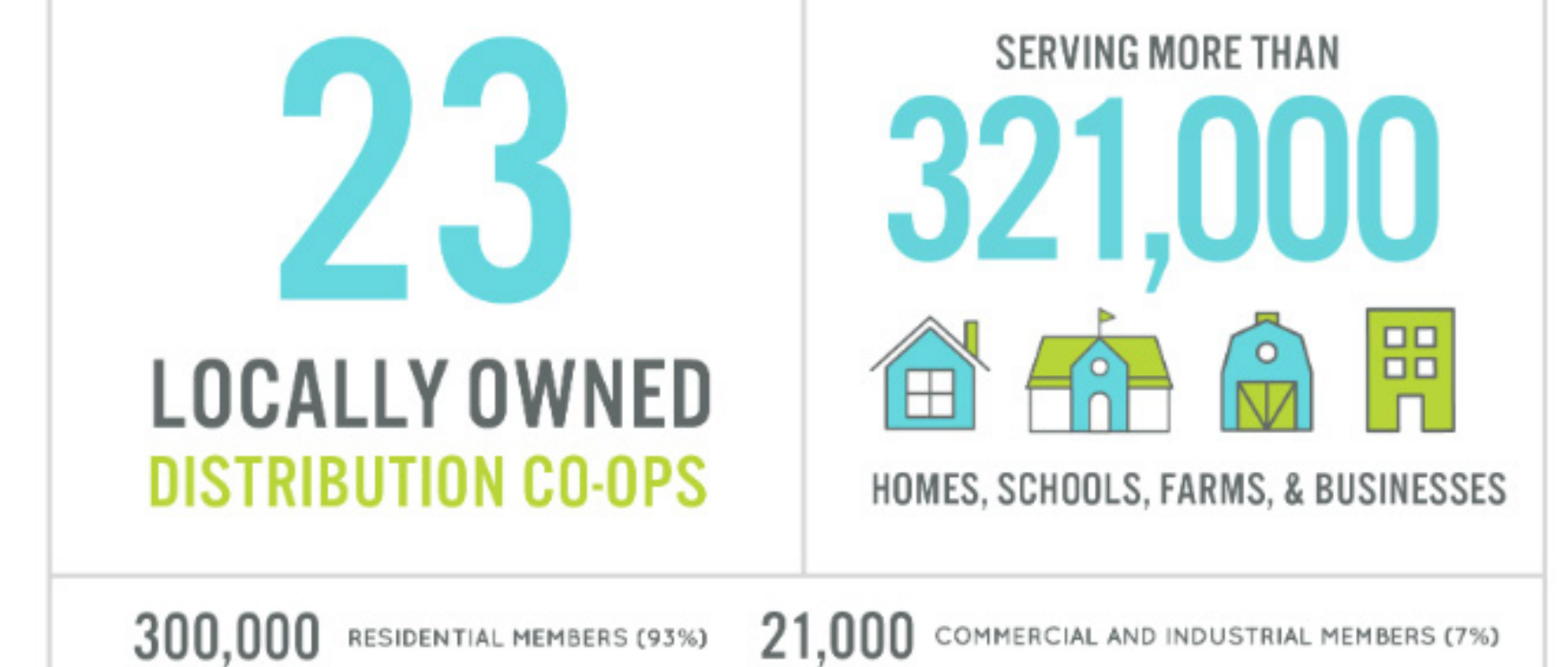
Ameren is partnering with Wabash Valley Power Alliance for this project. Wabash Valley Power Alliance provides power to Citizens Electric Corporation.



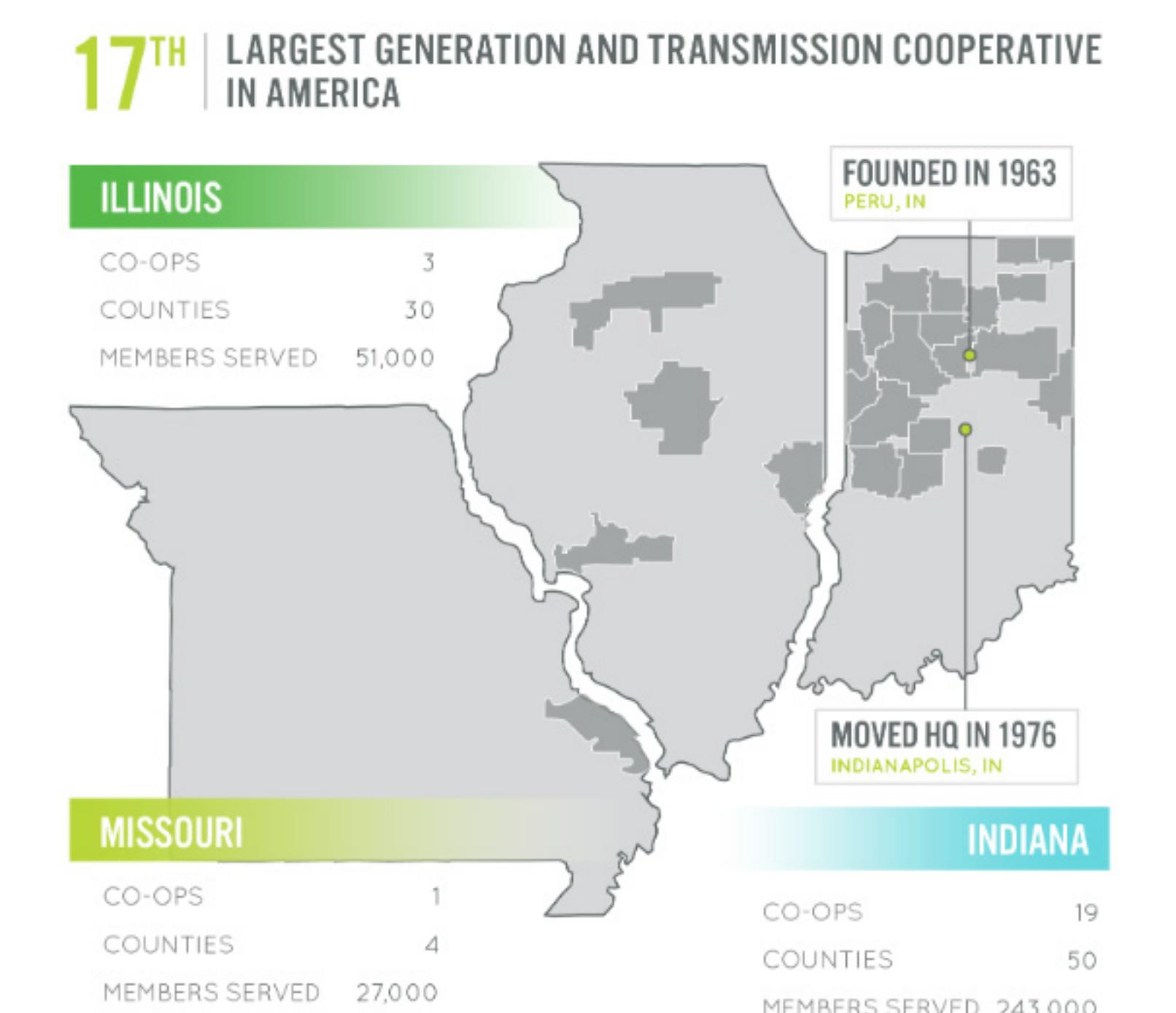
- Serves more than 321,000 members
- Supplies electric cooperatives with power to Member-owners in their service territory, such as Citizens Electric Corporation
- Supporting the design, real estate and construction for the substation portion of the project

Wabash will be supporting design, real estate and construction of the project substation.

WABASH VALLEY POWER IS A NOT-FOR-PROFIT ELECTRIC COOPERATIVE AND WHOLESALE PROVIDER OF ELECTRICITY TO OUR MEMBERS:



- Serves more than 27,000 members (90% are residential members), including Ste. Genevieve, Perry Counties, eastern St. Francois and northern Cape Girardeau Counties
- Receives power supply from Wabash Valley Power Alliance



CONNECT WITH THE PROJECT TEAM

@ LimestoneRidgeProject@ameren.com

[www.LimestoneRidgeProject.com](http://www.LimestoneRidgeProject.com)

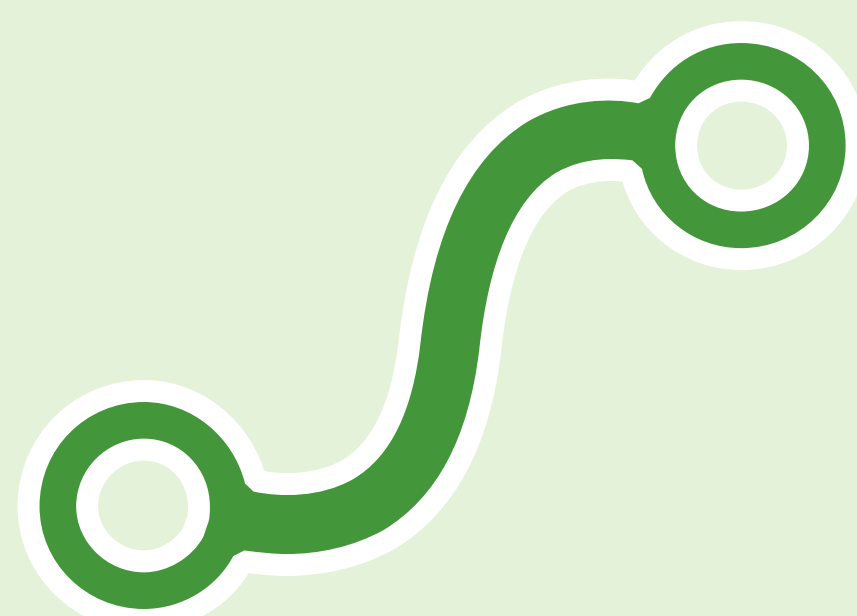
📞 573.232.3003



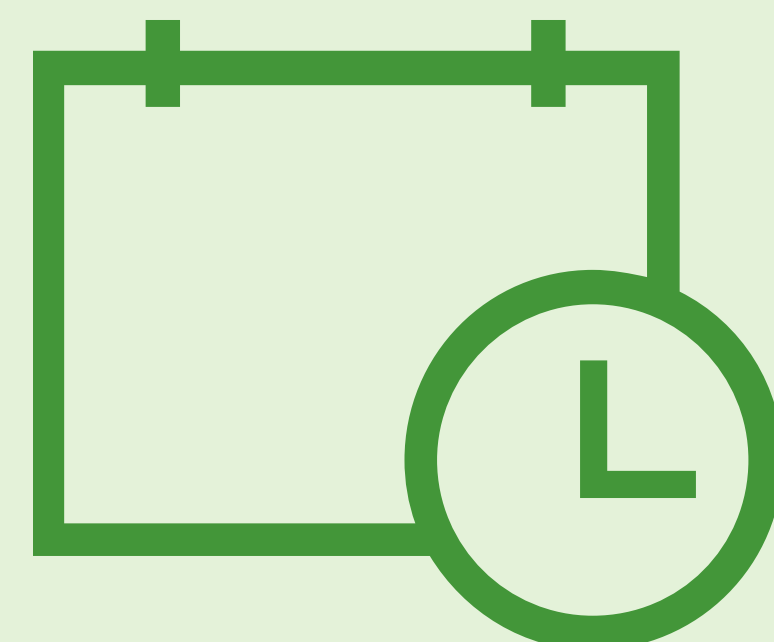
# Limestone Ridge Project



Proposing to construct a new, approximately 14-19 mile 138 kV transmission line and associated facilities in Southeast Missouri.



The new line is planned to connect a new substation in Perry County to a new substation in Cape Girardeau County.



The project is proposed to be in service by December 2023.

**CONNECT WITH THE PROJECT TEAM**

@ [LimestoneRidgeProject@ameren.com](mailto:LimestoneRidgeProject@ameren.com)

[www.LimestoneRidgeProject.com](http://www.LimestoneRidgeProject.com)

[573.232.3003](tel:573.232.3003)

# Limestone Ridge Project



## Schedule & Benefits

### Schedule

**2020**

- Collect data
- Gather public input
- Develop routes

**2021**

- Engineering & permitting
- File for Certificate from PSC
- PSC review process

**2022**

- Engineering & permitting
- Field surveys
- Real estate acquisitions
- Preconstruction activities
- Substation construction

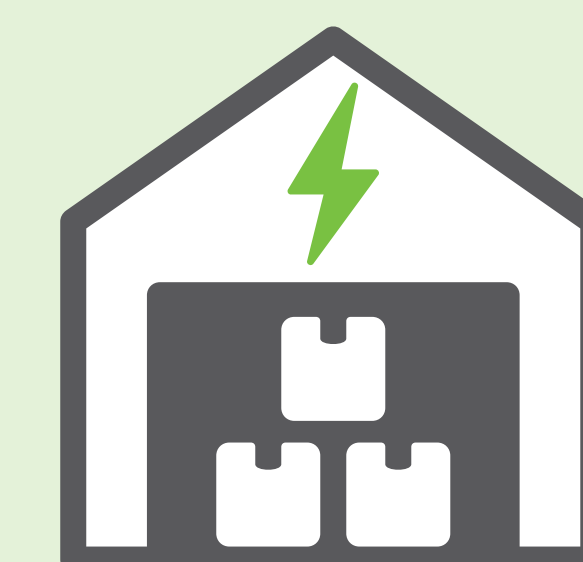
**2023**

- Construction
- Project in-service (December)

### Project Benefits



Improve energy reliability for local homes and businesses



Provide additional energy support to local manufacturing facilities



Support continued area economic growth

**CONNECT WITH THE PROJECT TEAM**

@ [LimestoneRidgeProject@ameren.com](mailto:LimestoneRidgeProject@ameren.com)

[www.LimestoneRidgeProject.com](http://www.LimestoneRidgeProject.com)

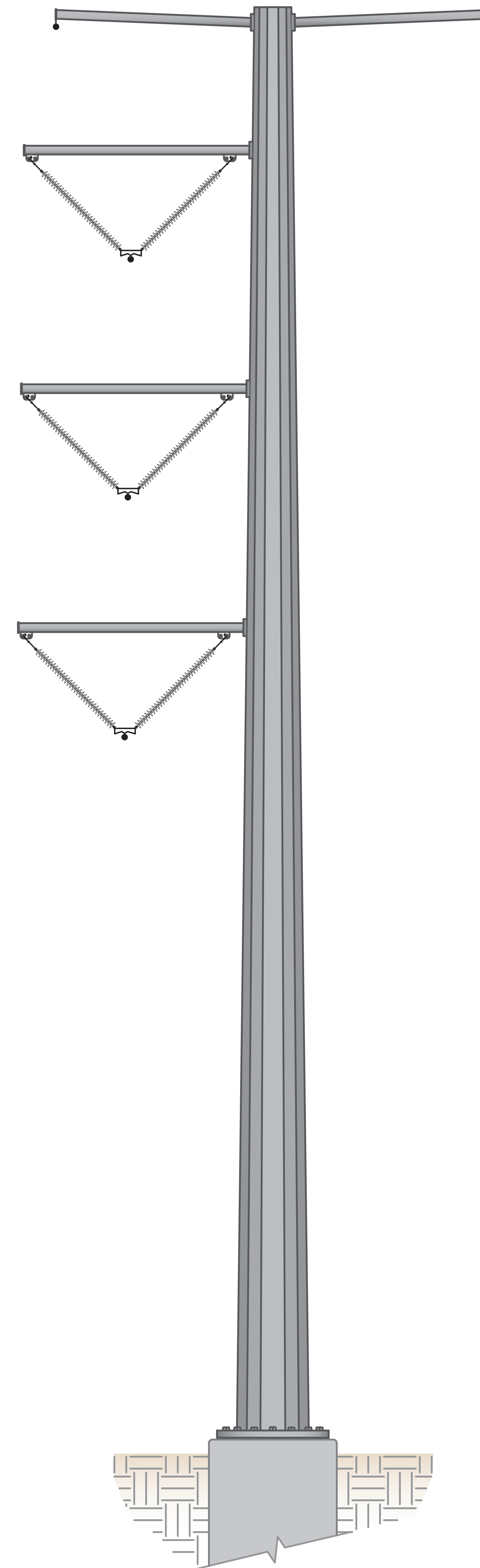
573.232.3003



# Limestone Ridge Project

## Structures

- ? Benefits of galvanized steel monopoles:
- Compact footprint compared to H-frame and lattice tower
  - Simple and quick construction
  - Galvanized layer protects steel from corrosion
  - Engineered to optimize performance



### Typical 138kV Steel Monopole Structures\*

- Height: 100 - 160 ft
- Span: 800 - 1,000 ft
- Structures/mile: 6 - 7
- Conductor clearance: 25 ft (minimum)
- Drilled concrete pier foundation: 7 - 12 ft diameter
- Easement width: 125 ft
- Above-ground foundation: 2 ft

\*138kV with the potential of a future 345kV circuit. Ameren will work with regulators, landowners and community should a system expansion be required in the future.

**CONNECT WITH THE PROJECT TEAM**

@ [LimestoneRidgeProject@ameren.com](mailto:LimestoneRidgeProject@ameren.com)

 [www.LimestoneRidgeProject.com](http://www.LimestoneRidgeProject.com)

 573.232.3003



# Limestone Ridge Project



## Routing Criteria

**Our goal is to** take advantage of Opportunities while understanding and minimizing impacts to Sensitivities and adhering to Technical Guidelines and Statutory Requirements.

### OPPORTUNITIES



Linear features that are oriented in the direction of the project:

- Field lines
- Property lines
- Section lines
- Roads
- Utility corridors

### SENSITIVITIES



Area resources or conditions that can potentially limit transmission line development:

- Agricultural conflicts
- Airports/VOR
- Cemeteries
- Communication Towers
- Conservation Areas/ Nature Preserves
- Cultural Resources
- Planned Development (future)
- Floodplains (more difficult construction and many times have sensitive species)
- Forest
- Hospitals
- Karst Areas
- Levees
- Mines/Quarries
- Pipelines\*
- Railroads\*
- Religious Facilities
- Residences (especially large clusters of homes)
- Scenic Highway
- Schools/Daycares
- Streams/Wetlands
- Wells

*\*Linear features with additional precautions and studies needed*

Additional permits or approvals from various federal, state and local agencies may be required. These include but are not limited to:



Missouri Public Service Commission



Missouri Department of Conservation



Missouri Department of Natural Resources



Missouri Department of Transportation



Cape Girardeau County



Perry County



U.S. Fish and Wildlife Service



U.S. Army Corps of Engineers

**CONNECT WITH THE PROJECT TEAM**

@ [LimestoneRidgeProject@ameren.com](mailto:LimestoneRidgeProject@ameren.com)

[www.LimestoneRidgeProject.com](http://www.LimestoneRidgeProject.com)

📞 573.232.3003

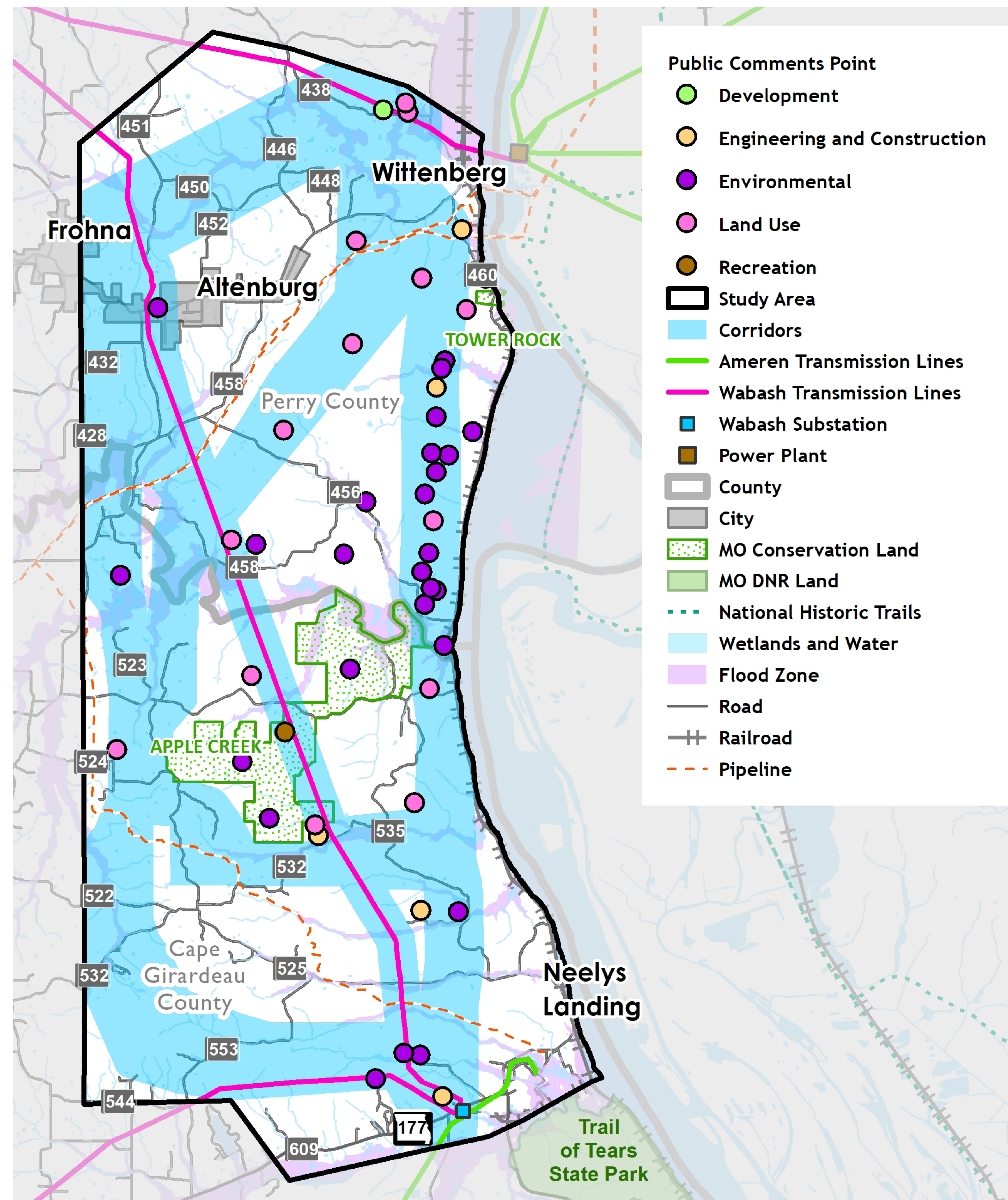


# Limestone Ridge Project

## What We Heard

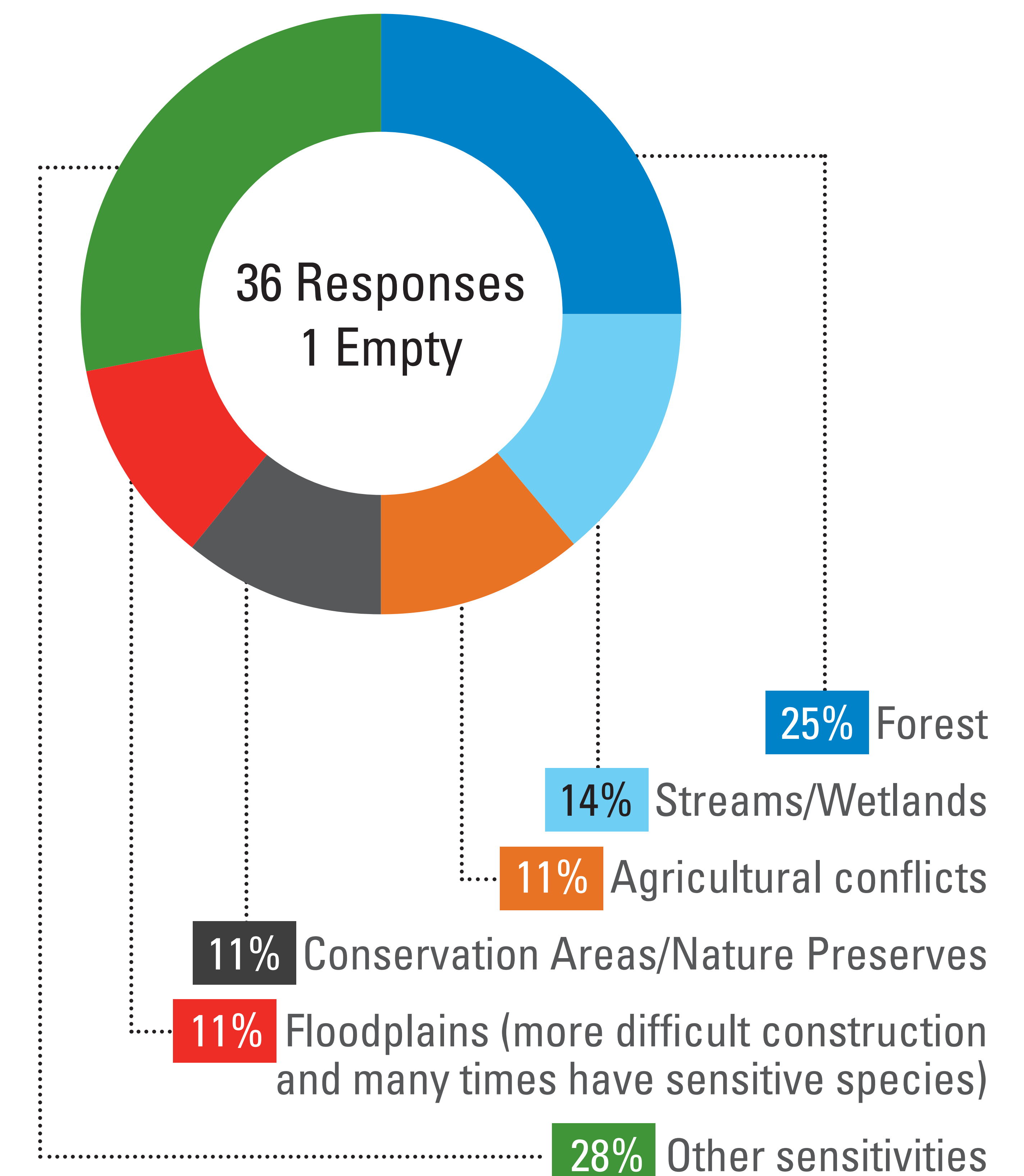
During our Phase 1 of public engagement in August 2020, our project team received input from the community on the Proposed Route Corridors. All comments were reviewed during the development of our Preliminary Route Alternatives. In general, most comments fit into the following categories:

- Development
- Engineering and construction
- Environmental
- General
- Land use
- Real estate
- Recreation



### Phase 1 Virtual Open House Survey Results

Select the top three Sensitivities that are most important to you



**CONNECT WITH THE PROJECT TEAM**

@ LimestoneRidgeProject@ameren.com

 [www.LimestoneRidgeProject.com](http://www.LimestoneRidgeProject.com)

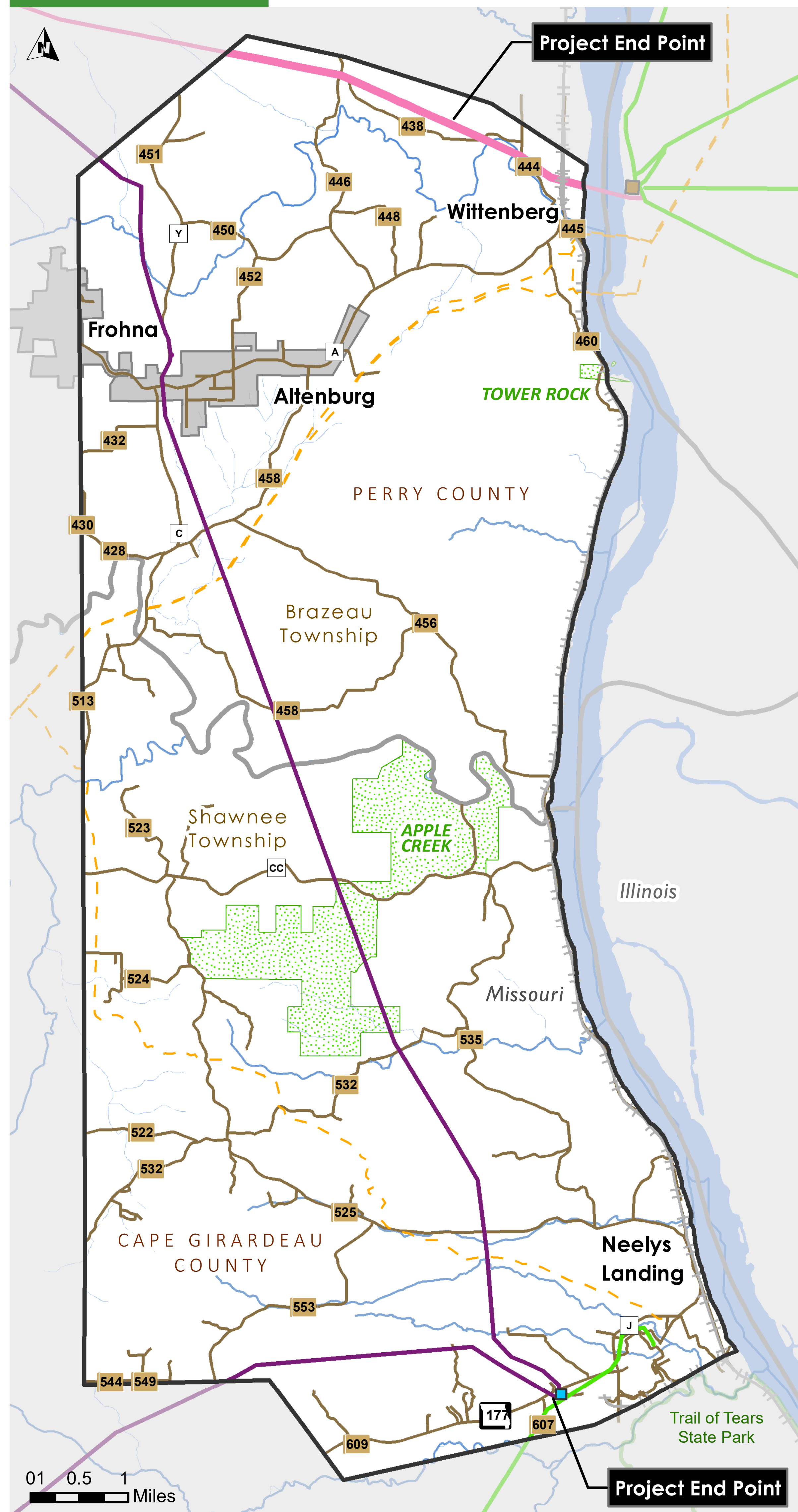
 573.232.3003



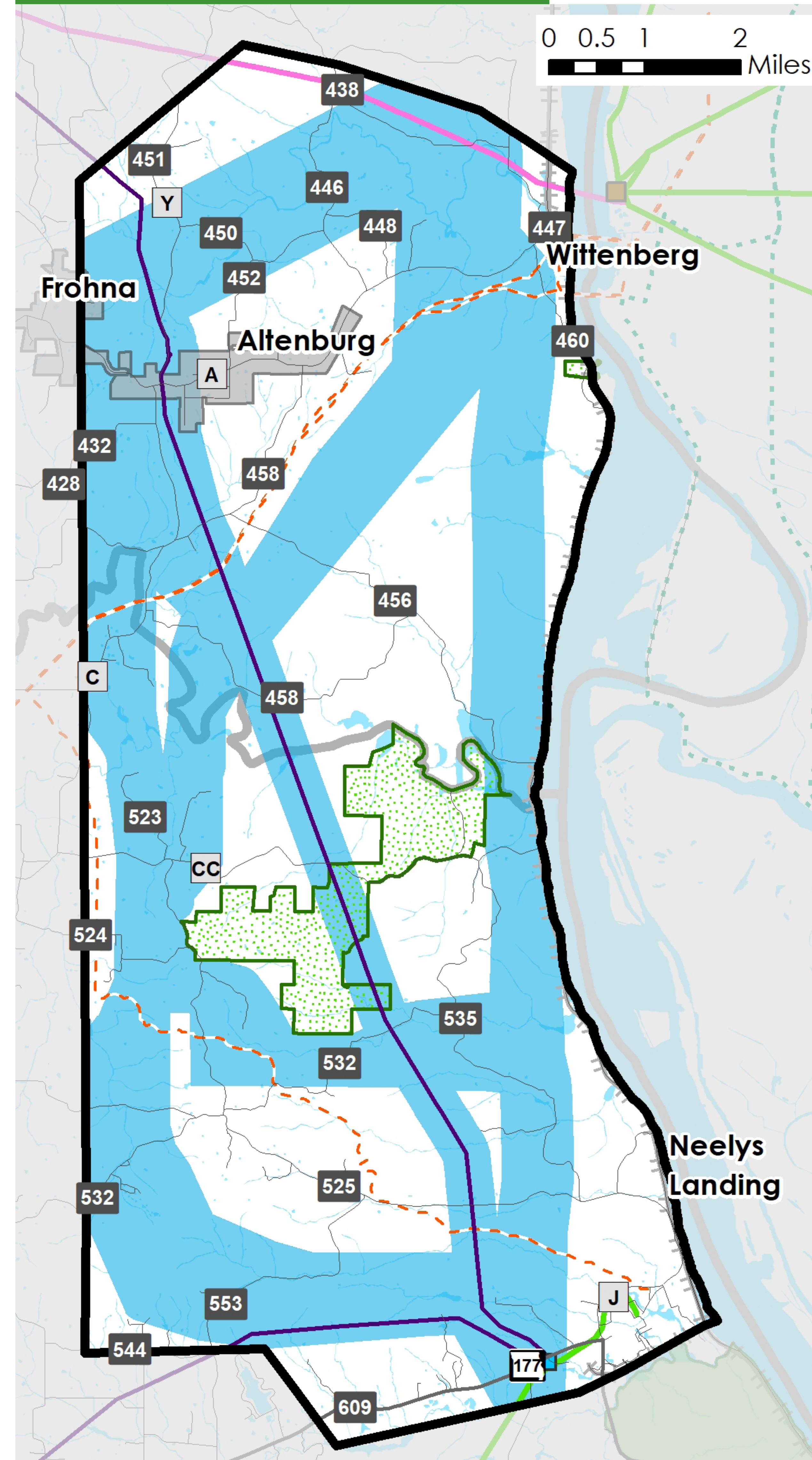
# Limestone Ridge Project



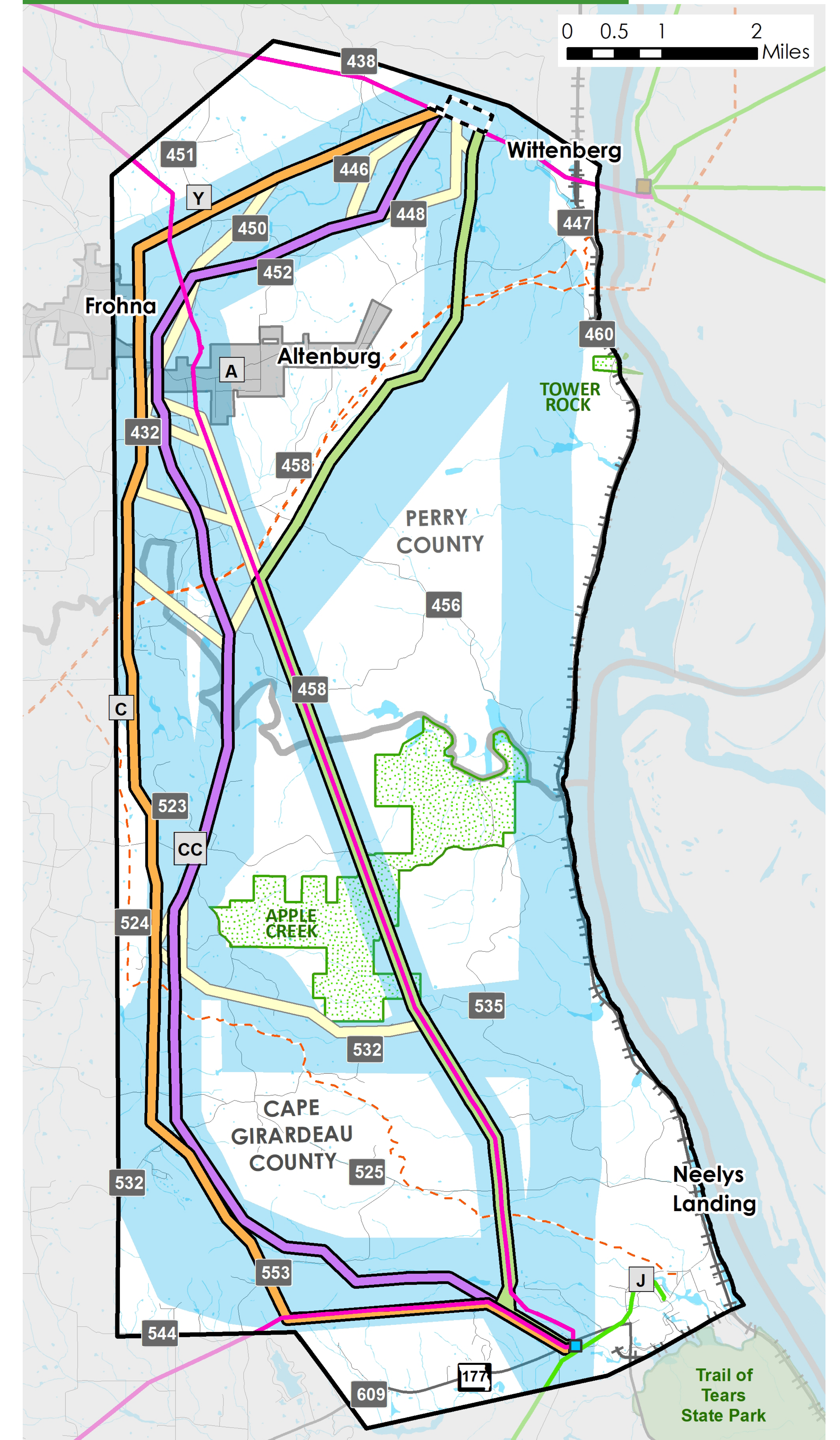
## Study Area



## Proposed Route Corridors



## Preliminary Route Alternatives



CONNECT WITH THE PROJECT TEAM

@ LimestoneRidgeProject@ameren.com

[www.LimestoneRidgeProject.com](http://www.LimestoneRidgeProject.com)

📞 573.232.3003



# Limestone Ridge Project



## Real Estate

Once a final route has been approved, Ameren will begin negotiations for acquiring easements.

### Easement Discussions

Project representatives will meet with affected landowners to discuss:

- Land surveys and studies
- Proposed easement
- Type(s) of structures
- Compensation
- Property restoration
- Damage settlements
- Right-of-way clearing

### What is an easement?

An easement is an interest or right to use the land of another for a specific purpose. Ameren and our partners will be seeking to obtain easements from affected landowners for the construction, operation and maintenance of the electric transmission line.



**CONNECT WITH THE PROJECT TEAM**

@ [LimestoneRidgeProject@ameren.com](mailto:LimestoneRidgeProject@ameren.com)

[www.LimestoneRidgeProject.com](http://www.LimestoneRidgeProject.com)

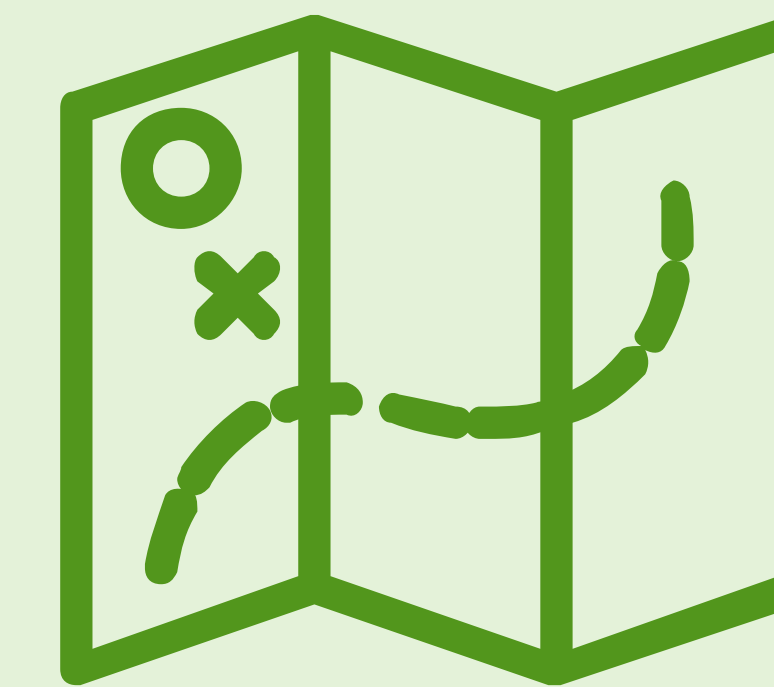
[573.232.3003](tel:573.232.3003)

# Limestone Ridge Project



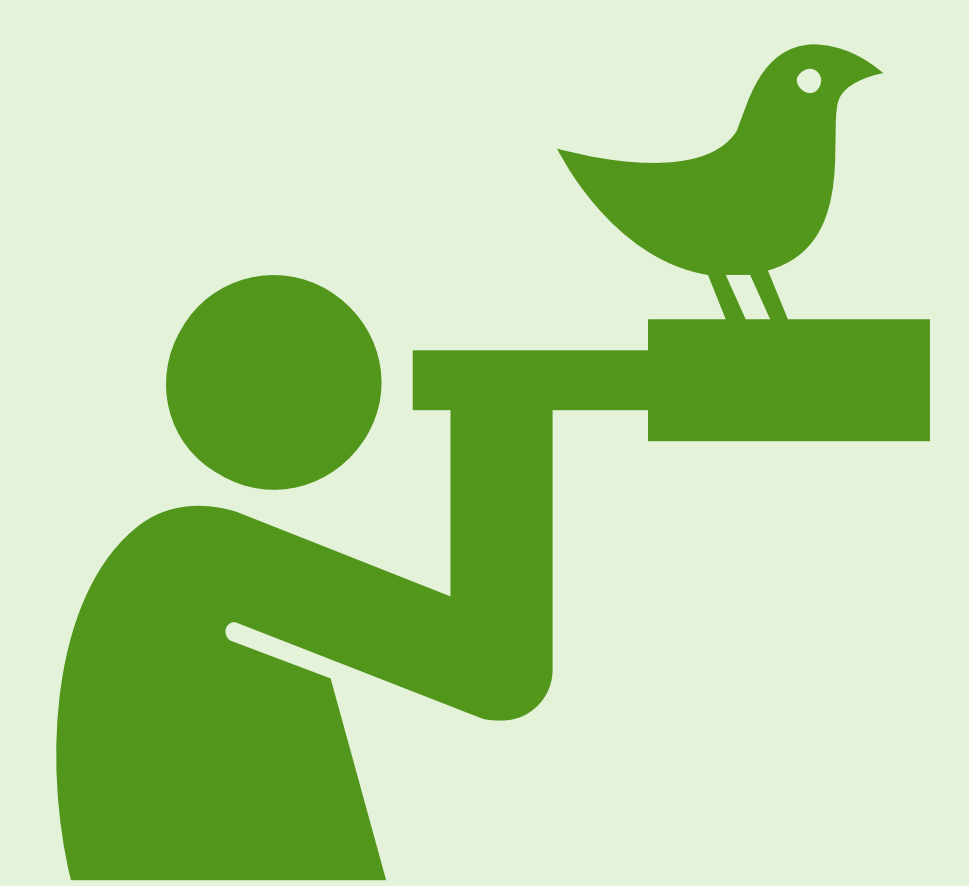
## Field Surveys

The field data we collect allows our scientists and engineers to plan and design the line with the information necessary for construction.



## Archaeological Surveys

Archaeological surveys consist of walking the easement area to look for cultural artifacts on the ground. If artifacts are found, they are collected for further analysis.



## Wildlife Surveys

Wildlife surveys provide important data about the species living in the area, helping us plan how to minimize impacts to wildlife species and habitat.



## Soil Surveys

The design process requires information about the soil where the structure will be located. Collecting soil information is completed using the following steps by our geotechnical field survey crews:

- Gather samples from each site by digging a 4-6 inch wide hole into the ground, known as a soil boring. Soil boring areas will be filled back in after the survey.
- Review samples to determine the physical properties and layering of the soil.
- Use soil information to design each structure.



## Wetland and Stream Surveys

The purpose of the surveys is to determine if these features can be classified as a wetland or a stream based on U.S. Army Corps of Engineers guidelines. The crew will collect data on vegetation, hydrology and soil characteristics.

**CONNECT WITH THE PROJECT TEAM**

@ [LimestoneRidgeProject@ameren.com](mailto:LimestoneRidgeProject@ameren.com)

[www.LimestoneRidgeProject.com](http://www.LimestoneRidgeProject.com)

573.232.3003



# Limestone Ridge Project

## Construction Phases

### Construction Phases

A one-year construction season is anticipated in 2023. There will be six major stages of construction including:



Survey structure locations and vegetation clearing



Auger holes and pour foundation



Assemble structure on the ground



Lift and place structure on foundation



String wires



Restore easement and energize line

Construction of the transmission line occurs in phases and will not be constant on a landowner's property for a full year.



### What to expect during construction

We will do our best to minimize impacts during construction. However, the following temporary impacts may occur:

- Noise, dust, and lights for nearby landowners
- Equipment, materials and construction crews located along the road and in project right-of-way
- Crews will be working during daylight hours with potential for some work to be completed after dusk
- Temporary, intermittent lane and road closures
- Removal of all incompatible vegetation within the easement area
- Installation of erosion control measures to reduce impacts to streams and wetland areas

We will provide more information before construction begins.

**CONNECT WITH THE PROJECT TEAM**

@ [LimestoneRidgeProject@ameren.com](mailto:LimestoneRidgeProject@ameren.com)

[www.LimestoneRidgeProject.com](http://www.LimestoneRidgeProject.com)

 573.232.3003



# Limestone Ridge Project



**WE NEED  
YOUR INPUT!**

## Online Comment Map

Add a comment to provide our team information about your area

## Detailed Maps

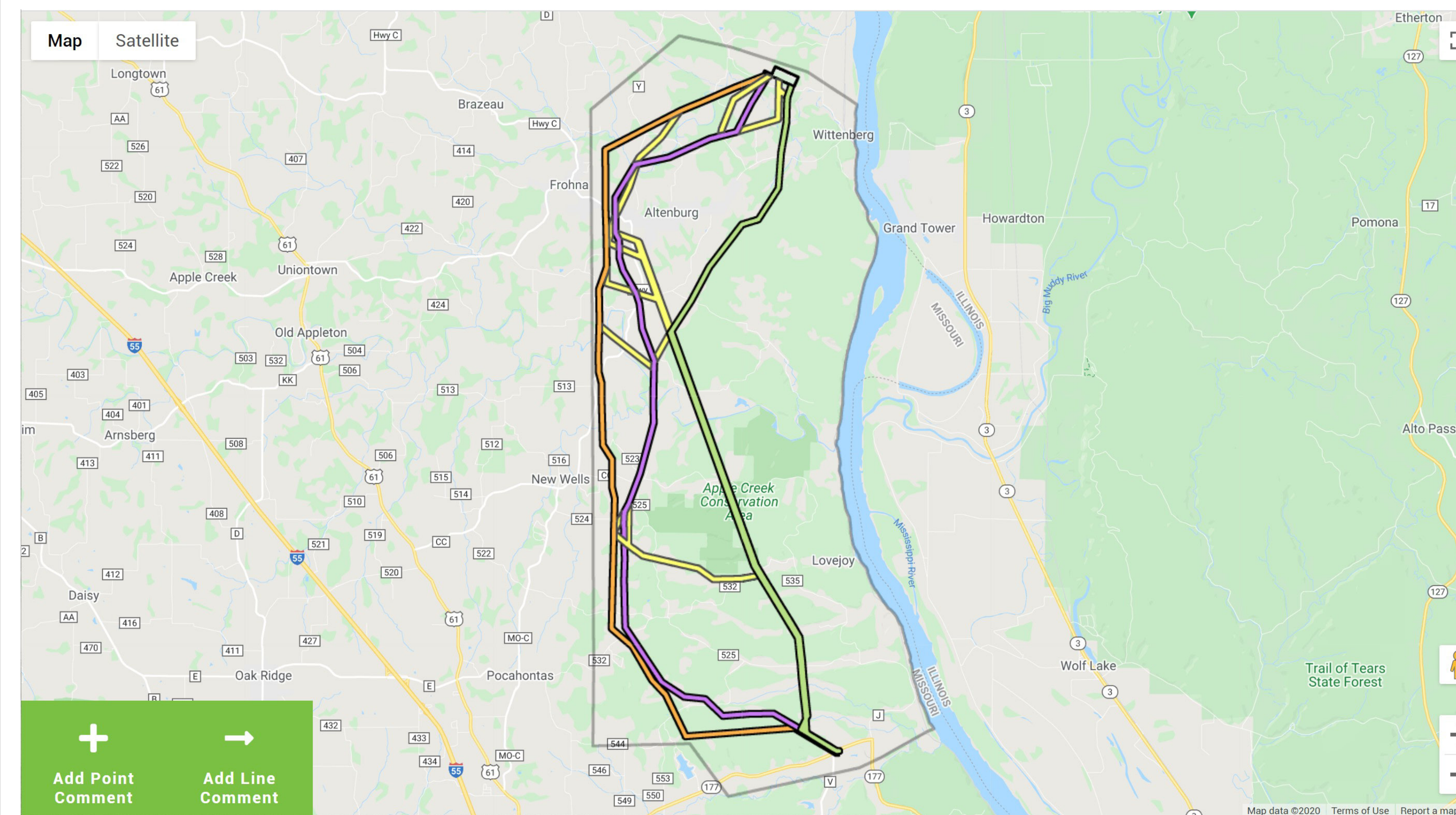
View a detailed map of the Preliminary Route Alternatives

### LIMESTONE RIDGE PROJECT

Ameren Transmission Company of Illinois (ATXI), in collaboration with Wabash Valley Power Alliance (WVPA), Citizens Electric Corporation and Ameren Missouri, is proposing to construct a new, approximately 12-mile 138 kV transmission line and state-of-the-art substations to improve energy reliability for local communities in Southeast Missouri. The new line will connect two new substations in Perry and Cape Girardeau Counties. The proposed in-service date for the project is December 2023.

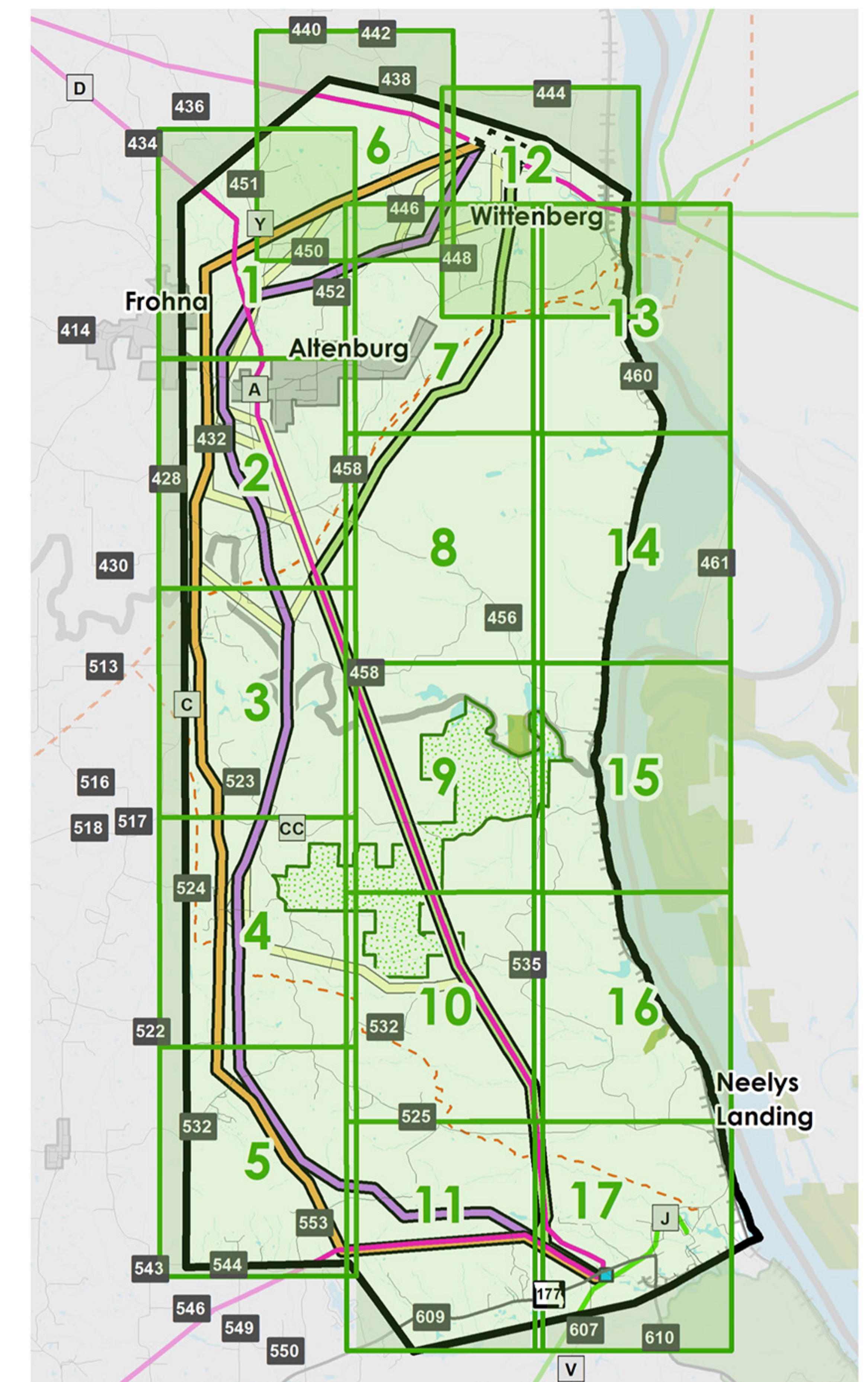
**We are collecting information within the Project Study Area**

Add a comment to provide our team information about your area.



#### HOW TO TIPS:

- Type the following link into your search engine:  
[limestoneridgeresources.com/interactivemap.html](https://limestoneridgeresources.com/interactivemap.html)
- Click the green “add comment” button
- Use your mouse to navigate to a point on the map in the area of your comment
- Complete the text box
- Click submit



**CONNECT WITH THE PROJECT TEAM**

@ [LimestoneRidgeProject@ameren.com](mailto:LimestoneRidgeProject@ameren.com)

[www.LimestoneRidgeProject.com](http://www.LimestoneRidgeProject.com)

[573.232.3003](tel:573.232.3003)



# Limestone Ridge Project



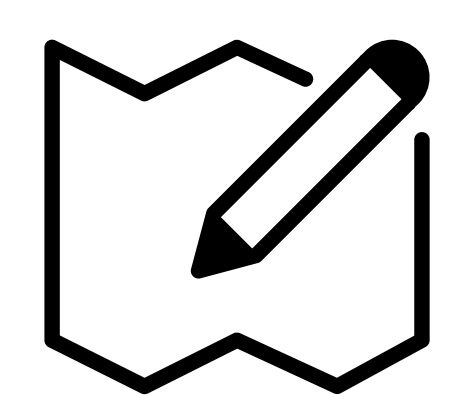
## Next Steps



Ongoing

Identify, Analyze, and Select Final Route

- We collect data from federal, state and local agencies, stakeholders, public comments and publicly-available data sources.



April – June 2020

Study Area

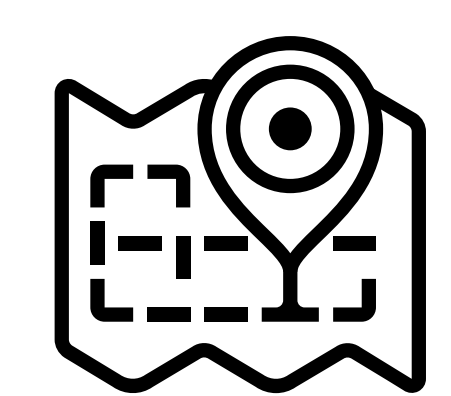
- Formation of the Routing Team
- Development of Routing Criteria (see next slide) and identification of project parameters
- Identification of Study Area
- Review of publicly available information
- Virtual Community Representative Forums (June 23 and June 24)



July – August 2020

Route Corridors

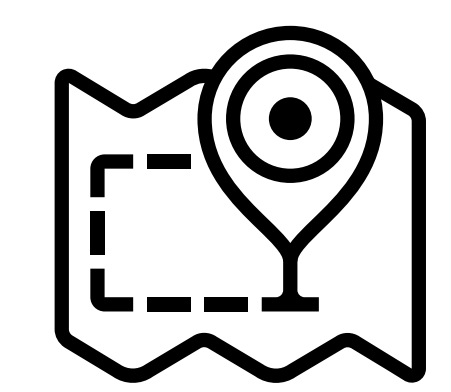
- Evaluation of stakeholder input
- Development of Route Corridors
- Phase 1 Public Engagement – present potential route corridors



★ September - October 2020

Preliminary Route Alternatives

- Evaluate input received from first phase of public engagement
- Development of Route Alternatives
- Phase 2 Public Engagement – present preliminary route alternatives (early Fall 2020)

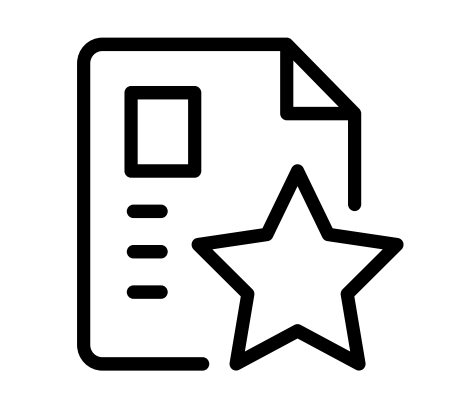


November - December 2020

Identify, Analyze and Select Final Route

- Evaluate input received from second phase of public engagement
- Phase 3 Public Engagement – present preferred route

December 2020 - FINAL ROUTE DETERMINED



Early 2021

Prepare regulatory (or PSC) documents

- Once the Public Service Commission documents are submitted, an official review process begins.



# Limestone Ridge Project



## More Opportunities to Connect

@ LimestoneRidgeProject@ameren.com

www.LimestoneRidgeProject.com

573.232.3003

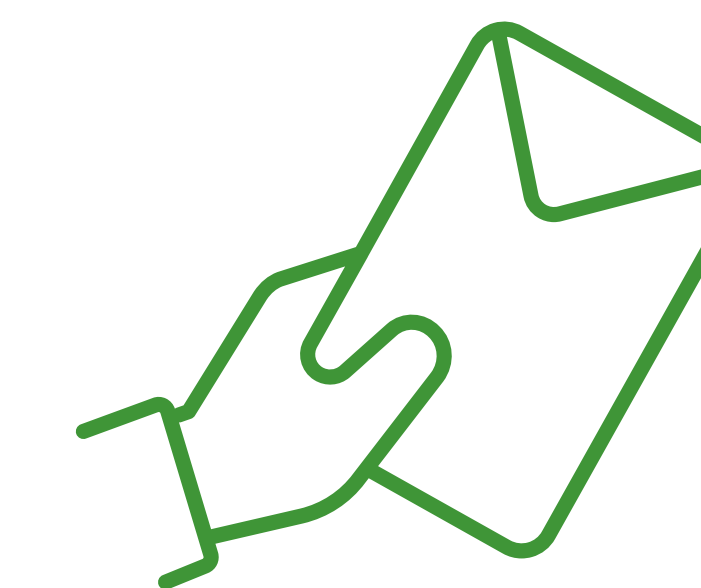
### JOIN US FOR OUR VIRTUAL WEBEX MEETINGS ON OCTOBER 28!



Attend one of our Virtual Webex meetings on **Wednesday, October 28 at 12:00pm or 7:00pm**. These virtual online meetings will provide attendees the opportunity to learn about the project, listen to subject matter experts discuss different elements of the project, ask questions and provide input. The same information will be available at each Virtual Webex meeting. Detailed maps showing the Preliminary Route Alternatives will be available for review.

Visit our project website on October 28 to join one of the Virtual Webex Meetings: [limestoneridgeproject.com](http://limestoneridgeproject.com)

### ADDITIONAL ENGAGEMENT OPPORTUNITIES OCTOBER 19 THROUGH OCTOBER 30:



Pick up a packet of project information at Citizens Electric Corporation located *1500 Rand Avenue, Perryville MO 63775* Monday-Friday between **7:30am-5pm** from **October 19 – October 30**.



Request a mailed or emailed packet by emailing us or leaving a message on our hotline with your preferred address.



Contact our project team by leaving a message on our project hotline at **573.232.3003** and our project team will call you back within 24 hours or by email at **[limestoneridgeproject@ameren.com](mailto:limestoneridgeproject@ameren.com)**.

### CONNECT WITH THE PROJECT TEAM

@ LimestoneRidgeProject@ameren.com

www.LimestoneRidgeProject.com

573.232.3003