

Welcome to the Limestone Ridge Project Community Representative Forum Virtual Meeting

June 23 at 9:00 a.m.

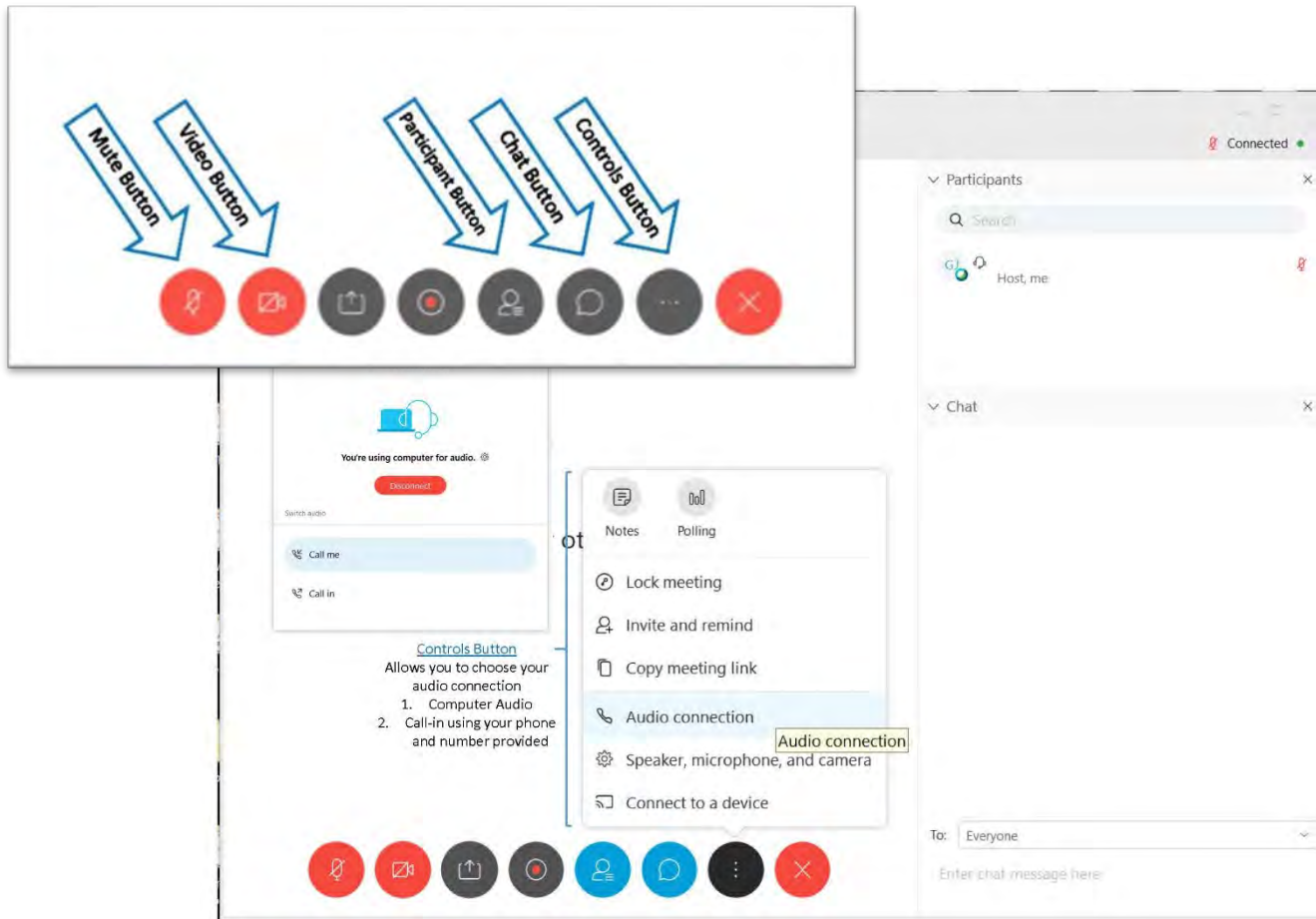
June 24 at 3:00 p.m.



Limestone Ridge Project Community Representative Forum Virtual Meeting

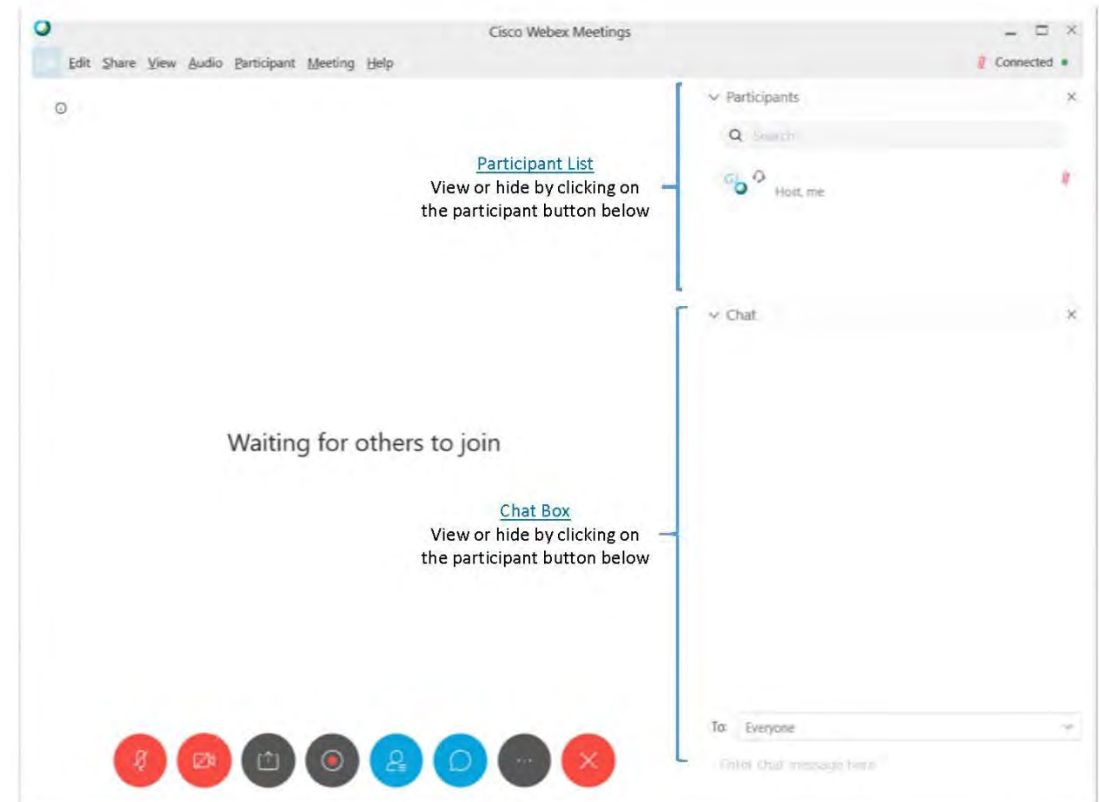
Welcome! If you are new to Webex, please take note of some of the functions below.
Also, please call **612.422.8853** if you are having issues logging in.

Function buttons allow you to connect to audio and more.



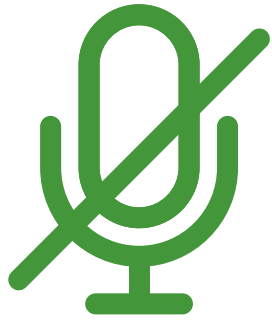
This screenshot shows the bottom toolbar of the Webex interface. Five blue arrows point to specific buttons: 'Mute Button' (red microphone icon), 'Video Button' (red video camera icon), 'Participant Button' (blue person icon), 'Chat Button' (blue speech bubble icon), and 'Controls Button' (blue three-dot menu icon). Below the toolbar, a callout box for the 'Controls Button' lists options: 'Notes', 'Polling', 'Lock meeting', 'Invite and remind', 'Copy meeting link', 'Audio connection' (highlighted), 'Speaker, microphone, and camera', and 'Connect to a device'. Another callout box shows the 'Audio connection' menu with options: 'Computer Audio' and 'Call-in using your phone and number provided'.

Clicking the Participant and Chat buttons allows you to view those lists.



This screenshot shows the Webex interface with the 'Participant' and 'Chat' lists visible. The 'Participant' list shows 'Host, me' and a search bar. The 'Chat' list shows 'Waiting for others to join' and a search bar. Callouts point to the 'Participant List' and 'Chat Box' with the text: 'View or hide by clicking on the participant button below'.

Participant Functions



Your line is currently muted, and can be unmuted during comments or discussion.



Questions/comments can be submitted via the control panel at any time throughout the webinar.



Please raise your hand to ask a question or comment via the control panel and we will unmute your line.



SAFETY MOMENT

Stay hydrated as the weather heats up



Agenda



Safety Moment ✓



Engagement



Introductions



Q&A



Project Overview



Study Area Map Input Opportunities



Integrated Routing Process



Wrap-up

Presenters

Tracy Dencker

Ameren Project
Manager



Dan Schmidt

Routing
Consultant



Gabe Goldsmith

Ameren Stakeholder
Relations



Ameren Support Project Staff



Carmen Bruns

Transmission Line
Design Engineer



Matt Killebrew

Transmission Construction
Manager



Craig Hiser

Transmission Real Estate
Supervisor



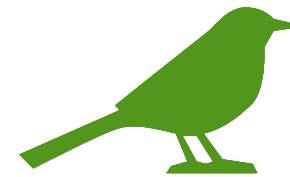
Ross Hohlt

Consulting Engineer
Transmission Policy



Mary Hetz

Transmission Vegetation
Management Manager

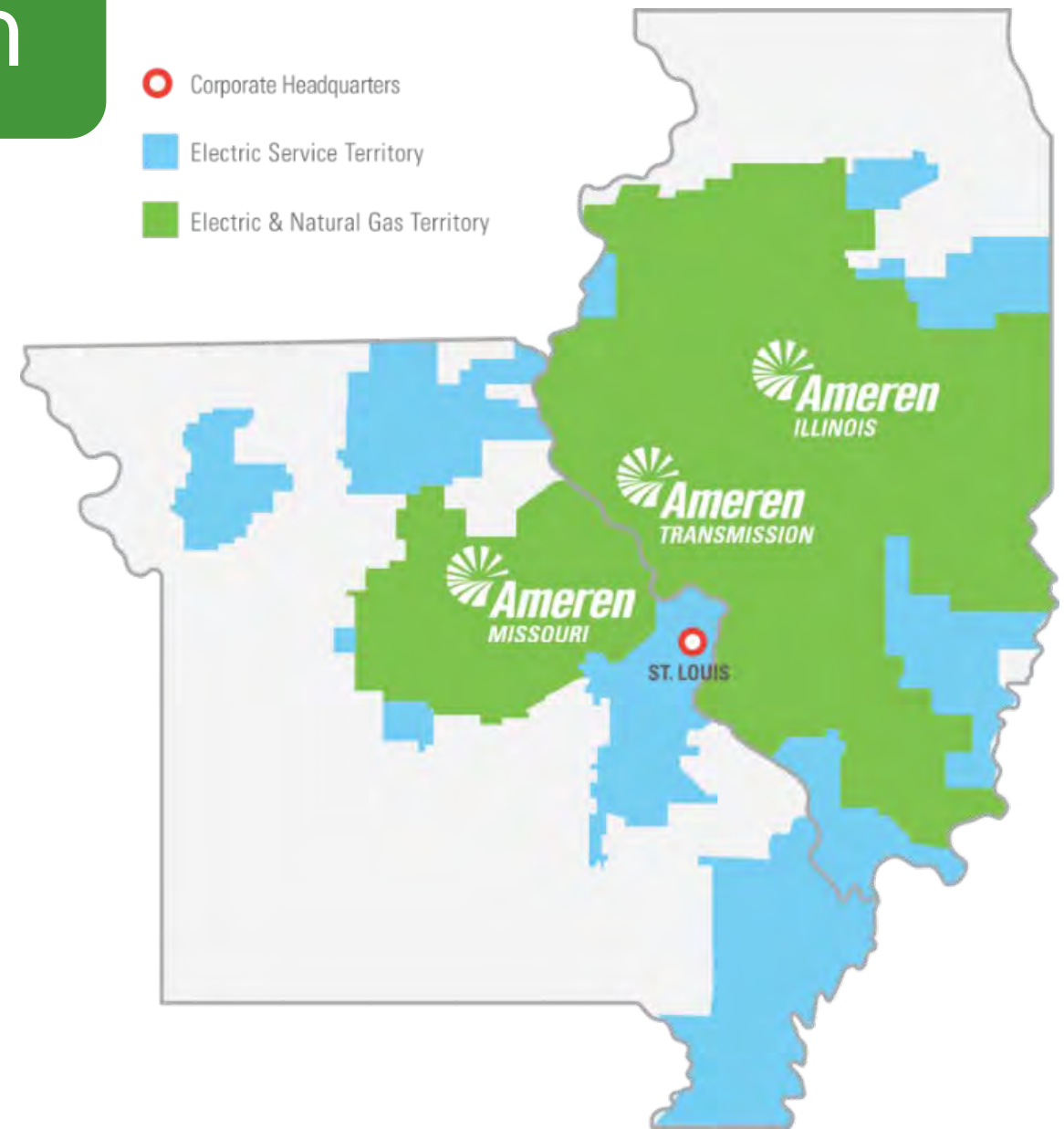


Kenny Lynn

Consulting Environmental
Scientist

Transmission at Ameren

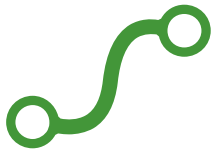
- Electric transmission businesses of Ameren Illinois and ATXI regulated by Federal Energy Regulatory Commission
- ATXI invests in regional multi-value projects
- Operates over 8,200 circuit miles of transmission



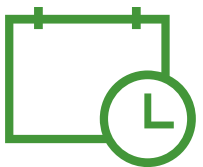
Limestone Ridge Project



Proposing to construct a new, approximately 12-15 mile 138 kV transmission line and associated facilities in Southeast Missouri.



The new line is planned to connect a new substation in Perry County to a new substation in Cape Girardeau County.



The project is proposed to be in service by December 2023.

Project Partners



Martine-Denise Long
Project Manager



Steve Elsea
Member Services Manager



Wabash Support Project Staff



Roger Varney
Real Estate
Manager



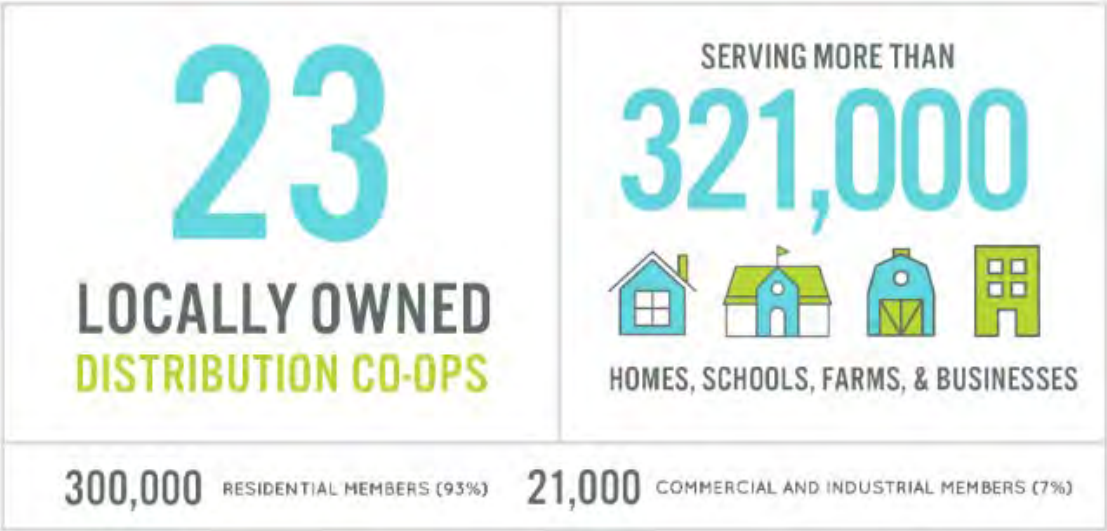
Greg Knuckles
Construction
Manager



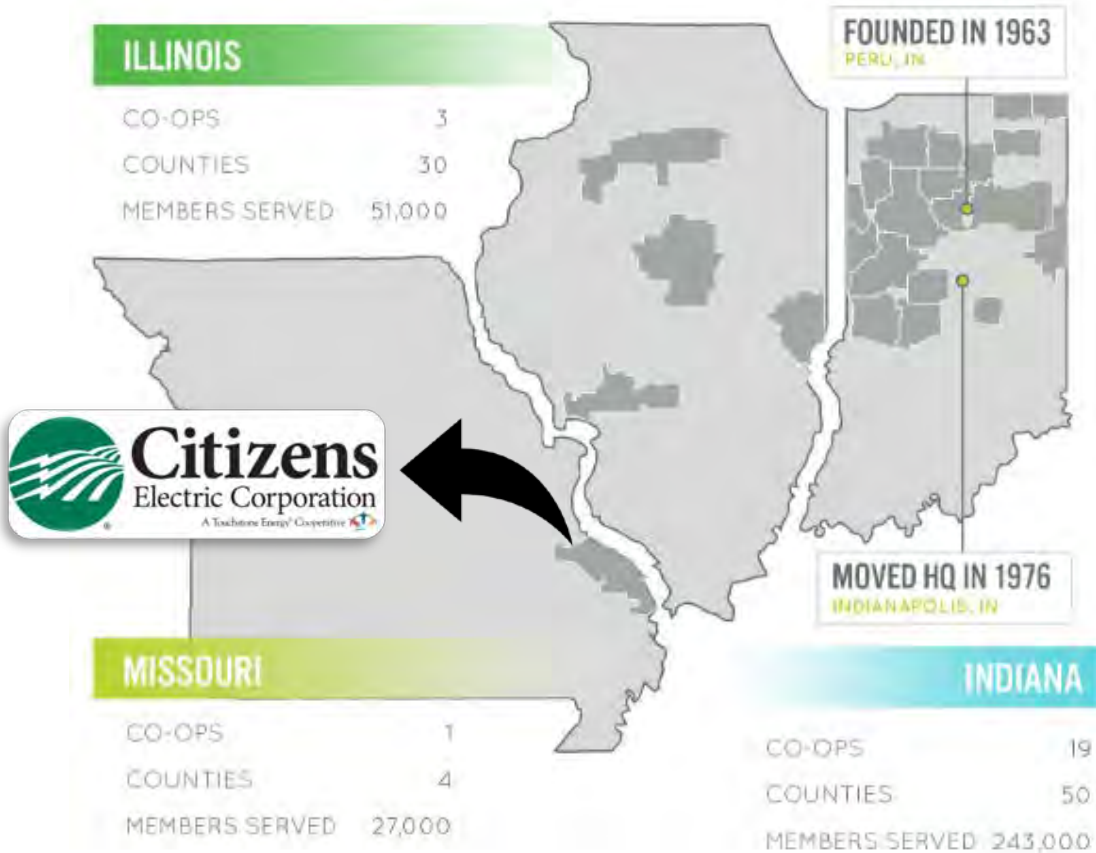
Garret Coffman
Consulting Design Engineer

Wabash Valley Power Alliance

WABASH VALLEY POWER IS A NOT-FOR-PROFIT ELECTRIC COOPERATIVE
AND WHOLESALE PROVIDER OF ELECTRICITY TO OUR MEMBERS:



17TH LARGEST GENERATION AND TRANSMISSION COOPERATIVE
IN AMERICA



Limestone Ridge Project

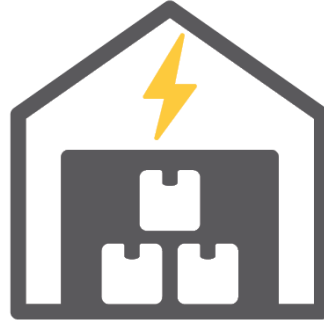
- Proposing to construct a new 138kV substation owned by Wabash Valley Power Alliance, which will be maintained and operated by Citizens Electric Corporation.
- Expansion and modifications to two existing WVPA-owned substations also maintained and operated by CEC.
- The project is proposed to be in service by December 2023.



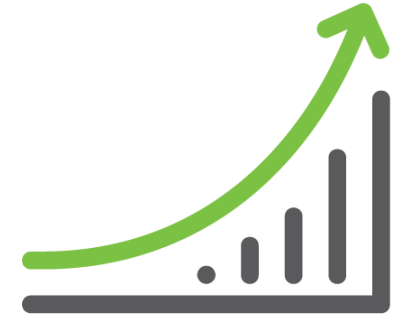
Project Need



- Improve energy reliability for local homes and businesses

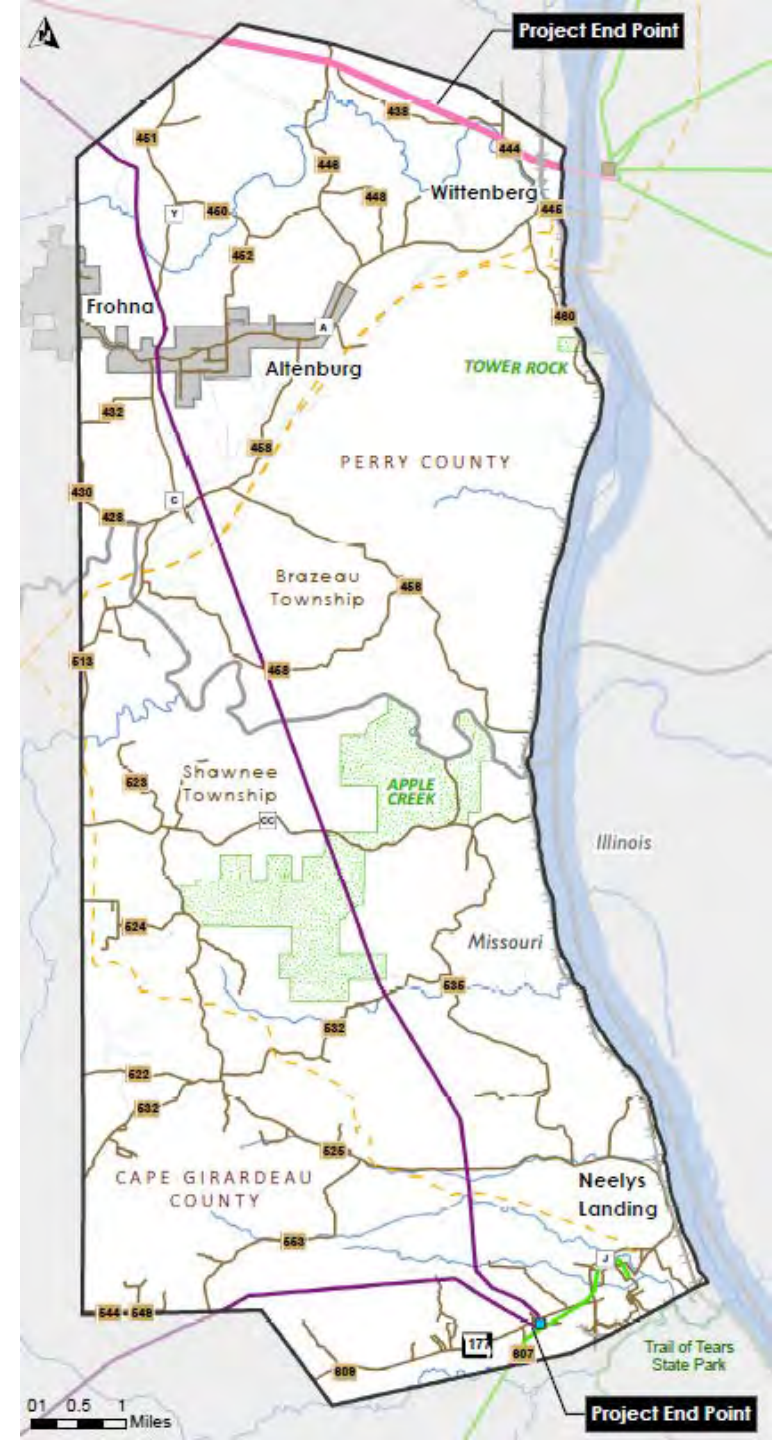


- Provide additional energy to local manufacturing facilities

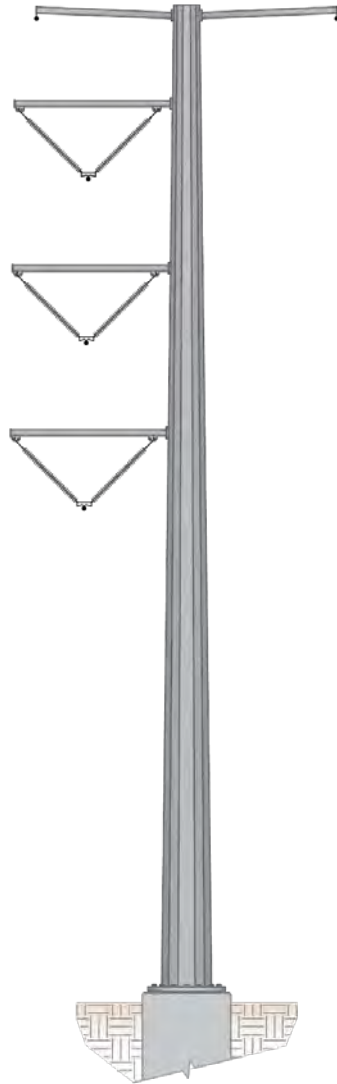


- Support continued area economic growth

Study Area Map



Structures

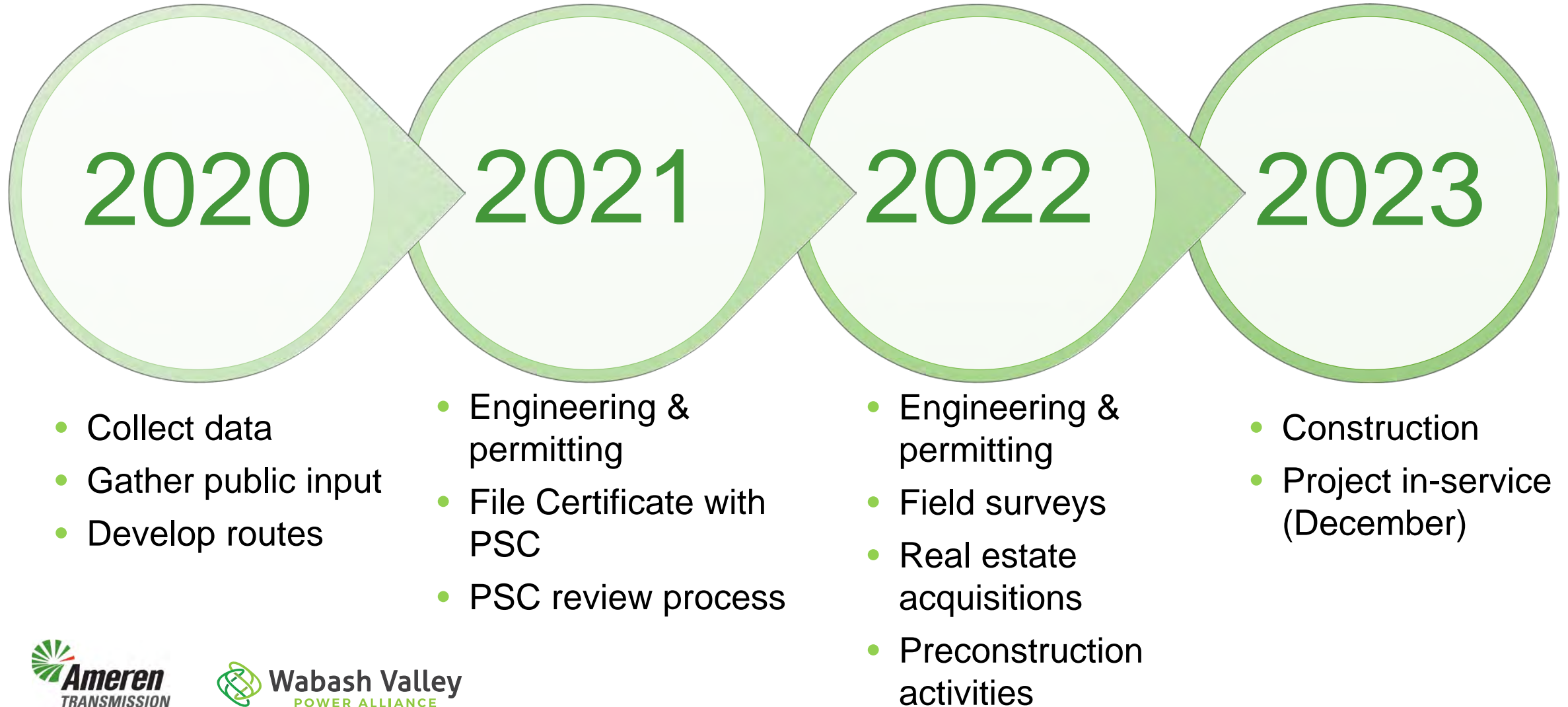


Typical 138kV Steel Monopole Structures*

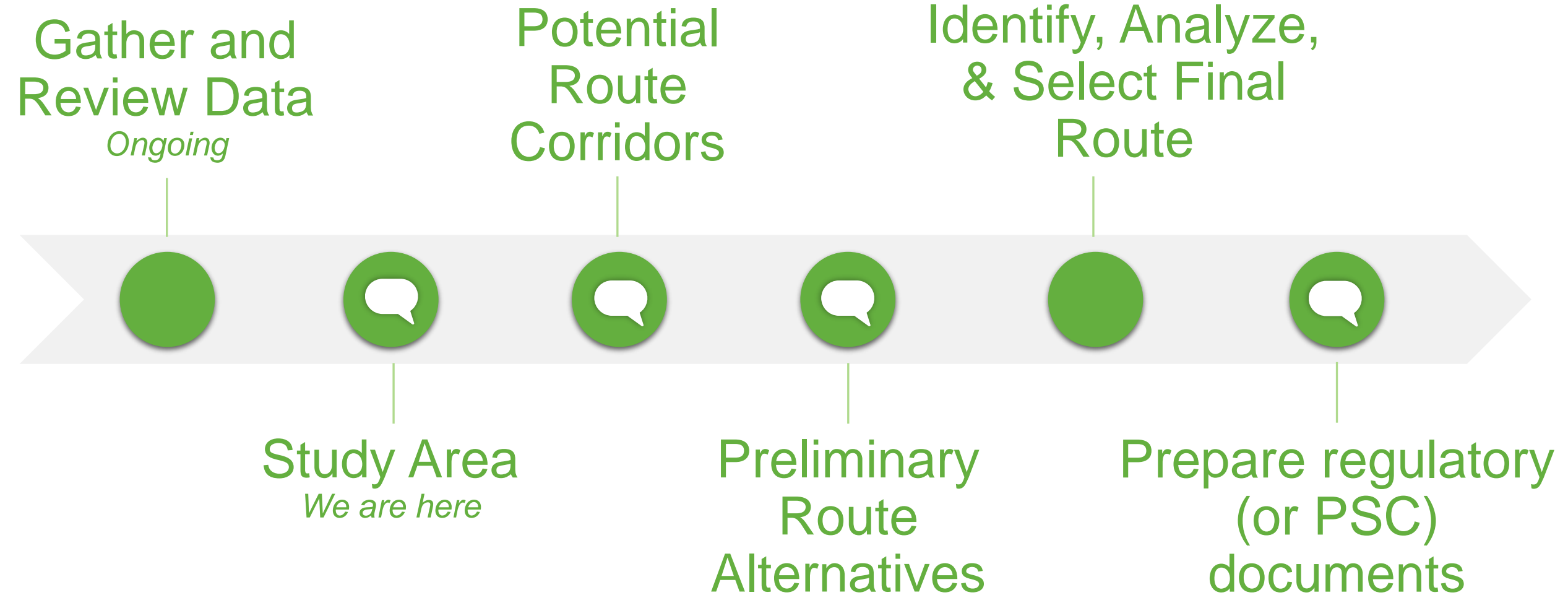
- Height: 100 - 160 ft
- Span: 800 - 1,000 ft
- Structures/mile: 6 - 7
- Conductor clearance: 25 ft (minimum)
- Drilled pier foundation: 7 - 12 ft
- Easement width: 125 ft

*138kV with the potential of a future 345kV circuit







Anticipated Schedule

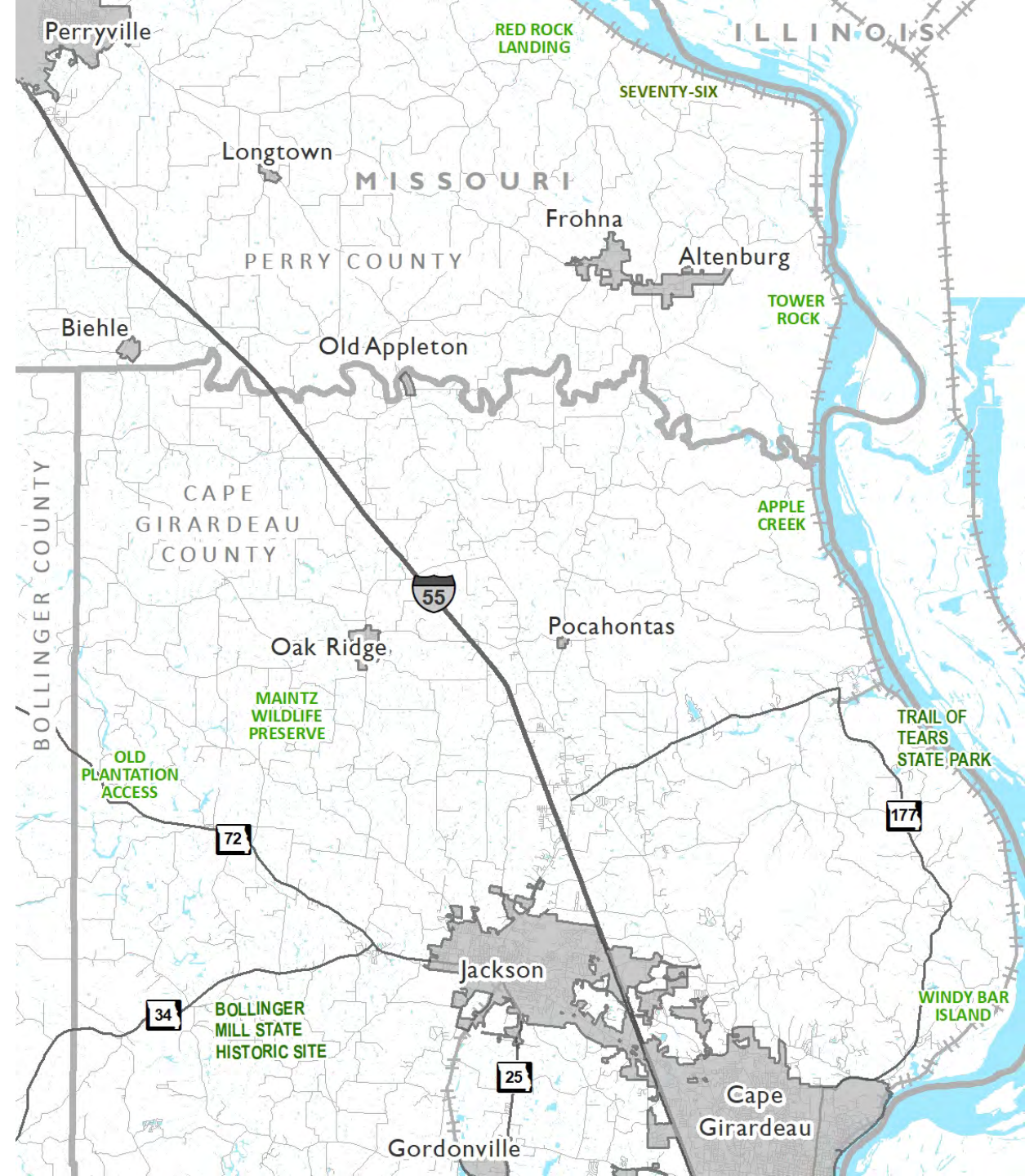


Routing Process & Stakeholder Outreach



Data Collection

-  Study Area
-  Ameren Transmission Lines
-  Wabash Transmission Lines
-  Wabash Distribution Lines
-  Wabash Substation
-  Power Plant
-  County
-  City
-  MO Conservation Land
-  MO DNR Land
-  USFWS Land
-  NCED Easements
-  National Historic Trails
-  Wetlands and Water
-  Flood Zone
-  Tree Canopy
-  Road
-  Railroad
-  Pipeline
-  Home and Outbuildings
-  Church or Cemetery
-  Communication Tower



Routing Criteria

Our goal is to take advantage of Opportunities while understanding and minimizing impacts to Sensitivities and adhering to Technical Guidelines and Statutory Requirements.

Opportunities



Sensitivities



Technical Guidelines



Statutory Requirements



Routing Criteria

OPPORTUNITIES

Field Lines
Property Lines
Section Lines
Roads
Utility Corridors

SENSITIVITIES

Agricultural conflicts	Mines/Quarries
Airports/VOR	Nature Preserves
Cemeteries	Pipelines*
Communication Towers	Railroads*
Conservation Areas	Religious Facilities
Planned Development	Residences
Floodplains	Scenic Highways
Forest	Schools/Daycares
Hospitals	Streams/Wetlands
Karst Areas	Wells
Levees	

**Linear features with additional precautions and studies needed*

Routing Criteria



Technical Guidelines:

- Minimize length
- Ensure adequate access for construction and maintenance activities
- Comply with horizontal and vertical clearance requirements
- Maintain required or sufficient setbacks from roads and highways
- Minimize angle structures
- Minimize crossing of existing transmission lines
- Minimize impractical construction requirements (e.g. steep slopes)
- Minimize non-standard designs
- Ensure safety and compatibility with existing infrastructure

Routing Criteria

Agency Coordination:

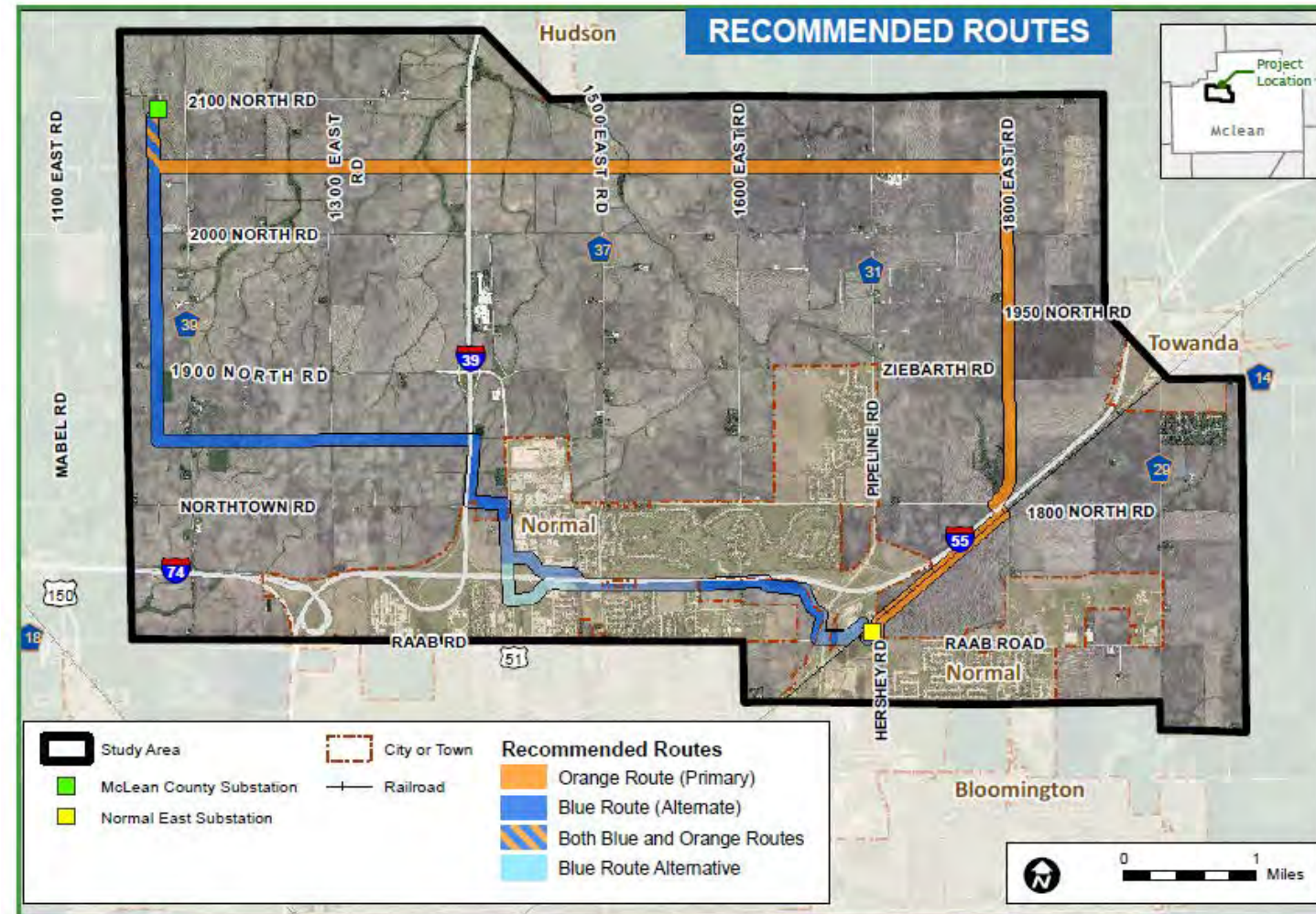
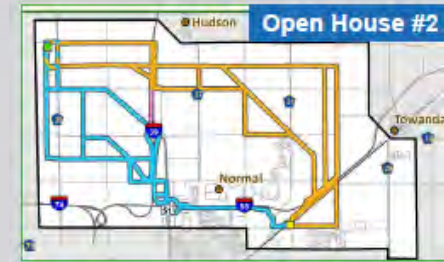
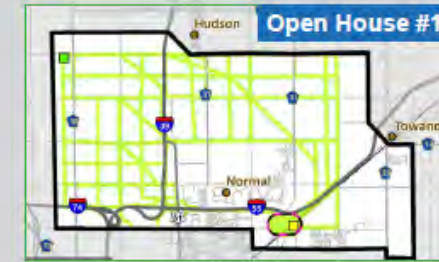
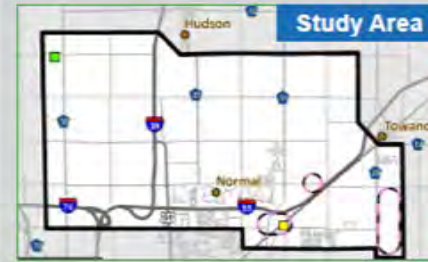


Example Project

Typical Routing Process Phases

- Study Area
- Route Corridors
- Preliminary Routes
- Recommended Routes

Routing Progress



Engagement Opportunities

Planned August virtual public engagement



Webex Meetings –
Wednesday, August 12 at 12:00 p.m. and 7:00 p.m.



Virtual open
house website



Online
comment map



Mailed materials,
as requested



We want to hear from you!

Answer the poll questions **on the right side** of your screen to tell us more about your community

Opportunities to Connect



LimestoneRidgeProject@ameren.com



www.LimestoneRidgeProject.com



573.232.3003



Limestone Ridge Project

45 S Minnesota

Cape Girardeau, MO 63703



Questions?

Interactive Mapping Discussion

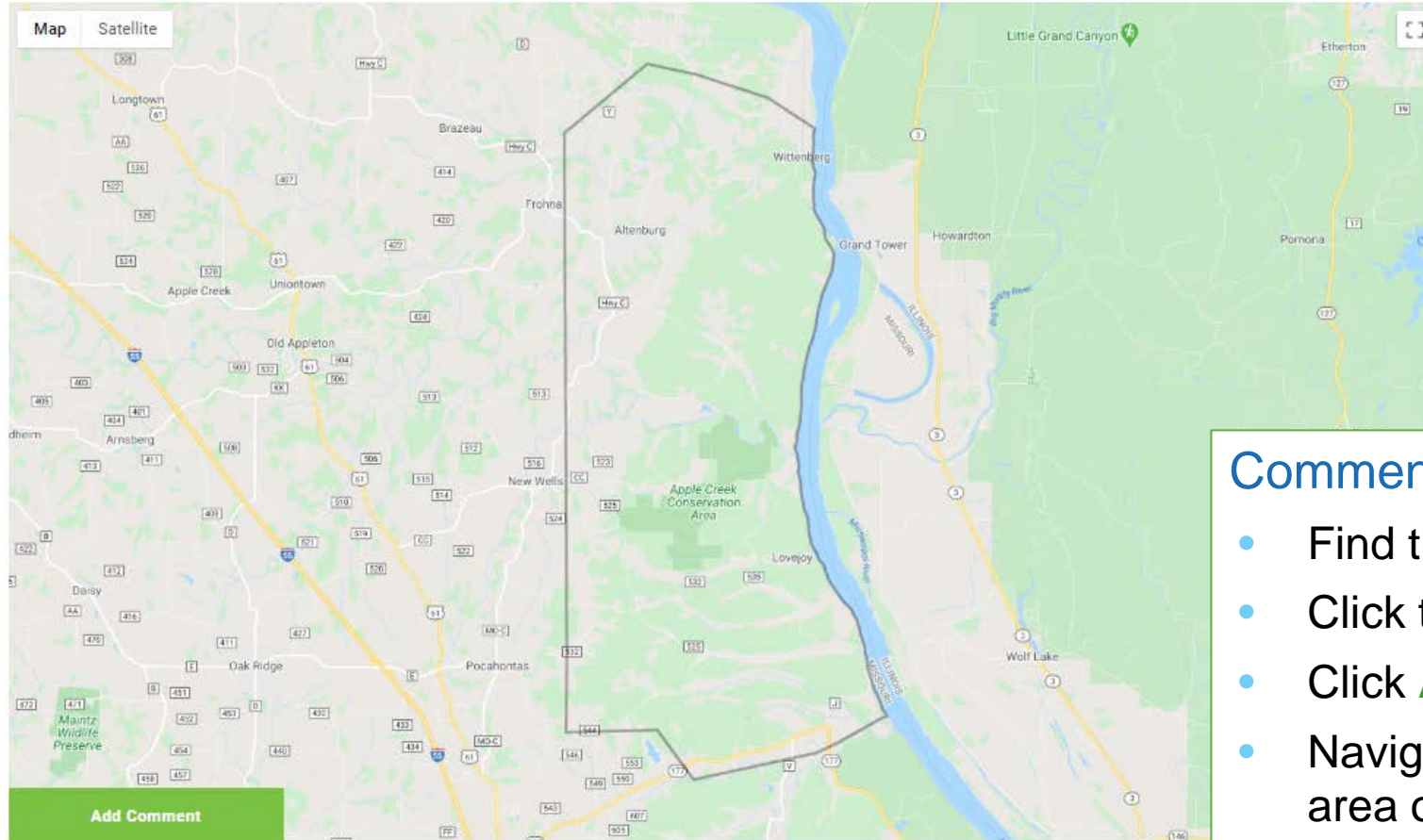


LIMESTONE RIDGE PROJECT

Ameren Transmission Company of Illinois (ATXI), in collaboration with Wabash Valley Power Alliance (WVPA), Citizens Electric Corporation and Ameren Missouri, is proposing to construct a new, approximately 12-mile 138 kV transmission line and state-of-the-art substations to improve energy reliability for local communities in Southeast Missouri. The new line will connect two new substations in Perry and Cape Girardeau Counties. The proposed in-service date for the project is December 2023.

📍 We are collecting information within the Project Study Area

Add a comment to provide our team information about your area.



Comment Map How-to Guide:

- Find the **link in the chat box**
- Click the link to open the map
- Click **Add Comment**
- Navigate to a point on the map in the area of your comment
- Complete the text box
- Click **Submit**

Routing Criteria

OPPORTUNITIES

Field Lines
Property Lines
Section Lines
Roads
Utility Corridors

SENSITIVITIES

Agricultural conflicts	Mines/Quarries
Airports/VOR	Nature Preserves
Cemeteries	Pipelines*
Communication Towers	Railroads*
Conservation Areas	Religious Facilities
Planned Development	Residences
Floodplains	Scenic Highways
Forest	Schools/Daycares
Hospitals	Streams/Wetlands
Karst Areas	Wells
Levees	

**Linear features with additional precautions and studies needed*

Leave us a note in
the **chat box** to
schedule a
follow-up meeting





LimestoneRidgeProject.com



LimestoneRidgeProject@Ameren.com



573. 232.3003

Thank You