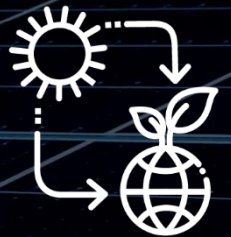




RENEWABLE SOLUTIONS

Phase #4



Lead the way to a sustainable energy future



- Subscription-based program
- Replace up to 100% of your total energy use with renewable sources
- Enrolled customers receive both renewable energy & Renewable Energy Certificates (bundled)

Predictable Pricing



- Price certainty
 - Pre-determined for the 15-year program term
- No market risk
 - Not tied to the energy market like a VPPA

Simple, Easy Administration



- RSP Credits and Charges are included on your standard monthly energy statement
- Renewable Energy Certificates (RECs) will be tabulated monthly, included on monthly energy statement and retired in your name semi-annually

No Upfront Capital Investment



- No negotiations with developers
- No operations or maintenance
- No additional administrative work

Keep Your Clean Commitment



- Supports your sustainability goals
- Reduce your carbon footprint
- Lower local emissions
- Be good stewards of the Missouri environment
- Support the renewable energy market and jobs
- Demonstrates you use clean energy, to your shareholders, customers, community and employees

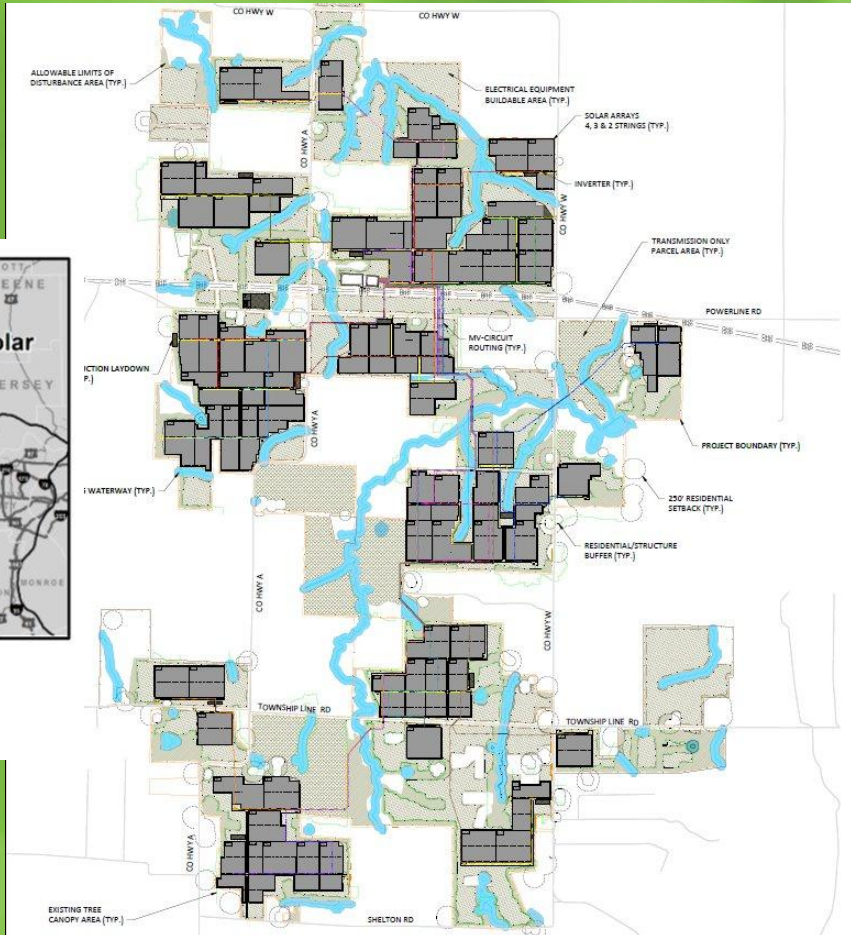
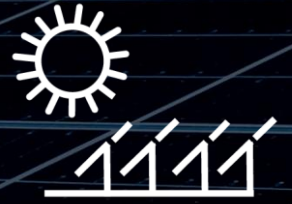
Supporting Renewable Resources



- Phase #1 – 150MW Boomtown – fully subscribed in 2022
- Phase #2 – 150MW Cass – fully subscribed in 2024
- Phase #3 – fully subscribed in 2025
 - 50 MW Vandalia, MO
 - 50 MW Bowling Green, MO
- Phase 4 - 300 MW Split Rail – Warren Co, MO
- Connected to the Ameren transmission grid and MISO



Split Rail Solar Energy Center



*Based on P50 values and Ameren Missouri's average kWh per month
**Generated from EPA's Greenhouse Gas Equivalent Calculator.

- Will be the largest solar energy center in Ameren's portfolio upon completion
- 300 MW utility scale solar energy center
- 646,080 MWh expected energy production
- 24.58% Calculated Expected Net Capacity Factor
- Approximately 685,400 solar panels
- Provides the energy needs for about 53,000 homes a year* **
- 423,150 Metric Tons of CO2 emissions saved annually* **
- Leverages least-cost new generation to help rates stay affordable
- Invests significantly in the local economy, with emphasis on local construction and maintenance resources when possible
- Project site is on approximately 4,700 acres of land under development leases near Warrenton, Warren County, Missouri
- July 2024: Start of site construction
- June 2026: Started providing clean energy to the grid



Enrollment Process



- Fixed price enrollment
- Submit your enrollment level up to 100% of your annual usage
- You will receive your entire requested amount
- No proration due to excess customer demand.

Bill Impact Calculator



- Provides financial impact of various levels of subscription to support your selected participation level
- Results are based upon your specific annual usage information

Our program vs. Alternative Options



| | Long Term Price Certainty | REC Ownership | No additional administrative burden | No capital investment | Physical Energy Delivery | Local Economic and Health Impact | Accelerates Missouri's clean energy transition |
|---|---------------------------|---------------|-------------------------------------|-----------------------|--------------------------|----------------------------------|--|
| Ameren Missouri Program Renewable Solutions | ✓ | ✓ | ✓ | ✓ | ✓ | ✓ | ✓ |
| Virtual Power Purchase Agreement | ✗ | ✓ | ✗ | ✓ | ✗ | ✗ | ✗ |
| Self-Built / On-site Renewables | ✓ | ✓ | ✗ | ✗ | ✓ | ✓ | ✗ |
| Renewable Energy Credits | ✗ | ✓ | ✗ | ✓ | ✗ | ✗ | ✗ |

Considering Renewables? The choice is clear.

Your Next Steps to Support Clean Energy



- Contact your Ameren Missouri Key Account Executive or complete the Interest Form on the website to receive more information
- Review RSP agreement and tariff sheets
- Identify accounts to be included in RSP
- Review your Bill Impact Calculator to determine financial impact
- Determine your subscription level and to enroll in the Renewable Solutions Program