

Customer-Owned Solar FAQ

Why does my bill sometimes reference “Summer” and “Non-Summer”?

Your rates change during certain times of the year. Our non-summer months are between October 1 and May 31. The summer months are between June 1 to September 30.

I’m on Power Smart Pricing or Real Time Pricing — why doesn’t my bill look like the sample bills?

If you receive supply service under an hourly rate, like Rider PSP for Power Smart Pricing or Rider RTP for Real Time Pricing, the netting of supply and transmission charges is calculated each hour.

How can I have excess generation and need to pull energy from the grid?

There were times of day or night in which your generator did not produce all the energy your home needed and required energy from the grid. There were other times, your generator produced more energy than your home needed and sent the excess generation out to the grid.

How will my monthly Budget Billing payment amount be affected?

Budget Billing is designed to provide you with certainty and consistency, so there won’t be any immediate change to your monthly payment amount. However, if your monthly electric charges decrease due to the output of your generator, your monthly Budget Billing payment amount will be adjusted in future months to reflect those reductions. Adjustments occur every four months to ensure that your payments reflect your usage of energy. To sign up for Budget Billing, visit AmerenIllinois.com/Budget.



CPR 136 REV 8/25 WF589150

Understanding Your Bill



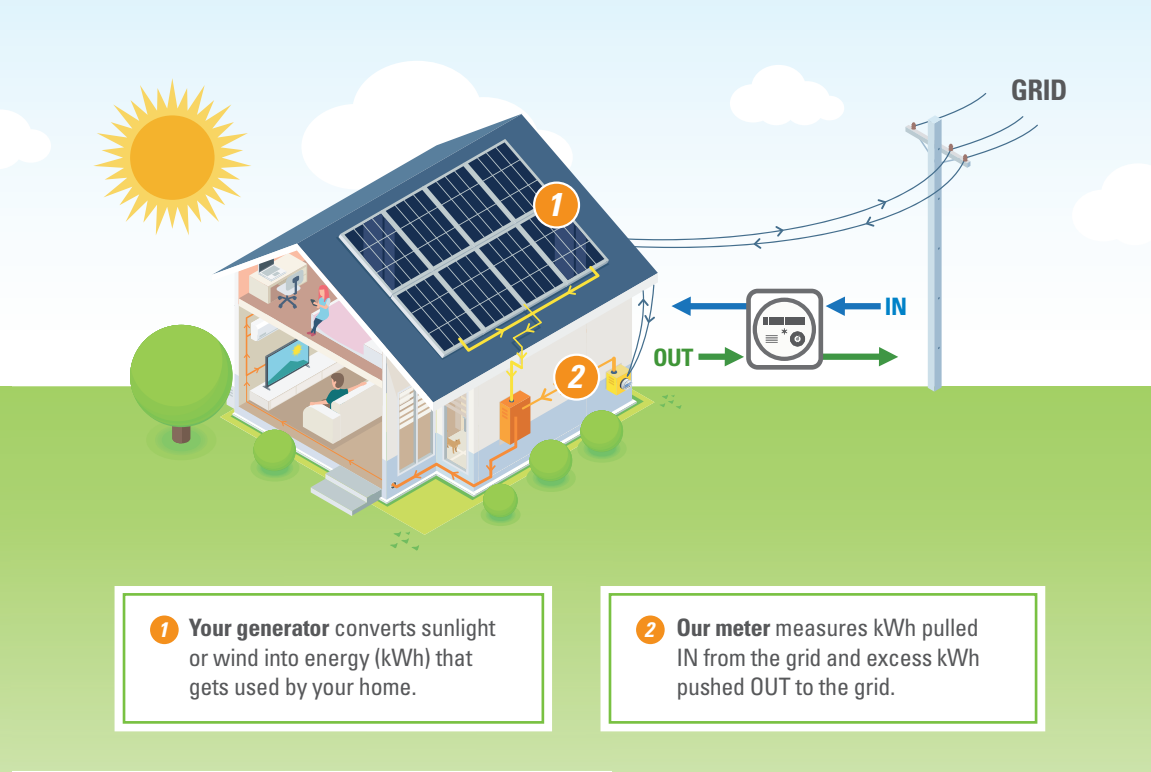
Customer-Owned Solar

On-Site: Active Before Jan. 1, 2025

As a residential or small commercial customer who generates energy using solar, you benefit from less recorded usage at your meter, which lowers your bill. You also benefit by “banking” any excess generation that you do not use.

The two sample bills in this document will help you understand how the benefits are calculated on your monthly bill. Your Ameren meter measures the energy flowing IN to your home and OUT to the Ameren Illinois grid. The flow of energy determines how your monthly bill is calculated.

To learn more about customer-owned solar, visit AmerenIllinois.com/Renewables.



AmerenIllinois.com/MyBill

Sample Bill 1

Generator produces LESS energy than the home or business uses.

kWh
IN

This example shows that you do not have any excess generation this month and the “Delivery/Supply Carryover kWh” will show zero.

- 1 **Start here.** This is the total usage we measured this month. Think of it as kWh “in.” This is energy usage pulled “in” from the grid.

2 **Then go here.** This is the total excess kWh sent to the grid. Think of it as kWh “out.” Your generator produced more than this, but that electricity was used by your home or business and never made it “out.”

3 The “Delivery/Supply Net Billable kWh” usage is determined by subtracting your “On-Site Excess Gen kWh” and the “Delivery/Supply Prior Carryover” from the “Total kWh.” (585-317-211=57) Your Distribution Delivery Charge reflects the “Delivery Net Billable kWh.”

4 Here is your **total net usage** for the month (excludes carryover generation). This is the “Total kWh” minus “On-Site Excess Gen kWh.” (585–317=268) This is the kWh you would pay for if you did not have “Delivery/Supply Prior Carryover” from a previous month.

5 **But wait!** You had usage in your “bank” — “Delivery/Supply Prior Carryover,” from a previous month when you produced more than you used.

Usage Summary

Total kWh 1	585.0000	Summer kWh	585.0000
On-Site Excess Gen kWh 2	-317.0000	Delivery Net Total kWh 4	268.0000
Delivery Prior Carryover	-211.0000	Delivery Net Billable kWh 3	57.0000
Delivery Carryover kWh	0.0000	Del Net Summer kWh	57.0000
Supply Net Total kWh	268.0000	Supply Prior Carryover 5	-211.0000
Supply Net Billable kWh 3	57.0000	Supply Carryover kWh	0.0000
Supply Net Summer kWh	57.0000		

- 6 Customer and meter charges below are not changed by the kWh you use each month.

Electric Delivery

CHARGE DESCRIPTION	USAGE	UNIT	RATE	CHARGE
Customer Charge				\$6.83
Meter Charge				\$5.32
Distribution Delivery Charge Summer 3	57.00	kWh	@ \$ 0.07477000	\$4.26
Electric Deferred Income Tax Adjustment	\$56.56	@	-2.190000%	\$-1.24
Delivery Service Cost Adjustment	\$56.56	@	12.860000%	\$7.27
Electric Delivery				\$22.44

- 7 Your **Electric Supply charges** below show your “Total kWh” minus your “On-Site Excess Gen kWh” and any banked “Supply Prior Carryover.” (585-317-211=57)

Electric Supply

Purchased Electric Summer	57.00	kWh	@ \$ 0.09706000	\$5.53
Purchased Electricity Adjustment	57.00	kWh	@ \$-0.00270000	\$-0.15
Supply Cost Adjustment	57.00	kWh	@ \$ 0.00210000	\$0.12
Transmission Service Charge	57.00	kWh	@ \$ 0.02264000	\$1.29
Electric Supply				\$6.79

State and Local Taxes and Other Mandated Charges

CHARGE DESCRIPTION	USAGE	UNIT	RATE	CHARGE
Customer Generation Charge				\$0.16
Clean Energy Assistance Charge	57.00	kWh	@ \$ 0.00177000	\$0.10
Renewable Energy Adjustment*	57.00	kWh	@ \$ 0.00458000	\$0.26
EDT Cost Recovery	57.00	kWh	@ \$ 0.00125500	\$0.07
Energy Efficiency Programs Charge	57.00	kWh	@ \$ 0.00559000	\$0.32
Energy Transition Assistance Charge*	57.00	kWh	@ \$ 0.00072000	\$0.04
Illinois State Electricity Excise Tax				\$0.19
Total Taxes and Other Charges				\$1.14

Sample Bill 2

Generator produces MORE energy than the home or business uses.

kWh
OUT

This example shows that you have excess generation this month and the “Delivery/Supply Carryover kWh” will show the excess amount in your bank next month.

- 1 **Start here.** This is the total usage we measured this month. Think of it as kWh “in.” This is energy usage pulled “in” from the grid.

2 **Then go here.** This is the total excess kWh sent to the grid. Think of it as kWh “out.” Your generator produced more than this, but that electricity was used by your home or business and never made it “out.”

3 **But wait!** You had usage in your “bank” — “Delivery/Supply Prior Carryover” from a previous month when you produced more than you used.

4 The “Delivery/Supply Carryover kWh” shows what is remaining in **next month’s “bank.”** To calculate, add your “On-Site Excess Gen kWh” to your “Supply Prior Carryover” kWh and subtract your “Total kWh.” (1,039+1,393-835=1,597)

5 The “Delivery/Supply Net Billable kWh” **equals zero** because your “On-Site Excess Gen kWh” exceeded the “Total kWh” that you pulled in from the grid this month.

Usage Summary

Total kWh 1	835.0000	Summer kWh	835.0000
On-Site Excess Gen kWh 2	-1039.0000	Delivery Net Total kWh	-204.0000
Delivery Prior Carryover	-1393.0000	Delivery Net Billable kWh 5	0.0000
Delivery Carryover kWh 4	-1597.0000	Supply Net Total kWh	-204.0000
Supply Prior Carryover 3	-1393.0000	Supply Net Billable kWh 5	0.0000
Supply Carryover kWh 4	-1597.0000		

- 6 Customer and meter charges below are not changed by the kWh you use each month.

Electric Delivery

CHARGE DESCRIPTION	USAGE	UNIT	RATE	CHARGE
Customer Charge				\$6.83
Meter Charge				\$5.32
Electric Deferred Income Tax Adjustment	\$75.57	@	-2.190000%	\$-1.65
Delivery Service Cost Adjustment	\$75.57	@	12.860000%	\$9.72
Electric Delivery				\$20.22

Electric Supply

Purchased Electricity Adjustment	0.00	kWh	@ \$-0.00265398	\$0.00
Electric Supply				\$0.00

0 (zero) kWh times any supply charge equals no supply charge.

State and Local Taxes and Other Mandated Charges

Customer Generation Charge	\$0.16
Total Taxes and Other Charges	\$0.16