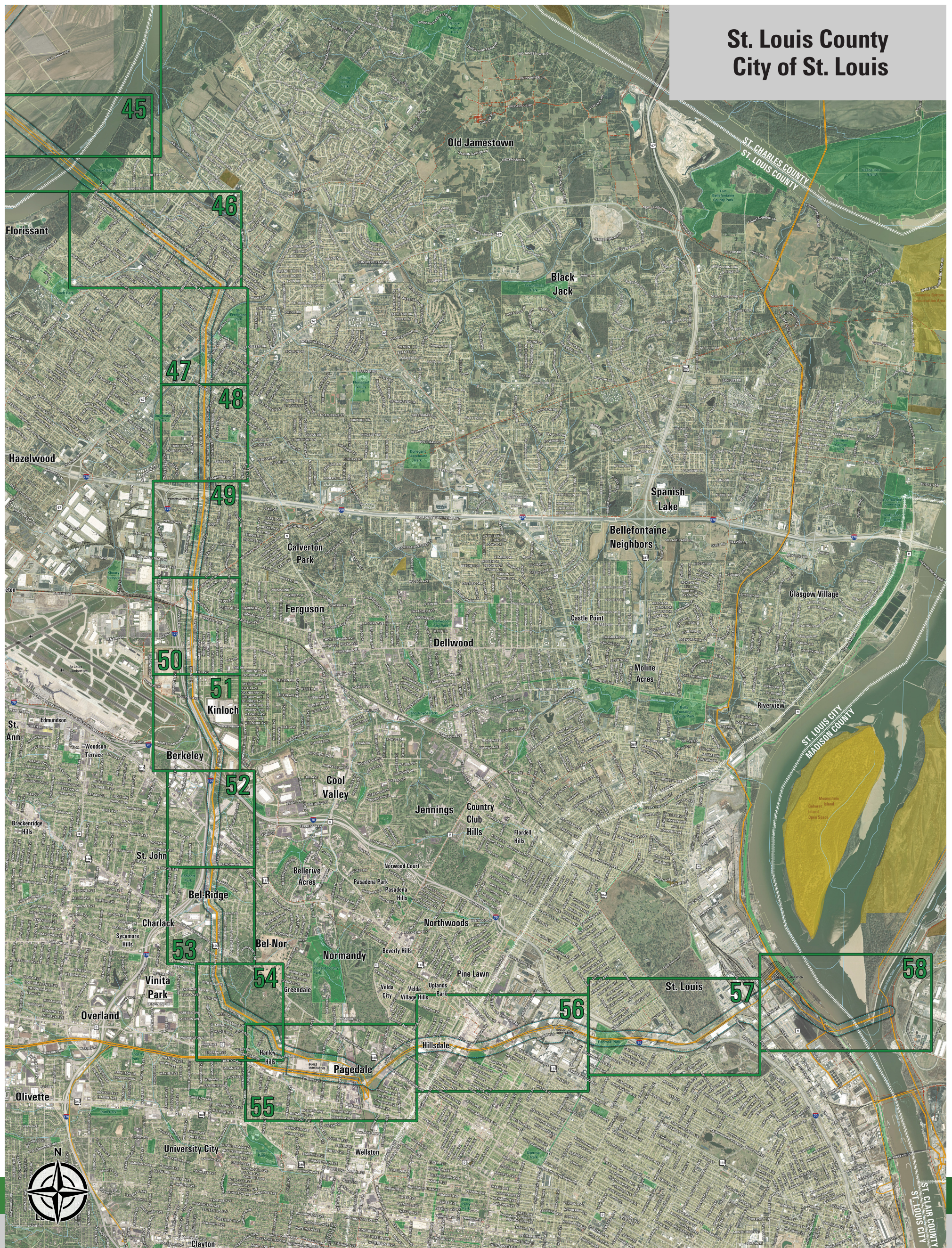


# The Eastern Missouri Grid Transformation Project – County Overview



**St. Louis County**  
**City of St. Louis**

## Eastern Missouri Grid

TRANFORMATION PROJECT



### LEGEND

- Routing Corridor
- Eliminated Routing Corridor
- Existing Transmission Line
- Airport Runway
- Pipeline
- River or Stream
- County Boundary
- Parcel Boundary
- State Land
- Local or Regional Government Land
- Private Park or Recreation Area
- Conservation Easement

### DISCLAIMER:

This map is for informational purposes only and depicts the general location of the proposed route options for the transmission line. It is not intended to be used for legal, engineering, or surveying purposes, and does not represent a final determination by Ameren Transmission Company of Illinois (ATXI) as to route selection. ATXI reserves the right to modify, adjust, or consider new or alternative routes contingent upon Commission approval. The information may be subject to change, and ATXI does not guarantee the accuracy of the data shown.