

Former Champaign Manufactured Gas Plant Site COMMUNITY FACT SHEET 2021 – 5th Street Remediation



Project Summary & Goal

Ameren Illinois is continuing to advance the environmental remediation of a former manufactured gas plant (MGP) in Champaign, Illinois, on North 5th Street (the Site). Ameren has enrolled this remediation Site in the Illinois Environmental Protection Agency (EPA) Site Remediation Program. This is a voluntary cleanup program administered by the Illinois EPA.

Ameren's goal for this Site and its surrounding area is to restore it to a condition that is considered acceptable by the Illinois EPA's environmental standards. The approach for meeting these environmental standards (principally by excavation of impacted soil) was evaluated using the results of previous Site investigation and remediation activities.

Recent investigations have identified the need for further remediation within North 5th Street. Additional excavation is planned within North 5th Street in cooperation with the Illinois EPA.

Timing

Starting in December 2021, environmental remediation of the soil at the site will be performed. Site remediation activities are anticipated to be completed within approximately 4 months.

Site activity may occur between the hours of 7 a.m.-7 p.m. Monday through Friday, with occasional work on weekends.

Other activities will include the continuation of quarterly groundwater sampling from monitoring wells located on and around the Site.

What to Expect

Noise – The remediation activities will include hammering and heavy equipment engines.

Site Traffic – To ensure the safety of the public and the Site workers, 5th Street will be closed between East Church Street and the Norfolk Southern Railroad crossing.

Crews will be on Site with heavy equipment such as excavators, vacuum trucks, bulldozers, and/or other similar equipment. In addition to drilling activities within the Site, crews will be excavating and loading material for transportation and disposal, surveying, and collecting environmental samples (soil, groundwater, and air monitoring).

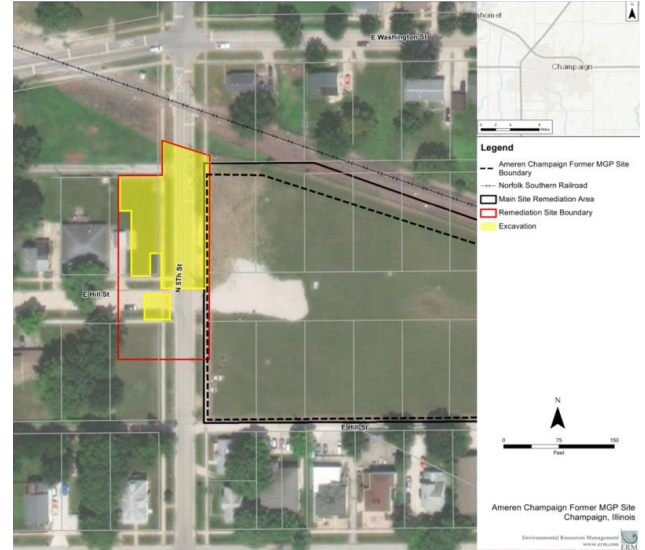
Ameren Contact Information

If you have questions about this project, please call Brian Bretsch at 618-343-8087 or email bbretsch@ameren.com. His mailing address is Ameren Illinois, 10 Executive Drive, Collinsville, IL 62234.

Work Area

The former MGP property is located on the east side of the City of Champaign and north of the University of Illinois at 308 North 5th Street. The Site is approximately 2.6 acres in size.

The Fall 2021 and Winter 2021-2022 activities will consist of ongoing quarterly groundwater monitoring at and around the Site, and a focused remediation within a portion of North 5th Street. The location of the work area is shown below:



Soil will be excavated in the locations shown to depths of up to 20 feet deep and to a pre-determined extent (based upon prior laboratory analyses).

Site History

Champaign Manufactured Gas Plant operations began in 1869 and ran to the early 1930s. Investigations completed by Ameren found impacted soil at the Site. Impacts down to 28 feet deep were addressed by soil excavation between 2009 and 2011. Deep impacts beyond the range of excavation and impacts along the south side of the Site were addressed by injection of oxidizing chemicals in 2013, and shallow impacts along North 5th Street corridor were excavated in 2016 and 2017. Groundwater monitoring has been ongoing.

Ameren has a website with additional information related to the Champaign Manufactured Gas Plant here:

<https://www.ameren.com/illinois/company/community/champaign-mgp-information>

Illinois EPA Contact Information

Should you want to discuss the Illinois EPA's oversight role, please contact Rodolfo Alanis at 847-553-9251 or email rodolfo.alanis@Illinois.gov. His mailing address is Office of Community Relations, Illinois EPA, and P.O. Box 19276, Springfield, IL 62794-9276.

IL Former Manufactured Gas Plant Site Questions & Answers



Q: What are manufactured gas plants?

A: Manufactured gas plants produced gas from coal or oil for lighting, heating and cooking during the era prior to the availability of natural gas from interstate pipelines. Manufactured gas plants were active in Illinois from about the mid-1800s until the 1940s.

Q: How was manufactured gas produced?

A: Manufactured gas was a man-made product produced from coal or oil. The gas was manufactured by the destructive distillation of coal and oil. Destructive distillation is the decomposing of a material by heating in the absence of air (as opposed to burning), followed by recovery of products. The gas that was produced was stored on site in large cylindrical tanks, known as gas holders, before distribution to the community for heating, lighting and cooking.

Q: What were the by-products and residuals generated by the operation of manufactured gas plants?

A: As with many industrial processes, Gas production typically created byproducts such as ashes, cinders, and coal tar. Coals tar was typically stored in underground structures at plant sites and were valuable as a fuel for heating at the manufactured gas plant but was also sold to others. When coal gas manufacturing plants were closed, the by-products and residues often remained on site in underground structures.

Q: What is coal tar?

A: Coal tars are thick black, brown, or red-brown opaque liquids or solid materials produced during the gas production process. Coals tar was typically stored in underground structures at plant sites were sold to the chemical industry for the manufacture of dyes, explosives, medicines, and perfumes and for use in creosote and road tar.

Q: What is the chemical makeup of the residuals?

A: Coal tar and other MGP related residuals can contain polycyclic aromatic hydrocarbons (PAHs), such as naphthalene; volatile organic compounds (VOCs), such as benzene and toluene; and metals and other inorganic materials. PAHs are commonly found in the environment, because they form as a result of combustion, such as from vehicle exhaust. VOCs are often found in fuels and solvents. VOCs evaporates easily into the open air but could exist for a long time underground. More Information about these compounds is available from the federal Agency for Toxic Substances and Disease Registry (ATSDR) website at: <https://www.atsdr.cdc.gov/> .

Q: How have the residuals impacted the environment?

A: Residuals, including tar, were found both on site and in an area adjacent to the former MGP sites. PAHs and VOCs associated with MGP-related residuals have been detected in soils and groundwater. The affected groundwater is not allowed to be used as a drinking or potable water supply.

Q: What are the risks to human health and am I at risk?

A: There are many different chemical compounds in gas plant residues. Some have been found to cause adverse health effects under certain occupational conditions involving frequent or daily exposure. However, these same compounds are commonly found at lower levels throughout the environment from other natural and man-made sources.

Soil and groundwater tests, air monitoring and other studies previously conducted at the sites have found that gas plant residues are below ground and there is little possibility for human contact except by digging. The community's drinking water is not affected by the MGP related residuals.

Q: What actions are Ameren Illinois Company taking to address MGP related residuals?

A: Ameren is proactively addressing environmental issues related to MGP sites to bring these sites in line with current environmental standards. We are in the process of investigating and remediating them, with oversight by, the Illinois Environmental Protection Agency (IEPA).

Q: What environmental agencies are involved with the sites?

A: Ameren is coordinating its activities at the manufactured gas plant site with the IEPA under its voluntary Site Remediation Program (SRP). The SRP establishes investigation and cleanup guidelines for sites based on risk-based, site-specific cleanup objectives designed to be protective of people and the environment. Through the SRP, the IEPA reviews and approves the cleanup work.

Q: Do I need to be concerned when site testing occurs?

A: Minimal disturbance of the area will occur. As necessary, monitoring will be performed during work activities to ensure that there is no harmful release of chemicals. Persons not involved with the study will be kept away from active work areas.

Q: What steps are being taken to minimize impacts from the site remediation on the surrounding community?

A: The work is being conducted in accordance with applicable state and local requirements. The truck routes are designed to minimize traffic in the residential neighborhoods near the site. People in the vicinity may notice odors similar to roofing tar or moth balls if tar is encountered during the work. Although odors may become noticeable at times, they are not considered a health risk. An air monitoring program is being used to confirm that there are no adverse impact to air quality in the area. The sites are secured with fencing and access is limited to properly trained workers. Work is conducted during weekday daytime hours.

Q: Does Ameren have any experience in dealing with manufactured gas plant sites?

A: Yes. Ameren has successful participation in the SRP resulting in regulatory closure at many MGP site in Illinois, primarily through the issuance of a No Further Remediation Letter by the Illinois EPA. The letter is filed with the county office that maintains property transfer records so that future landowners and others are aware that the site was previously cleaned up.