



# Power Smart Pricing

## Program Guide

# Table of Contents

<b>Welcome to Power Smart Pricing</b>	<b>3</b>
<b>Saving Energy and Money</b>	<b>4</b>
<b>Comparing Your Rate Options</b>	<b>8</b>
<b>Managing Costs With Power Smart Pricing</b>	<b>9</b>
<b>Monitoring Your Savings</b>	<b>10</b>
<b>Understanding Your Bill</b>	<b>13</b>

# Welcome to Power Smart Pricing

Ameren Illinois Power Smart Pricing is an hourly pricing program for residential electric customers. The price you pay for electricity will vary each hour based on actual market prices. Power Smart Pricing uses day-ahead prices, meaning the price for each hour is set the day before. By shifting some of your energy use to lower-priced hours, you can save money on your monthly bills.

Power Smart Pricing also helps reduce stress on the energy grid during high-demand times, improving service reliability and helping to reduce carbon emissions that contribute to climate change.

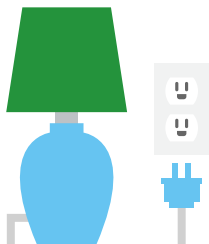
As a Power Smart Pricing participant, you'll have access to tools to help you manage costs whether you're at home or on the go.

These tools include High Price Alerts and additional information to help guide your residential energy decisions.

This guide provides an overview of Power Smart Pricing, tips on managing costs with Power Smart Pricing, and a detailed explanation of the line items that appear on participants' monthly energy bills.

# Saving Energy and Money

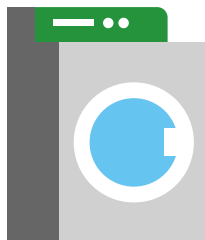
## It's Simple to Save on Power Smart Pricing



Take advantage of low energy prices that typically occur during nights and weekends.



Shift energy use away from higher-priced hours and you could save money.



We'll send you alerts when prices will be high, so you know when to save.



We'll send you monthly savings reports via email.

*High-price periods don't typically last more than a few hours. You can check day-ahead prices at [AmerenIllinois.com/PowerSmartPricing](http://AmerenIllinois.com/PowerSmartPricing).*

# Saving Energy and Money



## Hourly Market Prices

The Ameren Illinois Power Smart Pricing program gives you access to hourly market prices that are set by MISO – the Midcontinent Independent System Operator, Inc. These prices vary from hour to hour and day to day according to the actual market price of electricity. You can manage your costs with Power Smart Pricing by using appliances that consume a lot of energy during lower-priced hours and conserving energy when prices are higher.

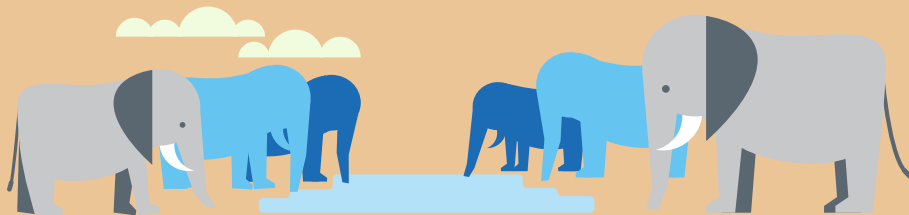
## Healthier Environment

By controlling and shifting your energy use to lower-priced hours, you'll not only save money, you'll also help reduce energy demand during peak times when the use of older, less efficient generation facilities is often needed. In this way, you'll help reduce the release of emissions that contribute to global climate change.

# Saving Energy and Money

Since 2007, Power Smart Pricing participants have saved:

**\$12 million and  
17 million kilowatt-hours**



Participants have helped prevent 15,012 metric tons of greenhouse gas emissions from entering the atmosphere. That's equivalent to the weight of 2,758 African Elephants.

It's also the amount of carbon captured by 19,605 acres of forest in a single year.



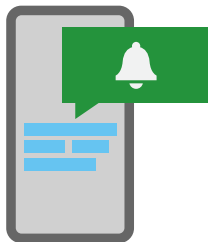
# Saving Energy and Money

## We're Here for You

The Power Smart Pricing program gives you personalized information, tools, and services to help you take control of your energy costs. As a participant, you'll receive:



Information and tips to help you reduce your energy costs.



Access to electricity price updates online and by phone so you can decide how and when to use energy.



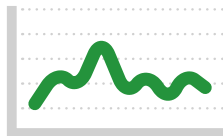
Online tools that help you understand your savings and usage as well as cool ways to save.



Support from program specialists who are just an email or phone call away.

# Comparing Your Rate Options

The main difference between Ameren Illinois' rates is how your energy supply is calculated.



## Power Smart Pricing

With Power Smart Pricing, the price you pay for energy varies each hour based on day-ahead market prices. Your bill will show the total cost for the energy you used, calculated using these hourly prices and your corresponding hourly energy use measured by your home's smart meter. Ameren Illinois does not mark up or profit from the price of electricity; you simply pay the market price.

Ameren Illinois is neutral to your electric supply choice and therefore does not recommend one supply option over another. We fully support and encourage you to explore all your options. Regardless of your choice, our commitment to delivering safe, reliable energy remains unchanged.



## Standard Flat Rate

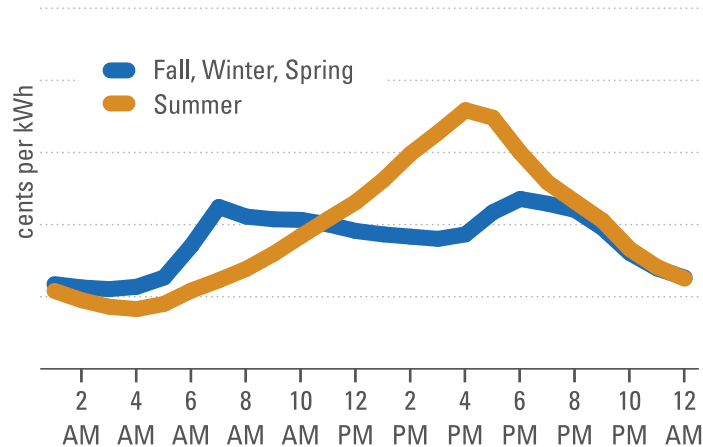
Many Ameren Illinois customers are on the Ameren Illinois Basic Generation Service default supply rate (BGS-1). With the standard flat rate, you pay a set price for your energy supply. This price varies by season and is adjusted periodically, but it does not change from hour to hour or day to day.



# Managing Costs With Power Smart Pricing

Hourly electricity prices typically change as the demand for energy changes; higher demand usually means higher hourly prices. You can manage your energy costs by taking simple actions to conserve energy during hours when prices are higher. Depending on weather and other conditions, some days will have higher prices than others. By familiarizing yourself with the price patterns, you can wisely manage your energy use and save money.

## Typical Seasonal Price Patterns\*



\* Based on average prices for January 2016 through December 2019. Non-summer months include October through May. Summer months include June through September.

### Summer Price Pattern

Prices typically fluctuate the most during the summer, with high temperatures and air conditioner use driving up demand for energy. To manage summer energy costs, conserve energy from 1 PM to 5 PM on hot summer weekdays, when prices tend to be highest. Shift some of your use to lower-priced times such as mornings, nights, and weekends. Prices can be lower on cooler days.

### Fall, Winter, and Spring Price Patterns

Fall, winter, and spring prices are generally lower, and the price pattern is more stable. During these months, there tends to be a small increase from 6 AM to 10 AM and from 5 PM to 8 PM. Prices may increase when heat waves occur and some power plants are shut down for maintenance. Extreme weather can also result in higher energy demand for space heating.

# Monitoring Your Savings



## Checking Day-Ahead Prices

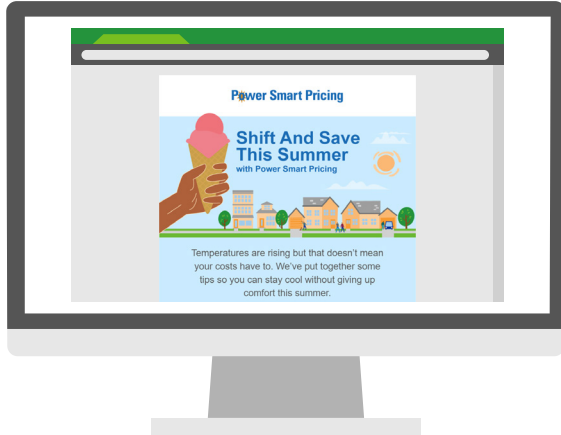
- Power Smart Pricing uses day-ahead hourly market electricity prices.
- Prices for the following day are available each evening after 5 PM.
- Check prices online at **AmerenIllinois.com/PowerSmartPricing** or by calling **1-888-596-5498**.

## High Price Alerts

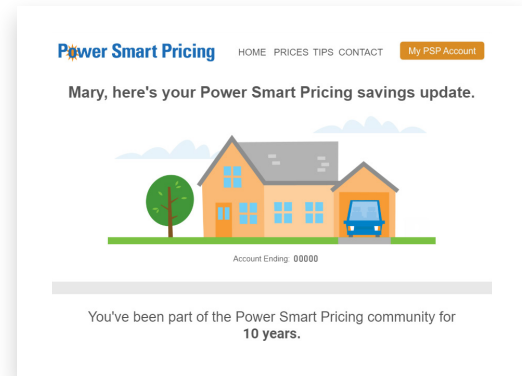
- To help manage your costs with Power Smart Pricing, you'll receive an alert the day before if hourly electricity prices will be 9 cents per kilowatt-hour or higher for any number of hours the next day.
- High Price Alerts are most likely to occur on hot summer days but can occur on any day of the year.
- You can receive alerts by email, text, or automated phone call. To update your alert preferences, visit your online profile or contact us at **1-888-596-5498** or **PowerSmartPricing@Ameren.com**.

# Monitoring Your Savings

## Emails and Newsletters



- As a Power Smart Pricing participant, you'll receive seasonal emails and newsletters containing program updates, price pattern information, and tips to help you save energy and money on Power Smart Pricing.




## Savings Updates

- Each month, after your bill is calculated, you'll receive an email comparing your costs on Power Smart Pricing with what you would have paid on the Ameren Illinois standard flat rate. You'll also receive an annual savings report via mail or email.
- Make sure we have your current email address on file so you don't miss out on these savings updates.

# Understanding Your Bill

Most of the charges are the same for both Power Smart Pricing participants and customers on the standard flat rate. All residential electric service bills include three main sections: Electric Delivery, Electric Supply, and Taxes and Other Fees. Here's an example of a Power Smart Pricing participant's bill and a breakdown of the line items that appear.

**A.** The **Electric Delivery** section is the same for Power Smart Pricing participants and customers on the standard flat rate, except for the \$2.25 Participation Charge that Power Smart Pricing participants pay to cover the program's dedicated customer support and monthly savings reports.



f

Twitter

AmerenIllinois.com

Customer Service 1.800.755.5000

Account Number

Customer Name

Service Address

0123456789

PAUL SMITH  
DEBORAH SMITH  
123 MAIN ST  
ANYWHERE, IL 61602-1400

Statement Issued

Amount Due

Due Date

02/07/2020

\$51.14

Feb 28, 2020

Payment Details

Payment Received

DATE

January 21, 2020

AMOUNT

\$64.34

Electric Service Residential Billing Detail - Rate Zone III

01/07/2020 - 02/05/2020 (29 days)

Electric Meter Read for 01/07/2020 - 02/05/2020 (29 days)

READ TYPE	METER NUMBER	CURRENT METER READ	PREVIOUS METER READ	READ DIFFERENCE	MULTIPLIER	USAGE
Total kWh	01234567	495.0000 Actual	0.0000 Actual	495.0000	1.0000	495.0000
Peak kW	01234567	3.7680 Actual	0.0000 Actual	3.7680	1.0000	3.7680

Usage Summary

Total kWh	495.0000	Non-Summer kWh	495.0000
Customer Dmd at System Pk	0.5736	System Loss Adj Factor	1.0877
Customer Coincident Peak	0.6239	DLF Adjusted Total kWh	534.0000
System Peak Date	01/21	System Peak Time	08:00

Rider PSP - Power Smart Pricing

CHARGE DESCRIPTION

USAGE UNIT

RATE

CHARGE

Customer Charge

\$8.47

Meter Charge

\$5.42

Distribution Delivery Charge Non-Summer

495.00 kWh

@ \$ 0.02909000

\$14.40

Power Smart Pricing Participation Charge

\$2.25

Electric Delivery

\$30.54

Electric Supply

RTP Supplier Charge Non-Summer 0-800 kWh

495.00 kWh

@ \$ 0.00055000

\$0.27

Purchased Electricity Adjustment

495.00 kWh

@ \$ 0.00074792

\$0.37

Day Ahead Energy Charge

\$11.86

Supply Cost Adjustment

495.00 kWh

@ \$ 0.00052000

\$0.25

Transmission Service Charge

18.10 kW-day

@ \$ 0.16252000

\$2.94

Electric Supply

\$14.95

Taxes and Other Fees

Clean Energy Assistance Charge

495.00 kWh

@ \$ 0.00176000

\$0.87

Renewable Energy Adjustment

495.00 kWh

@ \$ 0.00181000

\$0.90

EDT Cost Recovery

495.00 kWh

@ \$ 0.00121680

\$0.60

Electric Environmental Adjustment

495.00 kWh

@ \$ 0.00136280

\$0.67

Energy Efficiency Programs Charge

495.00 kWh

@ \$ 0.00198000

\$0.98

Illinois State Electricity Excise Tax

\$1.63

Total Tax Related Fees

\$5.65

Total Electric Charges

\$51.14

# Understanding Your Bill

## How Your Bill Differs

<b>Electric Supply</b>	RTP Supplier Charge Non-Summer 0-800 kWh	495.00 kWh	@ \$ 0.00055000	\$0.27
Amgen Illinois	Purchased Electricity Adjustment	495.00 kWh	@ \$ 0.00074792	\$0.37
RTP-1 Real Time Pricing	Day Ahead Energy Charge			\$11.86
	Supply Cost Adjustment	495.00 kWh	@ \$ 0.00052000	\$0.25
	Transmission Service Charge	18.10 kW-day	@ \$ 0.16252000	\$2.94
	<b>Electric Supply</b>			<b>\$14.95</b>

**B.** The **Electric Supply** section includes some line items that are different for Power Smart Pricing participants. The Purchased Electricity Adjustment and Supply Cost Adjustment rates are the same for all customers. All customers have a Transmission Service Charge, though it is calculated differently for Power Smart Pricing participants. Instead of a Purchased Electric Charge, Power Smart Pricing participants have an RTP Supplier Charge and a Day Ahead Energy Charge.

## How Your Bill Is the Same

<b>Taxes and Other Fees</b>	Clean Energy Assistance Charge	495.00 kWh	@ \$ 0.00176000	\$0.87
	Renewable Energy Adjustment	495.00 kWh	@ \$ 0.00181000	\$0.90
	EDT Cost Recovery	495.00 kWh	@ \$ 0.00121680	\$0.60
	Electric Environmental Adjustment	495.00 kWh	@ \$ 0.00136280	\$0.67
	Energy Efficiency Programs Charge	495.00 kWh	@ \$ 0.00198000	\$0.98
	Illinois State Electricity Excise Tax			\$1.63
	<b>Total Tax Related Fees</b>			<b>\$5.65</b>

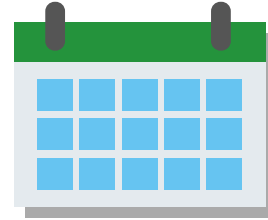
**C.** The **Taxes and Other Fees** section is the same for customers on Power Smart Pricing and those on the standard flat rate.

# Understanding Your Bill



## Billing Schedule

You will continue to receive your monthly energy bill from Ameren Illinois, and you will remain on the same billing schedule. Once your account bills for the first time on Power Smart Pricing, you can visit **[AmerenIllinois.com/PowerSmartPricing](https://www.AmerenIllinois.com/PowerSmartPricing)** to view more detailed information about your hourly energy use and costs.



## Program Duration

You can leave Power Smart Pricing at any time by contacting us or by signing up with a Retail Electricity Supplier (RES). However, we highly recommend you remain in the program for at least one year as the pricing pattern and your energy use change with the seasons. If you leave Power Smart Pricing, your account will be unable to rejoin an Ameren Illinois hourly rate for one year (12 billing cycles).

# Understanding Your Bill

## Answers to Your Questions About Specific Line Items for Energy Bill Charges

### **Q. What is the RTP Supplier Charge?**

**A.** The RTP Supplier Charge covers the additional capacity related services necessary for providing electricity with Power Smart Pricing. The RTP Supplier Charge rate changes between summer and non-summer months. October through May, it's only applied to the first 800 kilowatt-hours used each billing period. June through September, it's applied to all kilowatt-hours used in a billing period. You can reduce the impact of the RTP Supplier Charge by using energy efficiently throughout the year.

### **Q. What is the Day Ahead Energy Charge?**

**A.** The Day Ahead Energy Charge is the sum of your hourly energy use multiplied by the corresponding hourly prices. After your first bill on the program, you can log in to your account to view details about your hourly energy use. In addition to avoiding seasonal peak hours, High Price Alerts will make it easier to manage the Day Ahead Energy Charge portion of your bills.

### **Q. How is the Transmission Service Charge calculated?**

**A.** For customers on the standard flat rate, the Transmission Service Charge is based on total kilowatt-hours used in a billing period. For Power Smart Pricing participants, the charge is based on individual energy use during the highest system peak demand hour of the billing period, which typically occurs on hot summer afternoons between 1 PM to 5 PM and in the winter between 6 AM to 10 AM or 5 PM to 8 PM. Peak times vary in the spring and fall depending on the weather. You can reduce your Transmission Service Charge by using energy wisely when electricity demand and prices are high.

# Understanding Your Bill

## For More Information

Online: **AmerenIllinois.com/PowerSmartPricing**

Email: **PowerSmartPricing@Ameren.com**

Phone: **1-888-596-5498** (8 AM to 5 PM, Monday to Friday)

## Ameren Illinois

- For more information about your energy rate options, go to **Ameren.com/Illinois/Residential/Rates**. For questions about meters, meter reading, reporting outages, or billing, please contact Ameren Illinois at **1-800-755-5000**.
- Ameren Illinois Energy Efficiency Programs offer tips, discounts, and incentives that help you save energy and money. Visit **AmerenIllinoisSavings.com** or call **1-866-838-6918** to learn more.

## Go Paperless

To conserve resources, please share your email address to receive valuable program updates and monthly savings emails. If you would prefer to receive your program communications by mail, please let us know. How you choose to receive Power Smart Pricing program updates does not change how you receive your monthly Ameren Illinois bill.



