



## EDWARDSVILLE RELIABILITY ENHANCEMENT PROJECT

The purpose of the Edwardsville Reliability Enhancement Project is to modernize and strengthen the safety, integrity and reliability of Ameren Illinois' natural gas system, and to enhance operational flexibility to meet customer needs.

This project is one of hundreds Ameren Illinois is undertaking throughout its 43,700 square-mile territory to replace older natural gas facilities and equipment.

### NEED MORE INFORMATION OR HAVE COMMENTS?



[EDWARDSVILLEGASPROJECT@AMEREN.COM](mailto:EDWARDSVILLEGASPROJECT@AMEREN.COM)



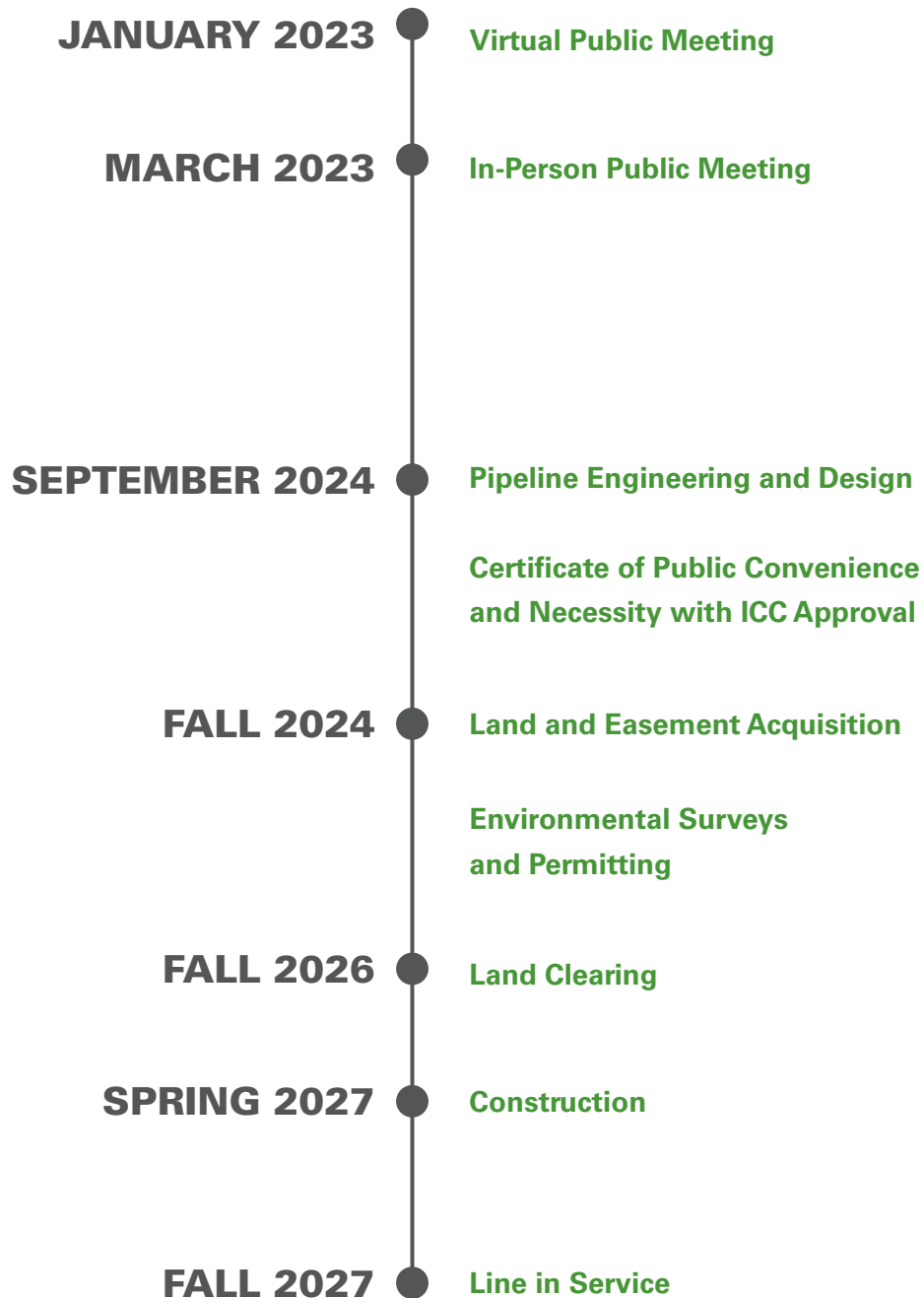
[AmerenIllinois.com/EdwardsvilleGasProject](https://AmerenIllinois.com/EdwardsvilleGasProject)



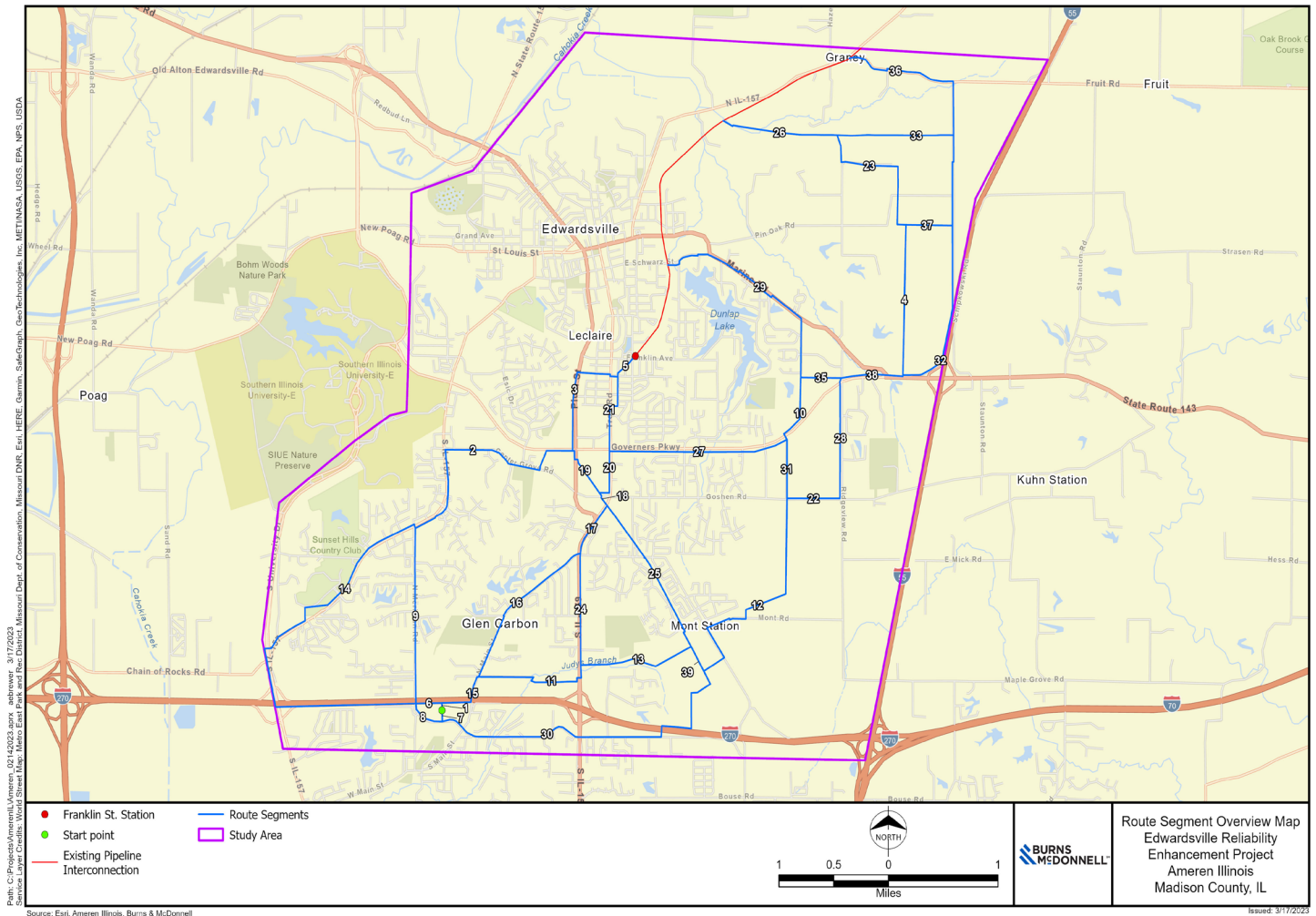
PROJECT HOTLINE: 618-221-0379



# PROJECT TIMELINE



# PROJECT STUDY AREA



## PROJECT BACKGROUND

To meet the needs of our customers while strengthening the safety, integrity and reliability of our region's natural gas system, in 2027, Ameren Illinois plans to construct an energy project that will modernize natural gas delivery in the greater Edwardsville area.

Ameren Illinois is evaluating the opportunity to repurpose the existing below ground and above ground facilities. Ameren Illinois may re-utilize and repurpose some existing infrastructure south of where Ameren Illinois pipeline crosses I-270 and ends at the Franklin St. Station located at the intersection of Franklin Ave. and Madison Ave. Ameren Illinois will also propose a route for, and design and construct, a new gas transmission pipeline. The final length of the Project will be determined based upon the routing study and selection of a final preferred route.

## ROUTING PROCESS

How is public input used throughout the routing process?

Information gathered from the public provides the Project team with valuable insight regarding properties, constraints and opportunities, and potential impacts to landowners. We are appreciative of all landowners for their participation throughout this process.

## ROUTING CRITERIA

Throughout the routing process, public input will be combined with the following considerations to determine the most appropriate and responsible pipeline route to propose to the Illinois Commerce Commission:

- ▶ Residences/Homes
- ▶ Federal and State Lands
- ▶ Schools
- ▶ Businesses
- ▶ Floodplains
- ▶ Existing Structures
- ▶ Cemeteries
- ▶ Visibility of Above Ground Facilities
- ▶ Highways
- ▶ Threatened and Endangered Species
- ▶ Churches
- ▶ Historic and Archaeological Sites
- ▶ Wetlands/Waterways
- ▶ Conservation Areas
- ▶ Irrigation Systems/Center Pivots
- ▶ Wooded Areas
- ▶ Land Suitability for Construction
- ▶ Cost
- ▶ New and Platted Developments
- ▶ Railroads
- ▶ Existing/Planned Utilities

## REGULATORY REVIEW

Ameren Illinois is regulated by the Illinois Commerce Commission (ICC). The ICC's regulatory review process includes public comments and participation. Ameren Illinois is allowed to proceed with the project only after the ICC approves the project and determines the final route.

## REAL ESTATE

If the approved path of the natural gas pipeline crosses your property, Ameren Illinois representatives will meet with you to discuss the following:

- ▶ Property Overview & Property Survey Access
- ▶ Easement Needs & Damage Compensation
- ▶ Construction Process & Construction Access
- ▶ Easement Negotiations & Land Restoration

## EASEMENTS

An easement is an interest or right to use the land of another for a specific purpose. Easements will be sought for construction, operation and maintenance of the project. Landowners who enter into an easement with Ameren Illinois will still own their own property.

