

Hello!

The Logan County Connector Public Webex Meeting will begin shortly.

Please call 217.213.3268 if you have issues hearing any audio or seeing the screen.

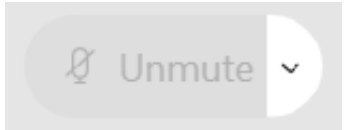
Welcome to the Logan County Connector Public Webex Meeting

February 23 at 6:00 p.m.
or
February 24 at 12:30 p.m.

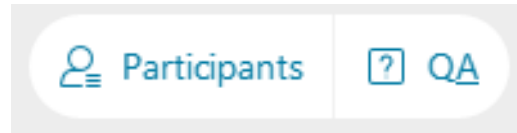
This meeting is being recorded for internal project team input



Welcome to Webex



You are muted and your video is disabled upon entry.

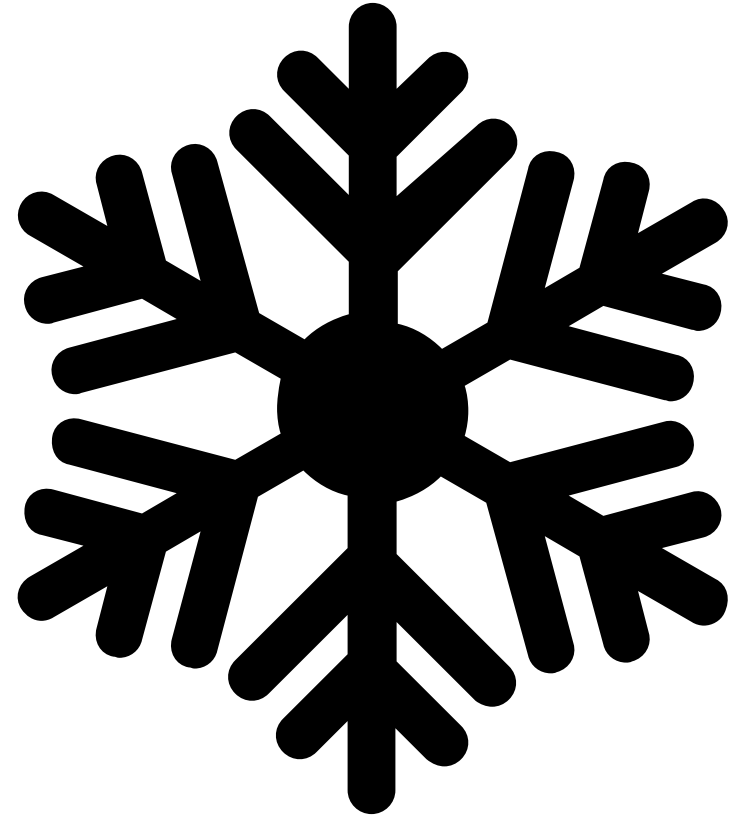


Please use the Q&A (lower right hand corner of the screen) to type in comments or questions throughout the session. Questions will be answered after the presentation during the Q & A session.



You can also use the hand icon to indicate to the project team that you would like to give your comment verbally during the Q & A session.

Safety Moment



Engagement Opportunities

Due to COVID-19, we are taking action to keep you and our staff safe and healthy. Ameren has indefinitely postponed all in-person public meetings and events. Public engagement remains a top priority for our project team and we appreciate you joining us online to learn more about this project and provide input on the project.



Online open house available anytime from **February 15 – March 5** on our project website.



Review the Route Segments and give your input on our online comment map.



Pick up a packet of project information at Lincoln City Hall located at 700 Broadway Street, Monday-Friday between 9am-5pm.



Request a mailed or emailed project information packet by emailing us or leaving a message on our hotline with your preferred address.



Contact the project team by leaving a message on our project hotline at 217.213.3268 and our project team will call you back or by email at Connect@LoganCountyConnector.com.

Agenda



SAFETY MOMENT



ENGAGEMENT
OPPORTUNITIES



PROJECT TEAM
INTRODUCTIONS



Q&A



PRESENTATION



WRAP-UP AND NEXT STEPS

Presenters



Ajay Jayaprakash
Ameren Project Manager



Gabe Goldsmith
Ameren Stakeholder Relations



Dan Schmidt
Routing Consultant

Ameren Support Project Staff



Ellen Prinster
Design Engineering



Joe Robertson
Construction



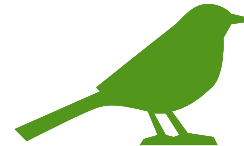
Francisco Ponce
Transmission Planning



Jim Morrison
Vegetation Management



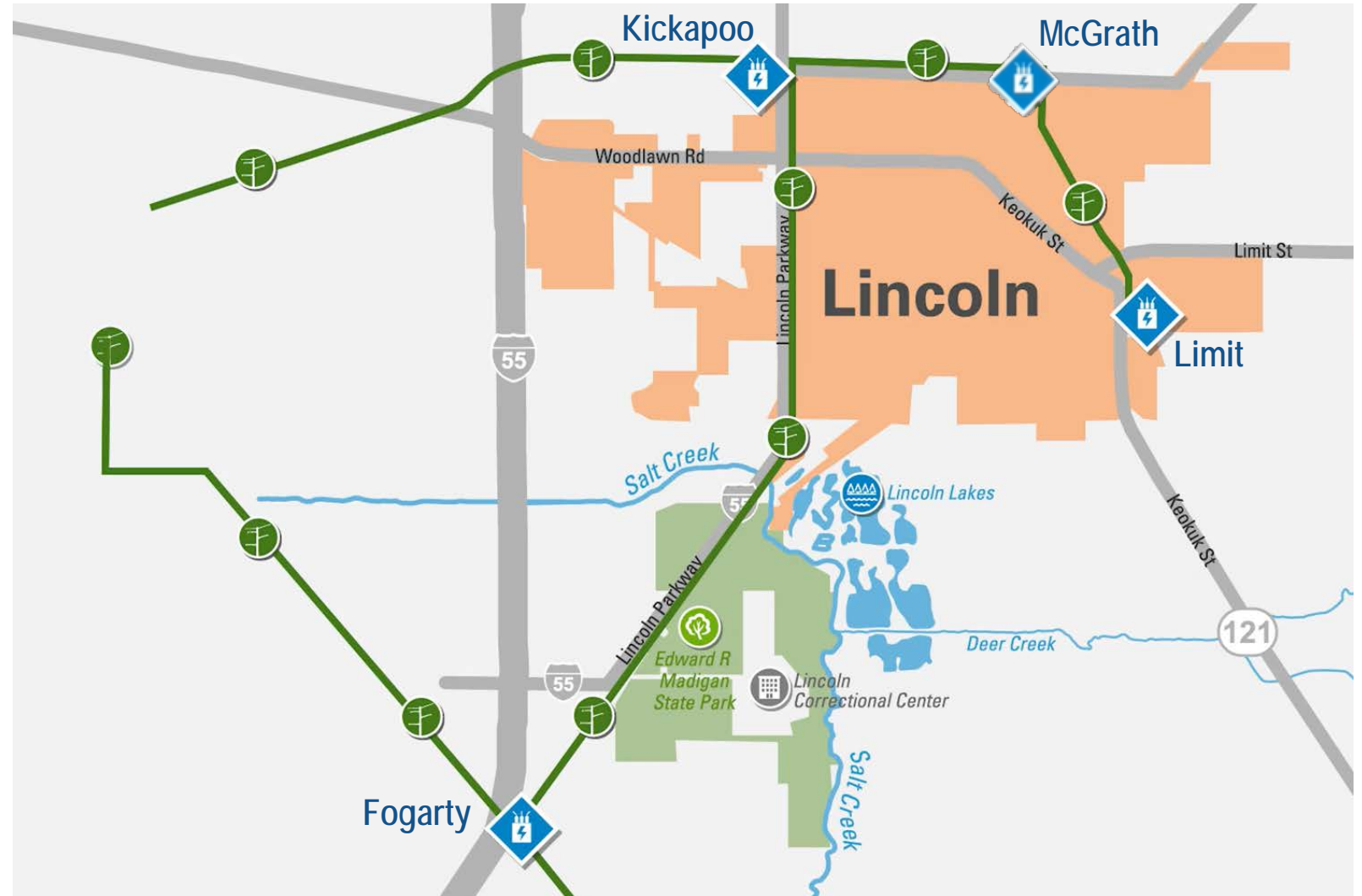
Rick Trelz
Real Estate



Kenny Lynn
Environmental

Project Need

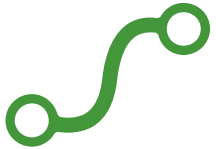
- Communities in this area are currently supported by **two** Ameren Illinois 138 kV transmission lines
- Creating additional energy pathways to improve reliability



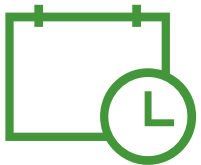
Logan County Connector



Ameren Illinois is proposing to construct a new, approximately 6 to 10-mile 138 kV transmission line and associated facilities.

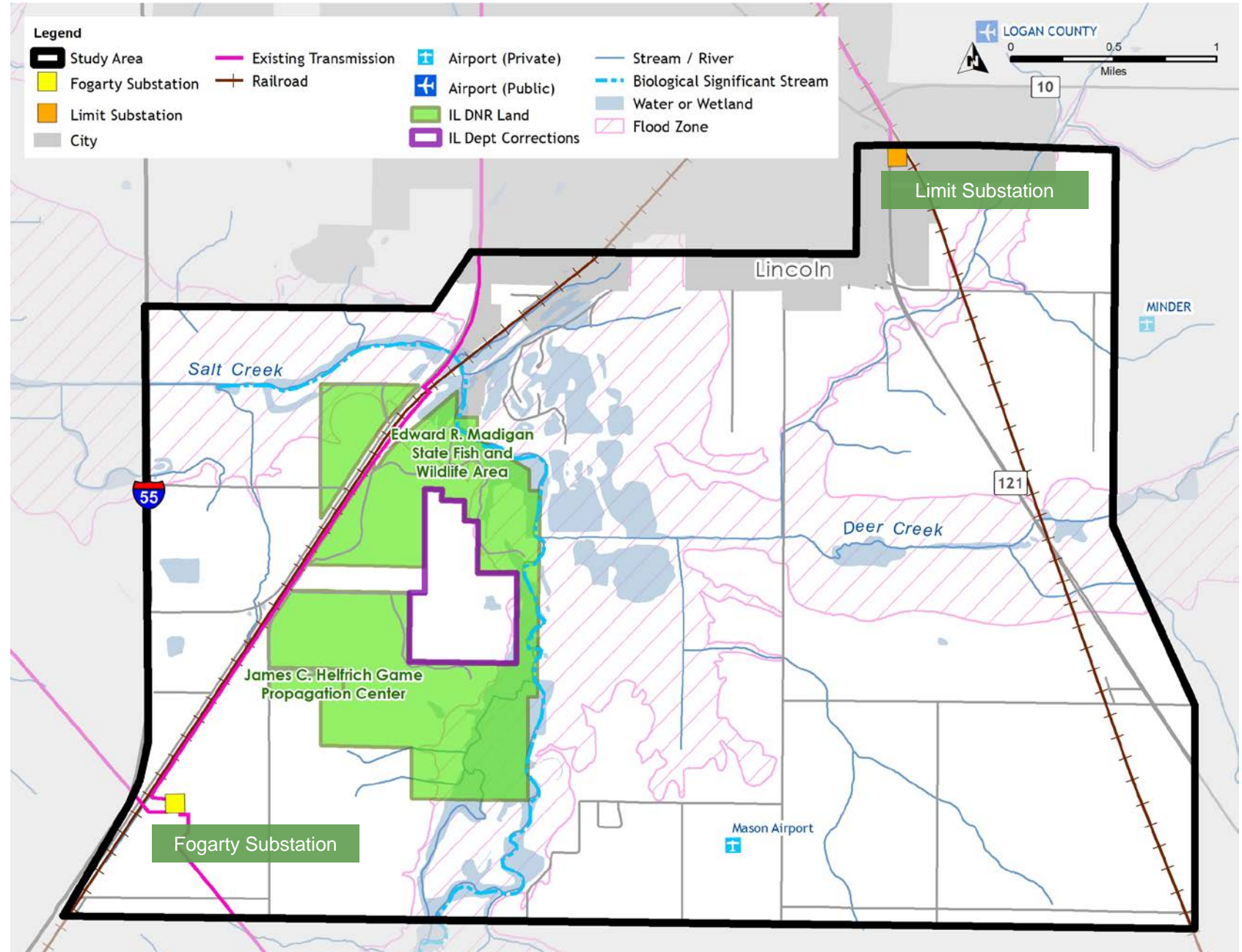


The new line will **improve energy reliability** for local customers in Lincoln and the surrounding Logan County area.



Our goal is to have this project completed and bringing project benefits to the local community **by the end of 2023.**

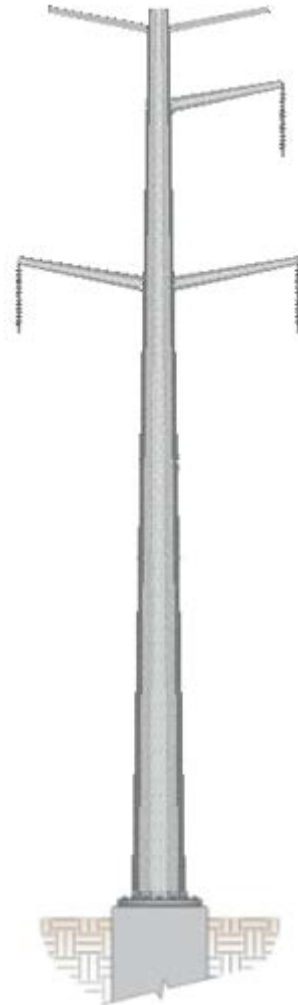
Study Area



Structures

? Benefits of galvanized steel monopoles:




- Compact footprint compared to H-frame and lattice tower
- Simple and quick construction
- Galvanized layer protects steel from corrosion
- Engineered to optimize performance



Typical 138kV Steel Monopole Structures*

- Height: 80 - 120 ft
- Span: 700 - 800 ft
- Structures/mile: 7 - 8
- Conductor clearance: 21 ft (minimum)
- Drilled concrete pier foundation: 6 - 10 ft diameter
- Easement width: 100 ft
- Above-ground foundation: 2 ft

Anticipated Schedule

 2021	 2022	 2023
<ul style="list-style-type: none">• Gather public and agency input• Engineering and permitting• Final route(s) identified• File route(s) with ICC	<ul style="list-style-type: none">• Certificate of Public Convenience & Necessity (CPCN) Decision• Environmental surveys and permitting• Easement acquisition process	<ul style="list-style-type: none">• Preconstruction activities• Construction• Project in service (December)

**All items shown are pending regulatory approvals. Schedule is subject to change.*

Routing Process & Stakeholder Outreach

Gather and
Review Data
Ongoing

Route
Segments

Analyze and Identify
Final Route (s)



Study Area

Route
Alternatives

File Route (s)
with ICC

Routing Criteria

Opportunities



Sensitivities



Technical Guidelines



Statutory Requirements



Our goal is to take advantage of Opportunities while understanding and minimizing impacts to Sensitivities and adhering to Technical Guidelines and Statutory Requirements.

Routing Criteria

OPPORTUNITIES



Linear features that are oriented in the direction of the project:

- Field lines
- Property lines
- Section lines
- Roads
- Utility corridors

SENSITIVITIES



Area resources or conditions that can potentially limit transmission line development:

- Agricultural conflicts
- Airports/VOR
- Cemeteries
- Communication Towers
- Conservation Areas/Nature Preserves
- Cultural Resources
- Planned Development (future)
- Floodplains (more difficult construction and many times have sensitive species)
- Forest
- Hospitals
- Levees
- Large Housing Facilities (i.e. Correctional Facility)
- Mines/Quarries
- Pipelines*
- Railroads*
- Religious Facilities
- Residences (especially large clusters of homes)
- Scenic Highway
- Schools/Daycares
- Streams/Wetlands
- Wells

*Linear features with additional precautions and studies needed

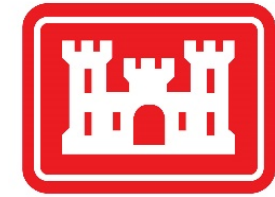
Routing Criteria

Technical Guidelines:

- Minimize length
- Ensure adequate access for construction and maintenance activities
- Comply with horizontal and vertical clearance requirements
- Maintain required or sufficient setbacks from roads and highways
- Minimize angle structures
- Minimize crossing of existing transmission lines
- Minimize impractical construction requirements (e.g. steep slopes)
- Minimize non-standard designs
- Ensure safety and compatibility with existing infrastructure

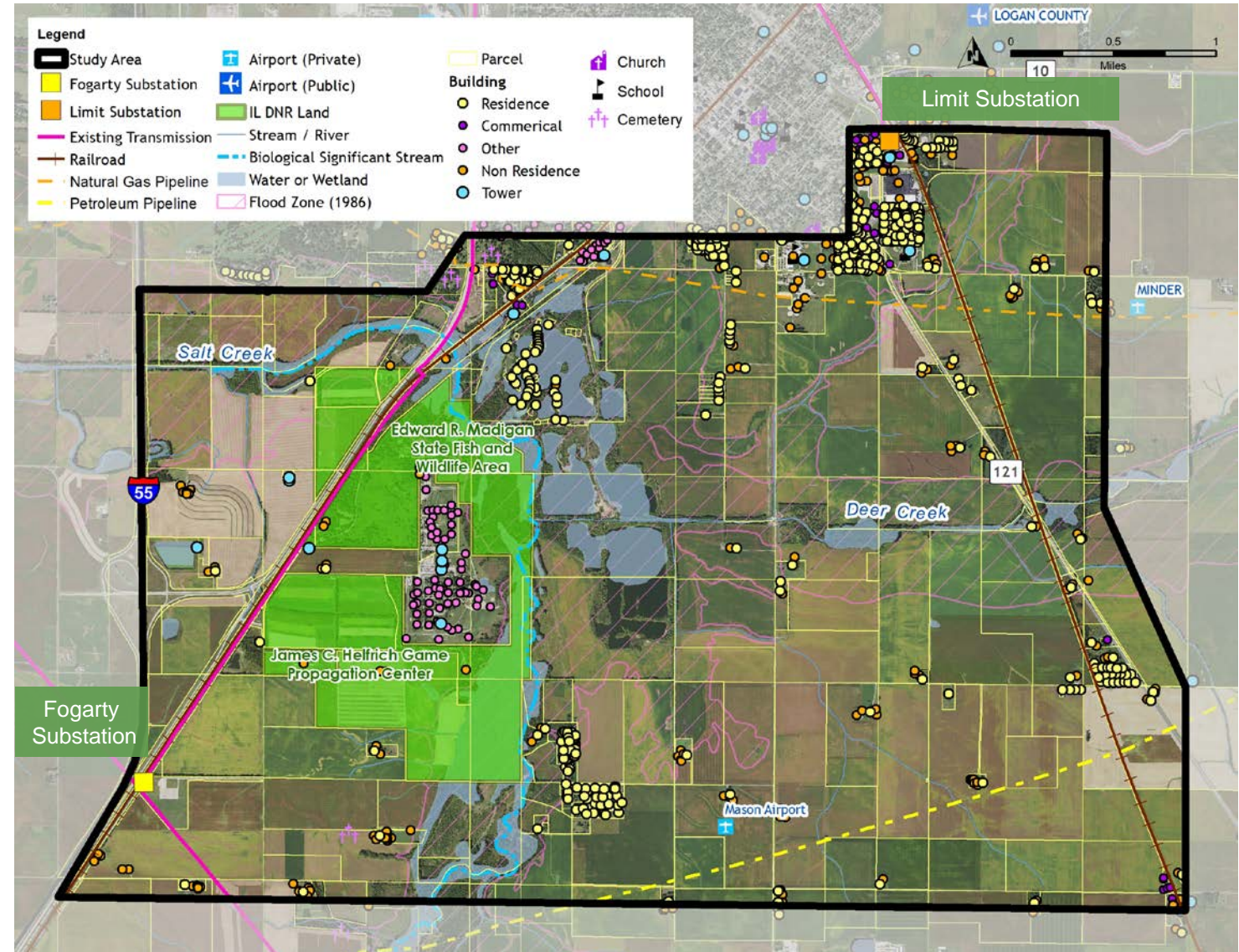
Routing Criteria

Agency Coordination:



Initial Opportunities & Sensitivities

- Structures
- Resource Areas
- Floodplain/Wetlands
- Existing Infrastructure



Real Estate

Once a final route has been approved, Ameren Illinois will begin negotiations for acquiring easements.

Easement Discussions

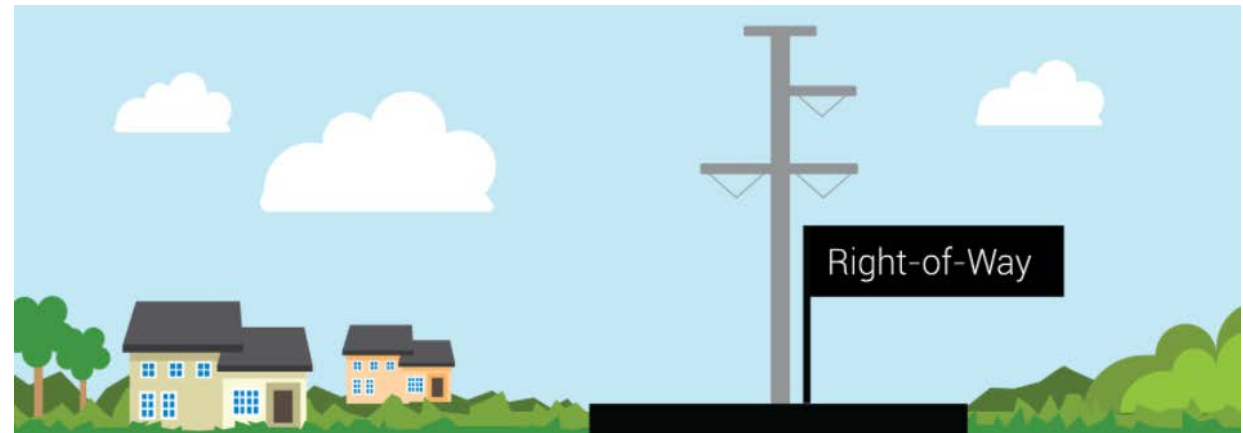
Project representatives will meet with affected landowners to discuss:

- Land surveys and studies
- Proposed easement
- Type(s) of structures
- Compensation
- Property restoration
- Damage settlements
- Right-of-way clearing



What is an easement?

An easement is an interest or right to use the land of another for a specific purpose. Ameren Illinois and our partners will be seeking to obtain easements from affected landowners for the construction, operation and maintenance of the electric transmission line.



Preconstruction Activities



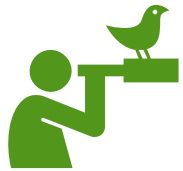
Field Surveys

The field data we collect allows our scientists and engineers to plan and design the line with the information necessary for construction.



Archaeological Surveys

Archaeological surveys consist of walking the easement area to look for cultural artifacts on the ground. If artifacts are found, they are collected for further analysis.



Wildlife Surveys

Wildlife surveys provide important data about the species living in the area, helping us plan how to minimize impacts to wildlife species and habitat.



Soil Surveys

The design process requires information about the soil where the structure will be located. Collecting soil information is completed using the following steps by our geotechnical field survey crews:

- Gather samples from each site by digging a 4-6 inch wide hole into the ground, known as a soil boring. Soil boring areas will be filled back in after the survey.
- Review samples to determine the physical properties and layering of the soil.
- Use soil information to design each structure.



Wetland and Stream Surveys

The purpose of the surveys is to determine if these features can be classified as a wetland or a stream based on U.S. Army Corps of Engineers guidelines. The crew will collect data on vegetation, hydrology and soil characteristics.

Construction Process

Construction is anticipated for 2023. There will be six major stages of construction including:



Survey structure locations



Auger holes and pour foundation



Assemble structure on the ground



Lift and place structure on foundation



String wires



Restore easement and energize line

Engagement Opportunity: Online Open House

The screenshot displays the 'Logan County Connector Online Open House' interface. At the top left is the Ameren Illinois logo. Below it is a vertical navigation menu with icons and labels: WELCOME, Additional Engagement Opportunities, Project Overview, Project Schedule, Structure Design, Routing Process & Stakeholder Outreach, Routing Process, Agency Coordination, and Input Opportunity! Routing Sensitivities. Below the menu is a 'Translate This Site' section with a 'Select Language' dropdown. The main content area is titled 'WELCOME' and includes a paragraph of text: 'Thank you for your participation in our online engagement! The slides in this session are filled with information about Logan County Connector. Please read the materials, submit responses to the survey questions and share valuable input with us through our interactive comment map.' Below this is a horizontal row of six icons: a lightbulb, a battery, solar panels, a cell tower, a smartphone, and a circular icon with a lightning bolt and the word 'COMMENT'. To the right of the icons is a 'COMMENT' button with an envelope icon. Below the icons are two sections: 'How to NAVIGATE' and 'How to COMMENT'. The 'How to NAVIGATE' section explains how to use arrows and a navigation bar. The 'How to COMMENT' section explains how to provide a comment and submit it. At the bottom of the main content area is a disclaimer: 'To prevent the further spread of COVID-19, Ameren has indefinitely postponed all public meetings and in-person events. Public engagement remains a top priority for our project team and we appreciate you joining us online to learn more about this project. Our team has engagement opportunities tentatively scheduled for later this fall, pending the status of COVID-19 restrictions.'

Logan County Connector Online Open House

WELCOME

Thank you for your participation in our online engagement! The slides in this session are filled with information about Logan County Connector. Please read the materials, submit responses to the survey questions and share valuable input with us through our interactive comment map.

How to NAVIGATE

Click the arrows on the right of your screen to go forward or the left to go backward. Use the navigation bar on the top or along the right side of your screen to revisit any part of the meeting.

How to COMMENT

Provide a comment at any point by clicking the "Comment" button at the top right of your screen. Once finished, please make sure to hit "Submit" to confirm that your comment is sent to the project team. Close the form to continue through the slides.

To prevent the further spread of COVID-19, Ameren has indefinitely postponed all public meetings and in-person events. Public engagement remains a top priority for our project team and we appreciate you joining us online to learn more about this project. Our team has engagement opportunities tentatively scheduled for later this fall, pending the status of COVID-19 restrictions.

Engagement Opportunity: Online Comment Map



Stay Connected

LOGAN COUNTY CONNECTOR PROJECT

Ameren Illinois is proposing to construct a new, approximately 6 to 10-mile 138 kV transmission line and associated facilities to improve energy reliability for local customers in Lincoln and the surrounding Logan County area. These communities are currently supported by **two** Ameren Illinois 138 kV transmission lines that protect and secure the energy system in Logan County. In the future, continuing to rely on these transmission sources in the event of a power outage could result in extended restoration times and community-wide impacts. **As we continue to serve, support and invest in our communities, new projects—like the Logan County Connector—allow us to continue supporting future energy needs.**

📍 We are collecting information about the Study Area

Add a comment to provide our team information about your area. For best results, view map in Chrome, Firefox, or Edge.



Visit the project website to provide input on the online comment map: LoganCountyConnector.com

Engagement Opportunities



Online open house available anytime from **February 15 – March 5** on our project website.



Review the Route Segments and give your input on our online comment map.



Pick up a packet of project information at Lincoln City Hall located at 700 Broadway Street, Monday-Friday between 9am-5pm.




Request a mailed or emailed project information packet by emailing us or leaving a message on our hotline with your preferred address.



Contact the project team by leaving a message on our project hotline at 217.213.3268 and our project team will call you back or by email at Connect@LoganCountyConnector.com.

More Opportunities to Connect

 Connect@LoganCountyConnector.com

 217.213.3268

 www.LoganCountyConnector.com

 400 N. Limit Street, Lincoln, IL 62656

QUESTIONS?





**COMMENTS ON THE ROUTE
SEGMENTS WILL BE
COLLECTED THROUGH MARCH 5**

Wrap Up



December 2020 – January 2021
Study Area

- Formation of the Routing Team
- Development of Routing Criteria and identification of Project parameters
- Identification of Study Area
- Review of publicly available information
- Online Stakeholder Workshops (January 26 and January 27)



★ February – April 2021
Route Segments

- Evaluation of Stakeholder input
- Development of Route Segments
- Phase 1 Public Engagement – present Route Segments (we are here!)



April – May 2021
Route Alternatives

- Evaluate input received from first phase of public engagement
- Development of Route Alternatives
- Phase 2 Public Engagement – present Route Alternatives (Spring 2021)



Late Spring 2021
Identify, Analyze, and Select Final Route(s)

- Evaluate input received from second phase of public engagement
- Develop final route(s)



June 2021
File Route(s) with Illinois Commerce Commission

- Once the regulatory documents are submitted, an official review process begins.



LEAVE US A NOTE IN THE
Q&A BOX TO SCHEDULE A
FOLLOW-UP MEETING WITH A
PROJECT TEAM MEMBER.



@ Connect@LoganCountyConnector.com

 217.213.3268

 LoganCountyConnector.com

THANK YOU