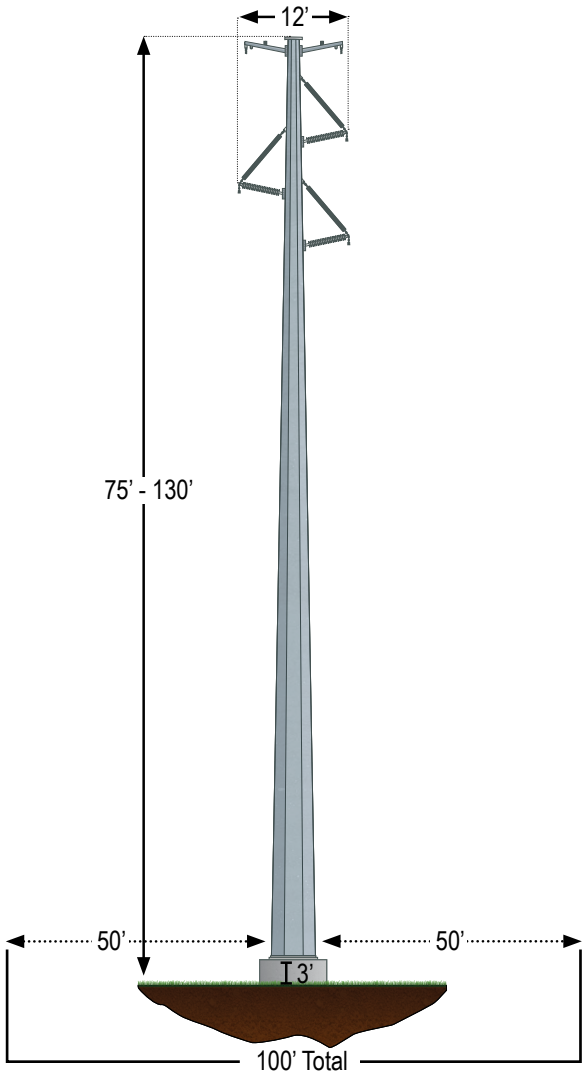




STRUCTURE DESIGN AND EASEMENT

Voltage	138,000 volts
Structure Type	Single-shaft steel poles
Height Range	75 – 130 feet tall (typical)
Foundation	Concrete pier
Foundation Diameter	6 – 10 feet (typical)
Span Length	700 - 800 feet (average)
Structures per Mile	7 – 8 (average)
Conductor Clearance	21 feet (minimum)
Line Easement Width	100 feet

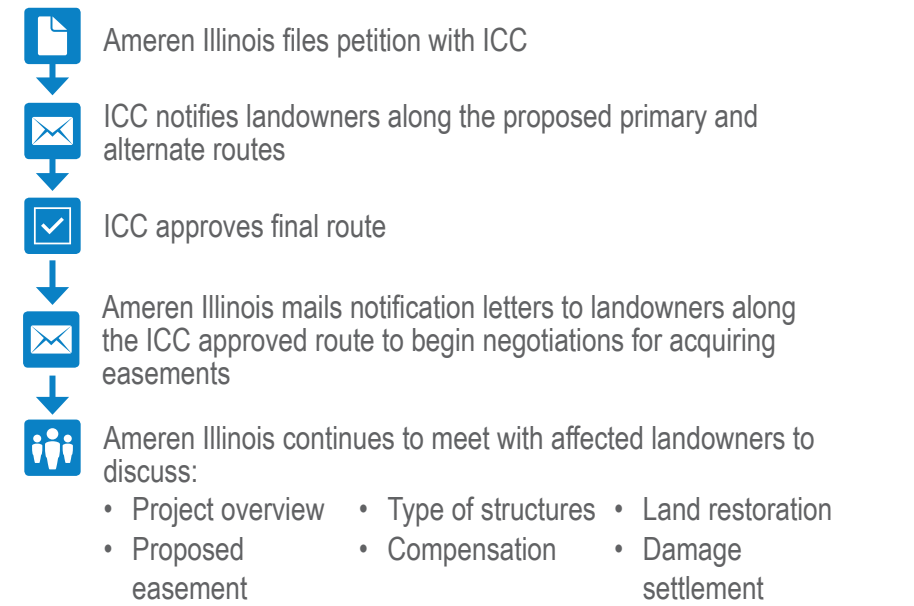


EASEMENT ACQUISITION PROCESS

**What is an easement?**

An easement is an interest or right to use the land of another for a specific purpose. For this project, landowners will be requested to grant an easement to Ameren for the right to use a defined strip of land for electric transmission line:

- construction
- operation
- maintenance



MCLEAN COUNTY RELIABILITY PROJECT

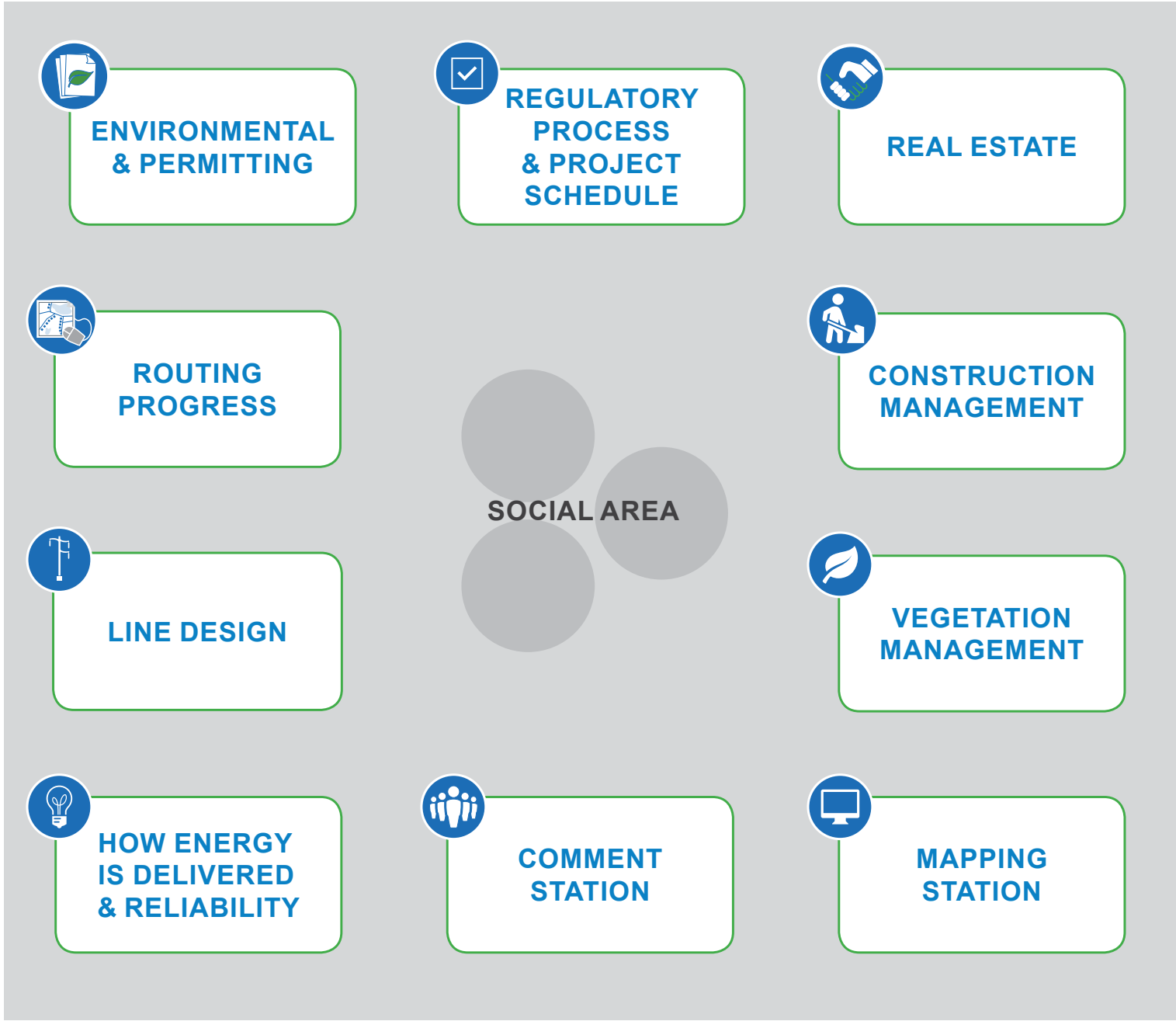
PROJECT OVERVIEW

Ameren Illinois proposes to construct a new, approximately 10-mile 138,000-volt transmission line and associated facilities to improve energy reliability to local customers. The new line will connect the existing McLean County Substation and the upgraded Normal East Substation located near Normal, Illinois. The new line and associated facilities are needed for Ameren Illinois to improve energy reliability and to support continued growth in the area. The project is proposed to be in service by December 2020.


BENEFITS


-  Improves local energy reliability
-  Supports expansion needed for continued area growth


VISIT PROJECT REPRESENTATIVES AT THE FOLLOWING STATIONS:



NEED MORE INFORMATION OR TO SUBMIT INPUT? CONTACT US AT:

 [mcleancountyreliabilityproject.com](http://mcleancountyreliabilityproject.com)

 [mcleancountyreliabilityproject@ameren.com](mailto:mcleancountyreliabilityproject@ameren.com)

 309.319.7186

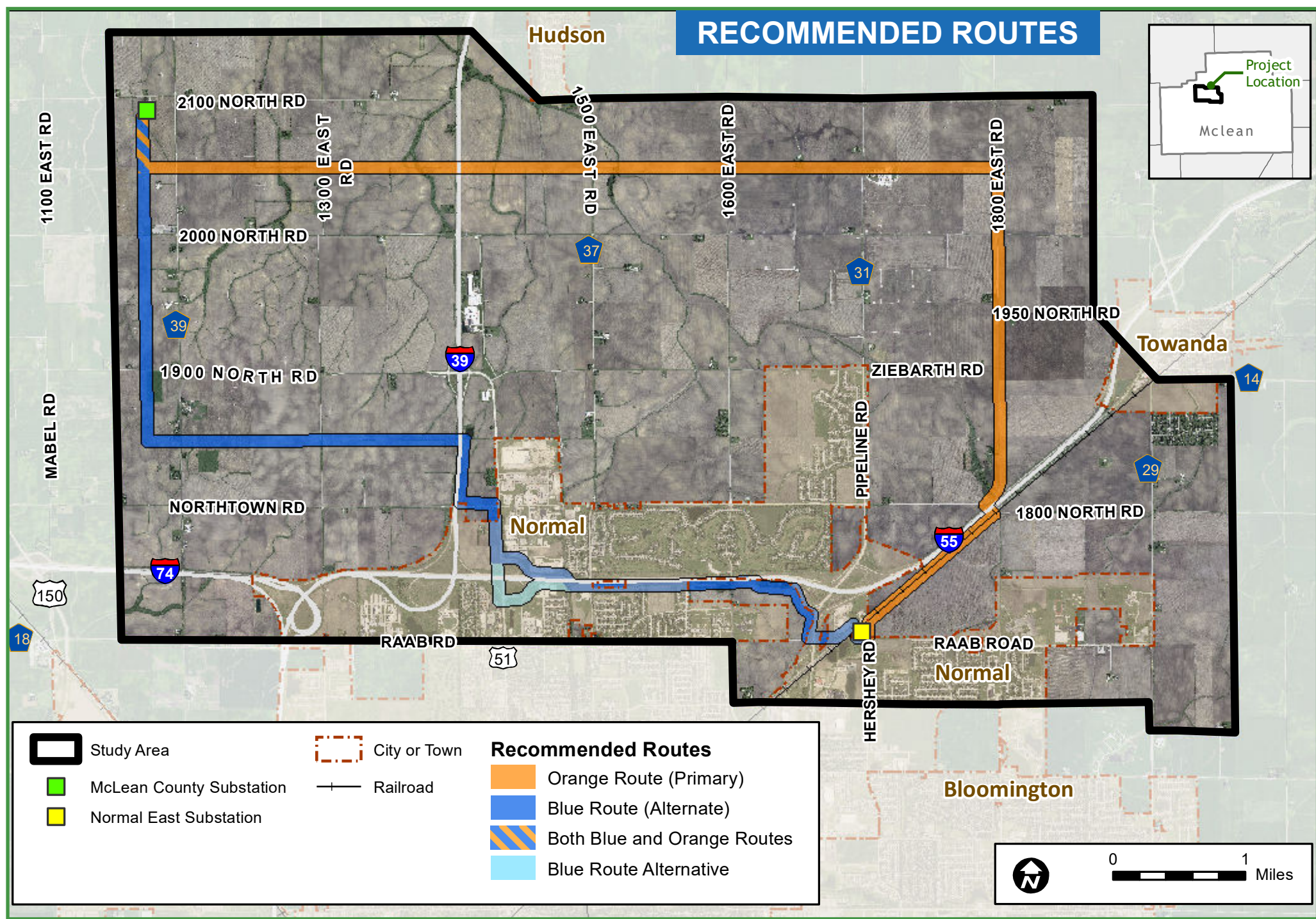
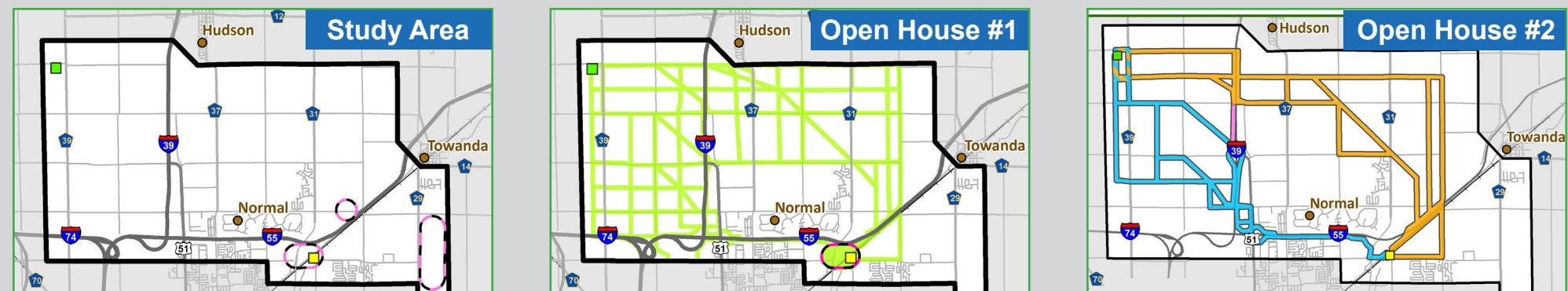
McLean County Reliability Project • 370 S. Main St. • Decatur, IL 62523

 Be sure to sign-in and join the mailing list.

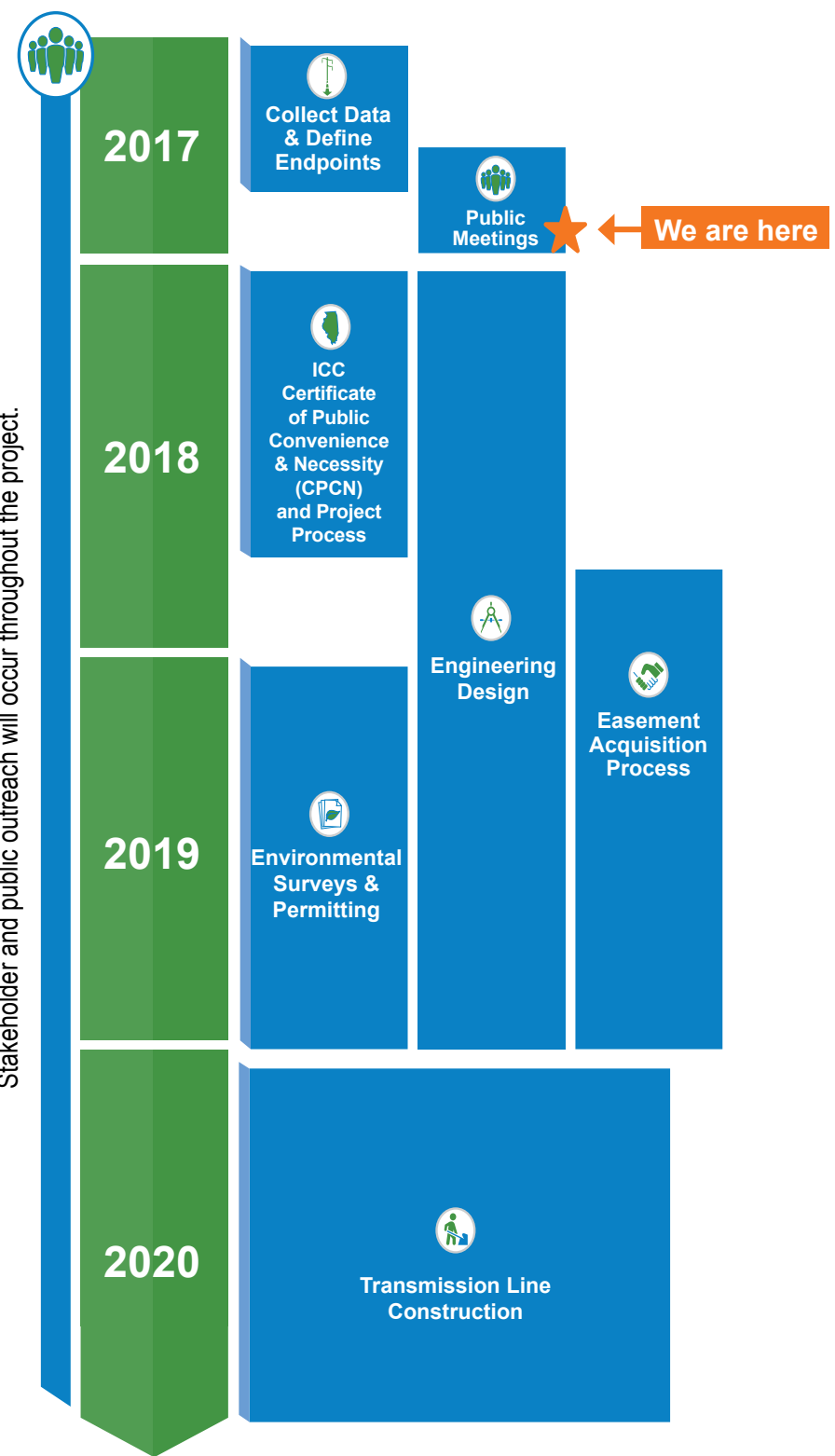




# Routing Progress



## PROJECT SCHEDULE\*



\*All items shown are pending regulatory approvals. Schedule is subject to change.