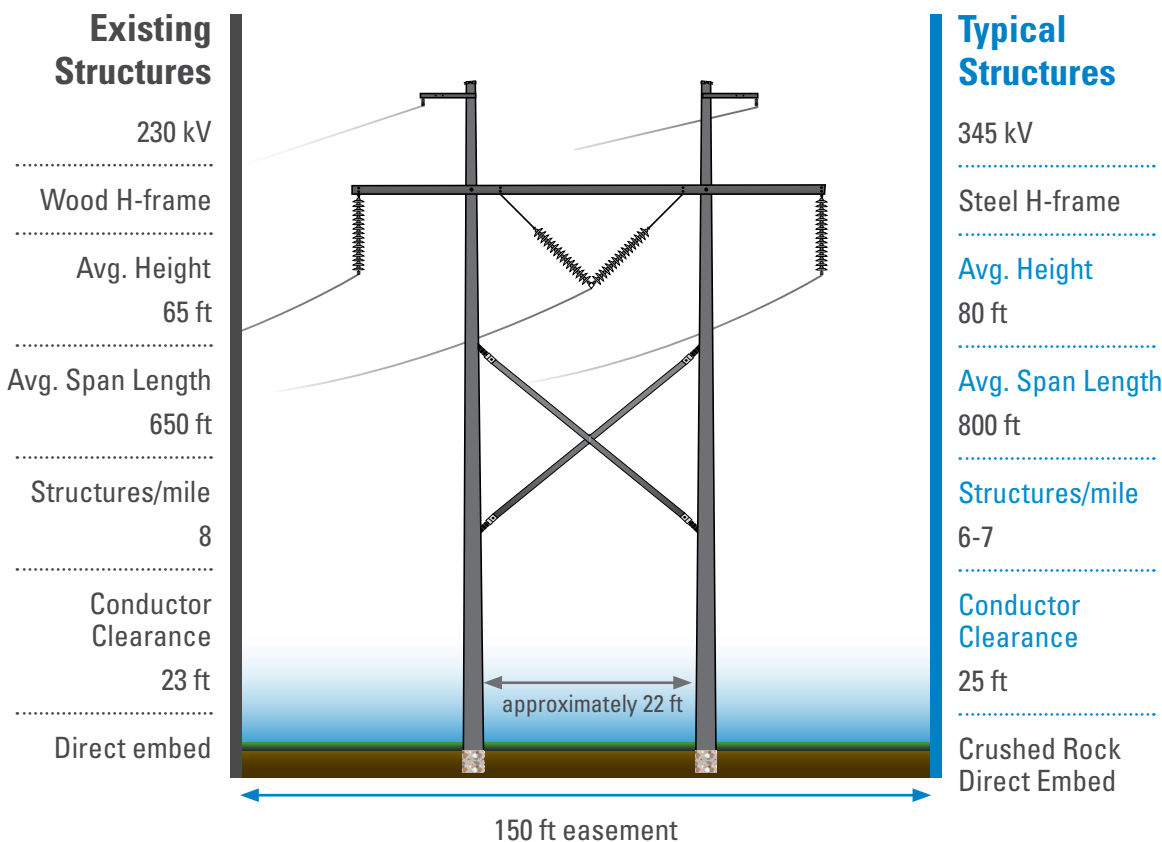


Segment 2: Prairie State to Aster

Washington & Perry counties

Ameren Illinois is replacing and upgrading an existing 230 kV transmission line and associated facilities from Cahokia to Joppa.

The existing line was originally built in the 1950's, and will be replaced and upgraded to a 345 kV line to better align with Ameren Illinois' current energy system and to create additional customer benefits. Replacing the aging infrastructure and upgrading this transmission line will improve energy reliability, promote access to renewable energy like solar, and increase transmission capacity. Construction will occur in six project segments along the existing transmission corridor.



Project Benefits



Replacing aging infrastructure and upgrading our energy system to improve reliability



Promoting access to renewable energy sources like solar



Increasing transmission capacity

Segment 2: Prairie State to Aster



Construction Activities & What to Expect

ROW & Field Surveys



Spring - Fall 2019

Soil borings and environmental and cultural field surveys help to identify pole locations, historical and archaeological resources, wildlife habitat, native prairie, wetlands and streams.

Pre-Construction



Fall 2020 - Winter 2021

Prior to construction, crews will clear the right-of-way of debris, and vegetation.

Pole locations will be flagged for construction.

Materials will be staged in areas along the route.

Construction



Spring 2021

During construction, crews will dig holes, set and place poles and string wires.

You may notice large equipment working along roadways and along our right-of-way.

Restoration



Spring - Summer 2021

Once construction is nearly complete, crews will clean up project work areas and begin restoration of the right-of-way, access roads and material yards.



SouthernILReliability.com



SouthernILReliability@ameren.com



618.808.3093

Copyright © 2020