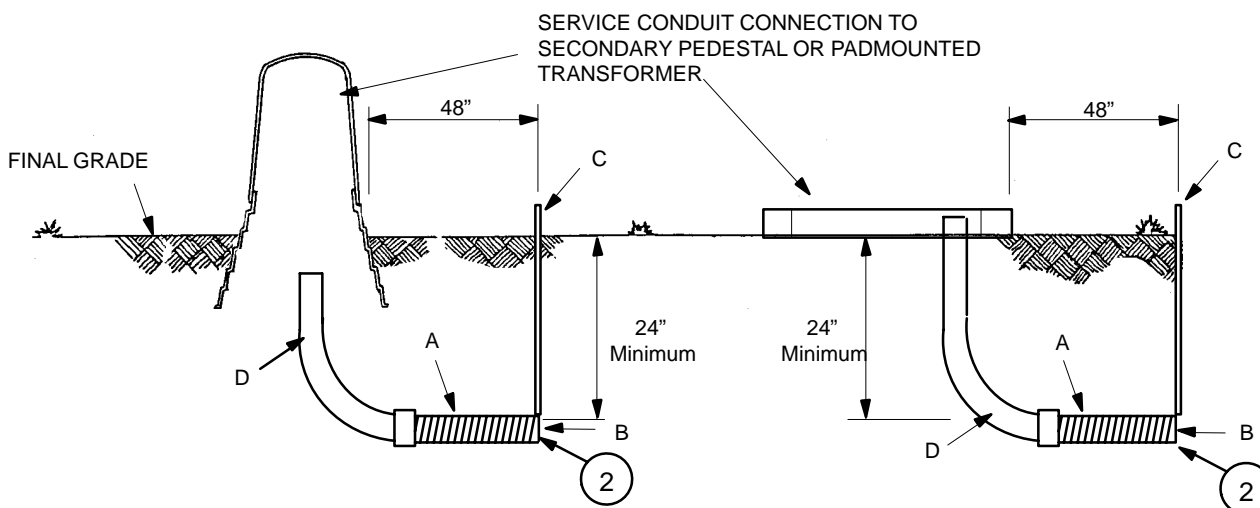


**UNDERGROUND LINES INSTRUCTION**  
**Service Conduit Connection**  
**To Pedestal or Transformer**

**SPEC 10**  
 Sheet 1 of 1



**NOTES:**

1. Flexible conduit shall point in the direction of the service. The conduit will extend 48" beyond the edge of the pedestal and/or transformer. \*\*
2. The flex conduit end of the contractor installed conduit shall be sealed and marked with buried conduit marker (C). Marker should be attached to flex conduit end.
3. Seal conduits in pedestal and transformer pad with duct tape and mark on tape with permanent marker as follows: S= Secondary, ST= Streetlight, and service conduits marked with lot number.

\*\* Flex conduit will be gray in color and have dimensions that allow the use of standard Sch 40 fittings and accessories.

**MATERIAL INSTALLED BY CONTRACTOR**

( DERIVED FROM CONSTRUCTION STANDARD 34 21 03 00 AND 59 81 40 \*\* )

	Material Stock No.	Description	Service Size	
			0-200 Amp	201 thru 400 Amp
A	12 51 267	Conduit – Plastic, Flexible, 2-1/2", Corrugated	4'	
	12 51 239	Conduit – Plastic, Flexible, 3", Corrugated		4'
B	12 51 007	Plug – Conduit, 2 1/2"	1	
	12 51 002	Plug – Conduit, 3"		1
C	49 55 520	Marker – Buried Conduit, Red Plastic	1	1
D	12 51 264	Bend – Plastic, 2 1/2", 24" Rad	1	
	12 51 173	Bend – Plastic, 3", 36" Rad.		1
			<b>Quantity</b>	