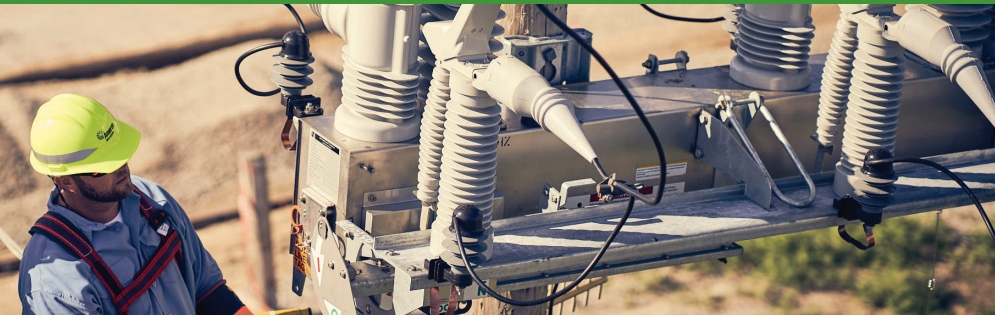


Smart Energy Plan

Pershall Project



POWERING A SMARTER FUTURE

We know you depend on reliable energy, now more than ever. That's why we are building infrastructure for today and the future. Our crews are upgrading power lines and equipment in your area. And we are installing smart technology for fewer outages and a faster restoration response when service disruptions happen. We call it the Smart Energy Plan.

One of our Smart Energy Plan projects is the Pershall Project. This project will bring more reliable energy to families and businesses in the Florissant, Hazelwood and Berkeley communities. We will be building a new, state-of-the-art substation – which is the engine that keeps energy flowing in your community – and we're upgrading to stronger utility poles to withstand powerful Missouri storms. **As part of this smart energy upgrade, you will experience a few short, planned power outages.** You'll hear from us before any planned outage and we will keep you informed every step of the way.



BENEFITS



More reliable energy



Fewer outages



Faster power restoration

New, state-of-the-art equipment will:

- Meet growing energy needs, long into the future
- Require fewer repairs and maintenance, saving you money
- Include smart sensors and switches to rapidly detect and isolate damage






To learn more about the Pershall Project, visit the project webpage
AmerenMissouri.com/PershallProject



PERSHALL PROJECT SCHEDULE

CONSTRUCTION

Construction for the Pershall Project will include:

-  Installing new storm-resistant poles and smart technology
-  Replacing some of our equipment near your home or business
-  Switching homes and businesses over to a new substation

An Ameren Missouri contractor will notify you in person – from a safe social distance – with a knock on your door 24-48 hours in advance of any work on or near your property. If you are not home when we stop by, we'll leave a door hanger on your door with the information you need.

You will always have safe access to your home or business, and we'll let you know when all upgrades are complete. If we do work on your property, we will ensure we leave it in the same condition as when we started the project.

PLANNED POWER OUTAGES

This project requires **a few short, planned power outages** so that our crews can install new equipment and make upgrades. We anticipate each planned outage may last **up to four hours**.

We understand that any power outage is an inconvenience, so we will communicate with you in advance so that your family or business has time to make arrangements during any planned outage. We will also give you a call or text alert before a planned power outage if you'd like – just sign up for alerts through your Ameren Missouri account or visit **Ameren.com/Alerts** to sign up today.

Don't have an online account? Go to AmerenMissouri.com and create one. It's fast, simple and free.

Ameren Missouri is investing in smart energy projects across the state through the Smart Energy Plan. The plan includes investments in clean and reliable energy, reduced power outages, and tools to help you manage your energy usage. The plan is all part of our mission to Power the Quality of Life for Missouri families and businesses, making our state an even better place to live and do business.

The current COVID-19 situation requires everyone to be more diligent in ensuring safety for all. As a reminder, Ameren Missouri is asking the public to maintain a safe social distance while crews are working nearby. The CDC recommends a safe distance of 6 feet. Working together, we can make a difference and help limit the spread of COVID-19.



Fall 2020

Trees trimmed in our
right-of-way to give
crews better access



January 2021

Construction begins



**Spring & Fall
2021/2022**

Planned power
outage windows



Late 2022

Project complete



Questions? We are happy to help.

Email us at SmartEnergyTeam@ameren.com or give us a call at **1.314.380.3087**.

